



# Government Gazette Staatskoerant

REPUBLIC OF SOUTH AFRICA  
REPUBLIEK VAN SUID AFRIKA

Vol. 694

21

April  
April

2023

No. 48450

N.B. The Government Printing Works will not be held responsible for the quality of "Hard Copies" or "Electronic Files" submitted for publication purposes

ISSN 1682-5845



**AIDS HELPLINE: 0800-0123-22 Prevention is the cure**

**IMPORTANT NOTICE:**

**THE GOVERNMENT PRINTING WORKS WILL NOT BE HELD RESPONSIBLE FOR ANY ERRORS THAT MIGHT OCCUR DUE TO THE SUBMISSION OF INCOMPLETE / INCORRECT / ILLEGIBLE COPY.**

**No FUTURE QUERIES WILL BE HANDLED IN CONNECTION WITH THE ABOVE.**

**Contents**

<i>No.</i>		<i>Gazette No.</i>	<i>Page No.</i>
<b>GOVERNMENT NOTICES • GOEWERMENTSKENNISGEWINGS</b>			
<b>Transport, Department of/ Vervoer, Departement van</b>			
3329	South African National Roads Agency Limited and the National Roads Act (7/1998): Declaration Amendment of National Road N2 Section 2: Amendment of Declaration No. 812 of 2021 .....	48450	3
3329	Suid-Afrikaanse Nasionale Padagentskap Beperk en Nasionale Paaie Wet (7/1998): Verklaring Wysiging van Nasionale Pad N2 Seksie 2: Wysiging van Verklaring No. 812 van 2021.....	48450	4

---

**GOVERNMENT NOTICES • GOEWERMENTSKENNISGEWINGS**

---

**DEPARTMENT OF TRANSPORT**

NO. 3329

21 April 2023

**THE SOUTH AFRICAN NATIONAL ROADS  
AGENCY SOC LIMITED**Registration No: 1998/009584/30

---

**DECLARATION AMENDMENT OF NATIONAL ROAD N2 SECTION 2**

AMENDMENT OF DECLARATION No. 812 OF 2021.

By virtue of section 40(1)(b) of the South African National Roads Agency Limited and the National Roads Act 1998 (Act No. 7 of 1998), I hereby amend Declaration No. 812 of 2021 by substituting sheets 27 and 47 with the accompanying sheets 27A and 47A of Plan No. P1110/18.

**(National Road N2 Section 2: Strand – Caledon)****MINISTER OF TRANSPORT**

## DEPARTEMENT VAN VERVOER

NO. 3329

21 April 2023

**DIE SUID-AFRIKAANSE NASIONALE  
PADAGENTSKAP MSB BEPERK**

Registrasie No: 1998/009584/30

Datum 23/01/2023

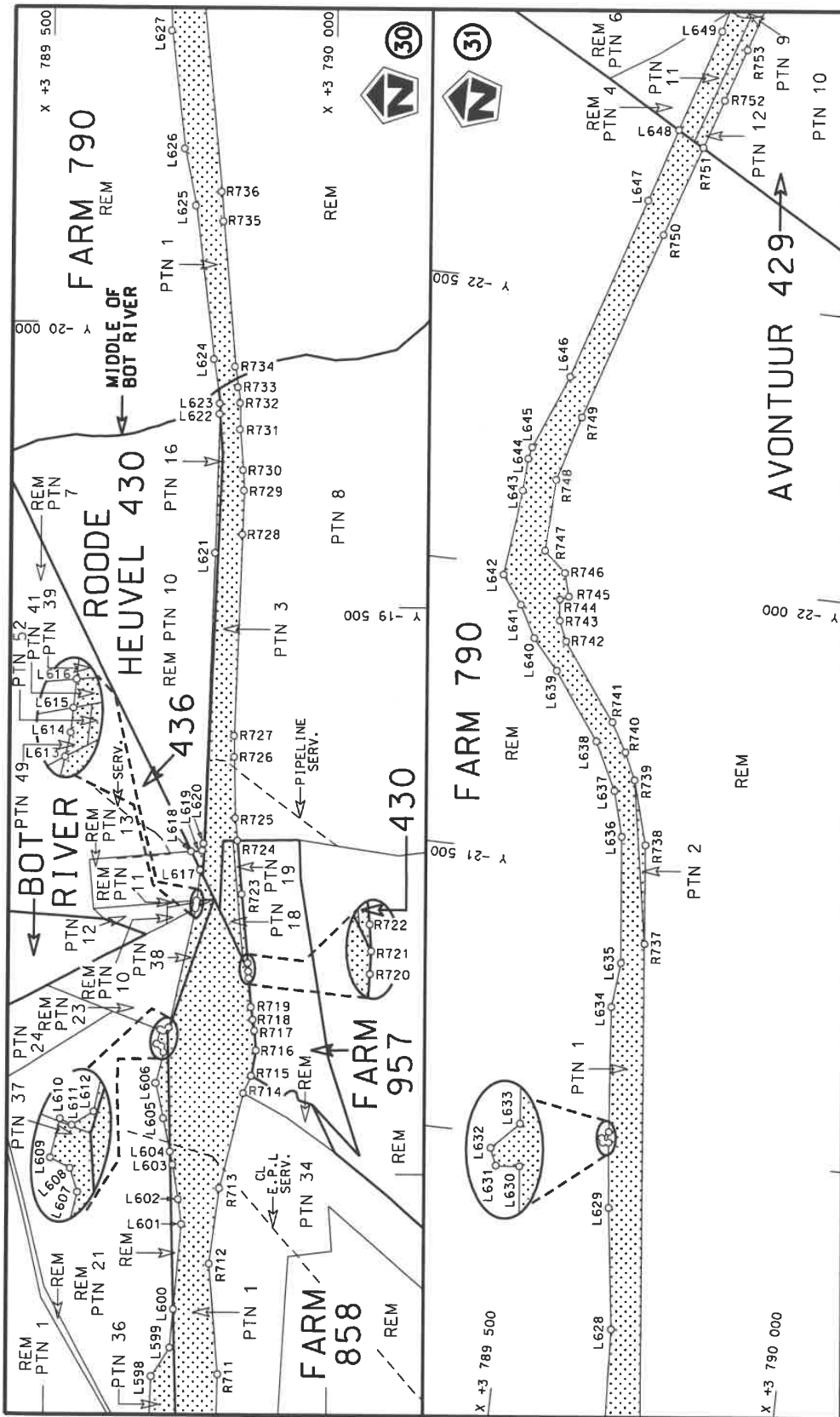
**VERKLARING WYSIGING VAN NASIONALE PAD N2 SEKSIE 2**


WYSIGING VAN VERKLARING No. 812 VAN 2021.

Kragtens Artikel 40(1)(b) van die Suid-Afrikaanse Nasionale Padagentskap Beperk en Nasionale Paaie Wet 1998 (Wet No. 7 van 1998), wysig ek hiermee Verklaring No. 812 van 2021 deur velle 27 en 47 te vervang met bygaande velle 27A en 47A van Plan No. P1110/18.

**(Nasionale Pad N2 Seksie 2: Strand – Caledon)**

MINISTER VAN VERVOER



Die Suid Afrikaanse Nasionale Padagentskap MSB Bpk The South African National Roads Agency SOC Ltd	Die figuur getoon The figure shown		steldie padreserwe voor van 'n gedeelte represents the road reserve of a portion van Nasionale Roete N2 of National Route Section 2	Vel Sheet 27A of 49 Plan P1110/18
-------------------------------------------------------------------------------------------------------	---------------------------------------	---------------------------------------------------------------------------------------	----------------------------------------------------------------------------------------------------------------------------------------------	--------------------------------------------

PADRESERWE KOÖRDINATE / ROAD RESERVE CO-ORDINATES					
LINKERKANT/LEFT HAND SIDE			REGTERKANT/RIGHT HAND SIDE		
	Y	X	WG 19°	Y	X
L715	-29 708.44	3 787 208.06		R715	-18 671.29 3 789 864.05
L716	-29 802.45	3 787 160.60		R716	-18 716.06 3 789 871.94
L717	-29 854.41	3 787 144.91		R717	-18 750.90 3 789 869.17
L718	-29 936.40	3 787 140.77		R718	-18 770.23 3 789 866.15
L719	-30 003.24	3 787 150.96		R719	-18 792.42 3 789 862.71
L720	-30 031.76	3 787 165.59		R720	-18 844.50 3 789 858.61
L721	-30 114.33	3 787 196.92		R721	-18 855.25 3 789 857.76
L722	-30 161.94	3 787 212.86		R722	-18 869.97 3 789 856.80
L723	-30 306.12	3 787 243.78		R723	-18 991.49 3 789 845.10
L724	-30 372.51	3 787 243.36		R724	-19 086.17 3 789 836.30
L725	-30 415.24	3 787 239.10		R725	-19 125.71 3 789 832.30
L726	-30 800.52	3 787 180.15		R726	-19 233.70 3 789 829.62
L727	-30 806.20	3 787 151.03		R727	-19 271.19 3 789 829.16
L728	-30 832.31	3 787 146.41		R728	-19 626.47 3 789 841.60
L729	-30 846.07	3 787 164.82		R729	-19 704.16 3 789 843.77
L730	-31 024.60	3 787 144.27		R730	-19 740.05 3 789 841.95
L731	-31 187.38	3 787 117.49		R731	-19 811.62 3 789 835.74
L732	-31 212.65	3 787 107.04		R732	-19 858.18 3 789 835.57
L733	-31 335.88	3 787 095.86		R733	-19 886.00 3 789 831.37
L734	-31 396.54	3 787 078.08		R734	-19 922.30 3 789 825.76
L735	-31 473.70	3 787 068.04		R735	-20 177.58 3 789 802.66
L736	-31 515.20	3 787 066.09		R736	-20 229.62 3 789 799.13
L737	-31 634.70	3 787 064.56		R737	-21 361.18 3 789 682.38
L738	-31 663.90	3 787 062.53		R738	-21 534.49 3 789 664.43
L739	-31 819.38	3 787 084.47		R739	-21 646.68 3 789 632.51
L740	-32 056.35	3 787 120.12		R740	-21 693.73 3 789 610.59
L741	-32 311.22	3 787 157.58		R741	-21 744.03 3 789 581.46
L742	-32 324.29	3 787 159.50		R742	-21 876.22 3 789 483.42
L743	-32 599.08	3 787 199.45		R743	-21 911.36 3 789 467.85
L744	-32 677.08	3 787 208.26		R744	-21 948.75 3 789 463.63
L745	-32 852.81	3 787 216.41		R745	-21 955.40 3 789 479.25
L746	-33 011.33	3 787 210.12		R746	-21 996.12 3 789 467.74
L747	-33 166.72	3 787 206.04		R747	-22 031.30 3 789 428.04
L748	-33 211.07	3 787 207.88		R748	-22 157.76 3 789 433.15
L749	-33 581.22	3 787 171.53		R749	-22 272.30 3 789 466.15
L750	-34 302.25	3 787 102.63		R750	-22 607.43 3 789 572.69
L751	-34 444.86	3 787 089.00		R751	-22 767.35 3 789 624.13
L752	-34 467.82	3 787 083.07		R752	-22 853.88 3 789 651.96
L753	-34 907.80	3 787 038.69		R753	-22 946.44 3 789 681.46
L754	-35 070.22	3 787 019.73		R754	-23 040.21 3 789 710.54
L755	-35 160.43	3 787 004.17		R755	-23 041.59 3 789 711.03
L756	-35 326.36	3 786 971.41		R756	-23 052.31 3 789 714.83
L757	-35 698.61	3 786 893.62		R757	-23 133.65 3 789 746.51
L758	-35 845.46	3 786 860.34		R758	-23 246.38 3 789 774.03
L759	-35 870.23	3 786 853.37		R759	-23 371.37 3 789 801.62
L760	-35 954.78	3 786 841.73		R760	-23 514.69 3 789 816.30
L761	-35 960.44	3 786 834.05		R761	-23 568.11 3 789 811.76
L762	-35 985.98	3 786 839.98		R762	-23 673.25 3 789 791.64
L763	-36 037.06	3 786 843.30		R763	-23 708.94 3 789 777.33
L764	-36 137.38	3 786 851.82		R764	-23 807.93 3 789 732.10
L765	-36 143.27	3 786 851.58		R765	-23 864.98 3 789 687.68

Vel Sheet 47A Van of 49

P1110/18



Printed by and obtainable from the Government Printer, Bosman Street, Private Bag X85, Pretoria, 0001  
Contact Centre Tel: 012-748 6200. eMail: [info.egazette@gpw.gov.za](mailto:info.egazette@gpw.gov.za)  
Publications: Tel: (012) 748 6053, 748 6061, 748 6065