



Government Gazette Staatskoerant

REPUBLIC OF SOUTH AFRICA
REPUBLIEK VAN SUID-AFRIKA

Vol. 454

Pretoria, 30 April 2003

No. 24833



AIDS HELPLINE: 0800-0123-22 Prevention is the cure

CONTENTS • INHOUD*No.**Page
No. Gazette
No.***GOVERNMENT NOTICE****National Treasury***Government Notice*

- 606 Public Finance Management Act and Division of Revenue Act (5/2002): Statement of the National and Provincial Governments' revenue, expenditure and national borrowing as at 31 March 2003.....

3 24833

GOVERNMENT NOTICE

NATIONAL TREASURY

No. 606

30 April 2003

STATEMENT OF THE NATIONAL AND PROVINCIAL GOVERNMENTS' REVENUE, EXPENDITURE AND NATIONAL BORROWING AS AT 31 MARCH 2003 ISSUED BY THE DIRECTOR-GENERAL: NATIONAL TREASURY

The attached statements of national and provincial governments' revenue, expenditure and national borrowing are issued in accordance with the requirements of Section 32 of the Public Finance Management Act and Section 19 of the Division of Revenue Act 5 of 2002.

National government revenue and expenditure are detailed in schedules 1 and 2 respectively. The tables below indicate revenue and expenditure for the reporting month and the year to date, together with comparable figures for the previous year.

Revenue and expenditure for the fiscal year ended 31 March 2003 are also expressed as percentages of revised information published in the 2003 Budget Review for the current year and the final outcomes for 2001/02.

Revenue Fiscal Year	R million March	R million Year to date	% of Total
2002/03	29 926	278 208	100,9%
2001/02	27 269	248 262	100,0%

Expenditure Fiscal Year	R million March	R million Year to date	% of Total
2002/03	27 399	291 186	99,8%
2001/02	28 354	262 904	100,0%

Schedule 3 contains information on extraordinary receipts and payments not included as revenue or expenditure.

Schedule 4 sets out net financing for the reporting month and the current fiscal year compared with the preliminary outcome for the previous year.

Description	March 2003 R million	Fiscal year 2002/03 R million	March 2002 R million	Fiscal year 2001/02 R million
Domestic short-term loans	(738)	4 214	(1 505)	(7 967)
Domestic long-term loans	(5 834)	(3 017)	1 238	(9 871)
Foreign loans	6	14 310	13	33 131
Change in cash and other balances 1)	(2 321)	(2 726)	(96)	(2 732)
Net Financing 2)	(8 887)	12 781	(350)	12 561

1) A positive change indicates a reduction in cash balances

2) Net financing has been rounded to the nearest million

A cash flow schedule for the Exchequer Account is included as schedule 5, summarising exchequer revenue and departmental requisitions for the National Revenue Fund. These flows differ from the actual receipts and outlays in schedules 1 and 2, mainly because of timing differences between the cash book transactions of departments and the South African Revenue Service, reflected in schedules 1 and 2, and the Exchequer Account cash flows.

The unaudited realized losses on the Gold and Foreign Exchange Contingency Reserve Account (GFECRA) as at 31 March 2003 amounted to R 36,6 bn (2003 Budget Review – R 34,8 bn) compared to R 28,0 bn at 31 March 2002. Taking into account the issuance of R 7,0 bn of nil coupon bonds to the SARB, net losses of R15,6 bn were realized for the 2002/03 financial year.

The following provincial statements are included for each of the nine provinces:

- Provincial Revenue Fund; and
- Transfers and actual expenditure for conditional grants, published in terms of Section 19 of the Division of Revenue Act 5 of 2002.

Care should be taken when using the National and Provincial information, as timing differences in recording transfers between the different spheres could result in the incorrect consolidation of revenue and expenditure information. The head of the relevant provincial treasury furnished the information on provincial revenue funds.

For the attached schedules and the database information in Excel format, contact Mrs. R. Hurn at (012) 315-5567.

STATEMENT OF NATIONAL REVENUE, EXPENDITURE AND BORROWING AS AT 31 MARCH 2003
Summary schedule

Description	Schedule	2002/03			2001/02		
		Revised Estimate R'000	March R'000	Unaudited Fiscal year R'000	Preliminary Outcome R'000	March R'000	Unaudited Fiscal year R'000
Revenue	1	275 745 495	29 926 220	278 208 120	248 262 399	27 268 806	248 262 399
Expenditure		291 822 908	27 398 530	291 186 414	262 904 546	28 354 050	262 904 546
Voted amounts	2	118 920 472	11 061 981	117 301 484	106 817 327	14 917 912	106 817 327
Statutory amounts	2	173 980 933	16 336 549	173 854 909	155 793 215	13 186 214	155 793 215
State debt cost		47 250 000	4 824 289	46 807 724	47 580 748	4 659 011	47 580 748
Transfer to Provinces		123 456 849	10 891 104	123 456 849	105 336 460	8 270 920	105 336 460
Other		3 274 084	621 156	3 590 336	2 876 007	256 283	2 876 007
Standing Appropriations	2	30 370	-	30 021	294 004	249 924	294 004
Projected underspending		(1 108 867)	-	-	-	-	-
Difference between revenue and expenditure		(16 077 413)	2 527 690	(12 978 294)	(14 642 147)	(1 085 244)	(14 642 147)
Extraordinary receipts	3	10 218 900	7 011 992	8 168 465	4 159 140	1 435 109	4 159 140
Extraordinary payments	3	(7 888 800)	(652 913)	(7 970 708)	(2 077 720)	-	(2 077 720)
Net Borrowing requirement		(13 747 313)	8 886 769	(12 780 537)	(12 560 727)	349 865	(12 560 727)
Borrowings							
Domestic short term loans (net)	4	4 000 000	(738 200)	4 213 900	(7 966 600)	(1 505 170)	(7 966 600)
Domestic long term loans (net)	4	(3 123 500)	(5 833 697)	(3 017 384)	(9 871 446)	1 238 419	(9 871 446)
Foreign Loans (net)	4	14 521 400	6 377	14 310 106	33 130 810	13 390	33 130 810
Change in cash and other balances	4	(1 650 587)	(2 321 249)	(2 726 085)	(2 732 037)	(96 504)	(2 732 037)
Total borrowing		13 747 313	(8 886 769)	12 780 537	12 560 727	(349 865)	12 560 727

NATIONAL REVENUE ACCOUNT
Schedule 1. Revenue

Source of revenue	1)	2002/03			2001/02		
		Revised Estimate R'000	March R'000	Unaudited Fiscal year R'000	Audited Outcome R'000	March R'000	Audited Fiscal year R'000
Taxes on income, profits and capital gains		162 500 000	20 552 788	159 703 654	147 310 360	16 527 867	147 310 360
Income tax on persons and individuals		93 800 000	8 915 357	92 260 423	90 976 847	9 920 057	90 976 847
Tax on corporate income							
Companies		55 500 000	9 537 588	54 428 009	42 980 085	4 978 058	42 980 085
Secondary tax on companies		6 300 000	519 027	6 060 862	7 162 721	499 780	7 162 721
Tax on retirement funds		6 900 000	1 580 836	6 954 360	6 190 607	1 129 972	6 190 607
Taxes on payroll and workforce		3 300 000	291 484	3 335 377	2 717 255	201 748	2 717 255
Skills development levy		3 300 000	291 484	3 335 377	2 717 255	201 748	2 717 255
Taxes on property		5 335 000	474 147	5 083 296	4 628 272	461 165	4 628 272
Estate, inheritance and gift taxes							
Donations tax		25 000	1 456	17 695	20 609	1 353	20 609
Estate duty		460 000	39 138	432 727	481 851	37 923	481 851
Taxes on financial and capital transactions							
Marketable securities tax		1 350 000	80 554	1 205 175	1 212 825	125 875	1 212 825
Transfer duties		3 500 000	352 997	3 427 699	2 912 987	295 014	2 912 987
Domestic taxes on goods and services		97 547 160	9 649 901	96 862 817	86 853 218	7 844 821	86 853 218
Value added tax		70 800 000	6 837 079	69 790 958	61 056 608	5 494 093	61 056 608
Specific excise duties		10 282 000	1 301 707	10 246 127	9 797 226	1 147 020	9 797 226
Beer		3 100 000	578 278	3 007 132	2 762 189	347 403	2 762 189
Sorghum beer and sorghum flour		37 000	3 462	37 655	41 275	3 115	41 275
Wine and other fermented beverages		580 000	34 059	544 656	461 339	30 948	461 339
Mineral water		15 000	(532)	15 486	120 682	10 869	120 682
Spirits		1 100 000	136 656	1 131 378	968 229	70 561	968 229
Cigarettes and cigarette tobacco		4 200 000	449 085	4 210 370	3 949 575	414 288	3 949 575
Pipe tobacco and cigars		320 000	37 045	366 937	333 872	44 509	333 872
Petroleum products		680 000	63 854	680 738	656 563	55 794	656 563
Motor cars		-	-	-	-	-	-
Revenue from neighbouring countries		250 000	-	251 775	503 502	169 733	503 502
Ad valorem excise duties		1 020 000	5 783	1 050 184	776 128	8 864	776 128
Levies on fuel		15 200 000	1 444 259	15 333 705	14 923 196	1 161 590	14 923 196
Taxes on specific services							
Levy on financial services		160	-	770	349	-	349
Taxes on use of goods and permission to use goods or to perform activities							
Air departure tax		350 000	23 538	328 489	296 395	33 279	296 395
Mining leases and ownership							
Gold mines		-	-	-	-	-	-
Diamond mines		-	-	-	-	-	-
Other mines		95 000	37 555	112 584	3 315	5	3 315
Taxes on international trade and transactions		9 805 265	610 277	9 738 323	8 680 129	190 063	8 680 129
Import duties							
Customs duties		9 500 000	656 659	9 280 750	8 632 203	693 772	8 632 203
Ordinary levy		4 815	683	5 130	18 671	13 086	18 671
Import surcharge		650	-	674	460	(41)	460
Other							
Miscellaneous customs and excise receipts	4)	300 000	(47 065)	451 789	28 795	(516 754)	28 795

NATIONAL REVENUE ACCOUNT
Schedule 1. Revenue continued page 2

Source of revenue	2002/03			2001/02		
	Revised Estimate R'000	March R'000	Unaudited Fiscal year R'000	Audited Outcome R'000	March R'000	Audited Fiscal Year R'000
Other taxes	1 600 000	120 396	1 571 306	1 767 210	122 706	1 767 210
Stamp duties and fees	1 600 000	120 396	1 571 306	1 767 210	122 706	1 767 210
Unallocated tax revenue	5)	(3 040 804)	5 703 770	-	866 017	-
Total tax revenue (gross)	280 087 425	28 658 189	281 998 543	251 956 444	26 214 387	251 956 444
Less: SACU payments	8 259 425	-	8 259 424	8 204 820	-	8 204 820
Total tax revenue (net of SACU payments)	271 828 000	28 658 189	273 739 119	243 751 624	26 214 387	243 751 624
Departmental revenue	7)			4 510 775	1 054 419	4 510 775
Interest and dividends				1 680 320	208 035	1 680 320
Mining lease rights and licences				87 251	14 509	87 251
Recoveries on loans and repayments				77 168	3 491	77 168
Departmental activities				387 428	21 188	387 428
Extraordinary capital revenue				4 185	254	4 185
Other non-tax revenue				2 274 423	806 932	2 274 423
Other revenue	8)	3 596 000	1 208 333	4 087 618		
Property income						
Interest		1 320 000	155 126	1 643 224		
Dividends		1 057 631	861 449	1 105 803		
Land rent		145 000	15 033	155 085		
Sales of goods and services						
Administrative fees		695 369	92 073	735 705		
Incidental sales		185 000	58 573	227 765		
Fines penalties and forfeits		170 000	25 517	190 619		
Voluntary transfers		-	232	13 417		
Miscellaneous revenue		23 000	330	16 000		
Selling of scrap or waste						
Total revenue from operating activities	9)	275 424 000	29 866 522	277 826 737	248 262 399	27 268 806
Flows due to transactions in assets and liabilities	10)	321 495	59 015	364 603		
Sales of assets		40 000	6 277	59 556		
Loans						
Loans recovered		281 495	7 524	47 077		
Accounts receivable		-	24 091	218 070		
Accounts payable		-				
State warrant vouchers		-	865	14 479		
Unclassified credits		-	20 258	25 421		
Unallocated departmental revenue		-	683	18 780		
Total national government revenue		275 745 495	29 926 220	278 208 120	248 262 399	27 268 806
Reconciliation between total national government revenue, net revenue collected according to SARS's records and revenue collected on statement 5						
Total national government revenue		29 926 220	278 208 120	248 262 399	27 268 806	248 262 399
Revenue collected on behalf of the Provincial Authorities		5 170	65 201	56 389	8 700	56 389
Recoupment of refunds made to the Road Accident Fund (RAF)		-	17 905	2 070	2 070	2 070
Revenue collected on behalf of the Unemployment Insurance Fund (UIF)		390 357	4 040 555	65	65	65
Total net revenue according to the accounting records of SARS		30 321 747	282 331 781	248 320 923	27 279 641	248 320 923
Cash balance National Revenue Fund		(101 802)	(189 670)	(269 050)	191 547	(273 059)
Book profit previously excluded from revenue		-	-	-	-	-
Provincial revenue collected by SARS and transferred by National Treasury for February		(5 650)	(64 463)	-	(3 935)	(57 053)
Provincial revenue collected by SARS and transferred by National Treasury for 2001/2002		-	-	(56 714)	-	-
Direct transfer from National Revenue Fund to the Unemployment Insurance Fund		(515 143)	(3 991 361)	-	-	-
Other departments: Customs and Excise excluded from SARS revenue		(61)	(456)	-	1 764	(100)
Recovery of criminal assets added as part of cash revenue in statement 5		2 773	17 313	809	403	806
Direct deposits by the Universal Service Agency into the Exchequer Account		-	-	9 471	-	9 471
Adjustments Tax and Loan		-	-	(10 277)	(6 982)	(5 826)
Net movement in opening and closing balances		-	-	-	-	-
Other Receipts		-	120 219	-	-	-
Incorrect deposit into Exchequer		-	-	-	(10)	-
Premium on issuance of bonds for financing		-	-	-	(181 874)	-
Revenue collected according to statement 5		29 701 864	278 223 363	247 995 162	27 300 554	247 995 162

- 1) Negative amounts reflect refunds and reclassification of previous recorded amounts
 2) Including sales tax
 3) Specific excise duties on petrol, distillate fuel, residual fuel and base oil
 4) Customs and excise miscellaneous revenue: provisional payments, state warehouse rent, licence fees and interest
 5) Unallocated year to date tax revenue represents the sum of the reported monthly differences between the accounting records and the income tax core system. However, of the R10,642 billion unallocated tax revenue up to March 2003, R4,938 billion have since been allocated to the various taxes
 6) Payments in terms of Customs Union agreements
 7) Classification of departmental revenue for the year ended March 2002, comparable figures not available after this year
 8) Departmental revenue classified according to the 2001 Manual on Government Finance Statistics, comparable figures not available for previous years
 9) Sales of assets and cash flows from financing transactions of national departments classified according to the 2001 Manual on Government Finance Statistics, comparable figures not available for previous years
 10) Unallocated departmental revenue due to the implementation of the new chart of accounts

NATIONAL REVENUE ACCOUNT
Schedule 2. Expenditure - 2002/03

No. Vote		2002/03								
		Revised Estimate			March			Unaudited Fiscal year		
		Current R'000	Capital R'000	Total R'000	Current R'000	Capital R'000	Total R'000	Current R'000	Capital R'000	Total R'000
Voted amounts	1)	99 482 661	19 437 811	118 920 472	8 704 467	2 357 514	11 061 981	98 268 333	19 033 151	117 301 484
CENTRAL GOVERNMENT ADMINISTRATION		11 590 712	3 379 228	14 969 940	448 538	815 421	1 263 959	11 544 244	3 264 569	14 808 813
1 The Presidency		126 886	9 871	136 757	13 046	1 099	14 145	124 612	5 517	130 129
2 Parliament		304 717	7 343	312 060	21 304	612	21 916	304 717	7 343	312 060
3 Foreign Affairs		2 235 134	244 489	2 479 623	(30 824)	120 848	89 924	2 099 672	195 617	2 295 289
4 Home Affairs		1 154 178	332 574	1 486 752	116 378	12 483	128 861	1 058 459	317 658	1 376 117
5 Provincial and Local Government		4 779 986	1 799 652	6 579 638	230 354	333 981	564 335	4 740 029	1 817 654	6 557 683
6 Public Works		2 989 801	985 299	3 975 100	98 380	346 398	444 778	3 216 755	920 780	4 137 535
FINANCIAL AND ADMINISTRATIVE SERVICES		8 580 541	2 772 194	11 352 735	648 607	349 360	997 967	8 063 966	2 748 474	10 812 440
7 Government Communications and Information Systems		145 909	7 819	153 728	6 499	9 993	16 492	142 056	9 993	152 049
8 National Treasury		7 682 376	2 674 276	10 356 654	525 239	333 575	858 814	7 179 964	2 666 898	9 846 862
9 Public Enterprises		247 704	1 374	249 078	53 228	1 038	54 266	222 602	1 339	223 941
10 Public Service and Administration		100 445	48 255	148 700	21 223	3 626	24 849	88 097	49 669	137 766
11 Public Service Commission		56 971	1 000	57 971	6 355	189	6 544	56 353	807	57 160
12 S A Management Development Institute		25 447	923	26 370	2 365	46	2 411	27 438	910	28 348
13 Statistics S A		321 689	38 545	360 234	33 696	893	34 591	347 456	18 858	366 314
SOCIAL SERVICES		17 111 867	4 992 006	22 103 873	939 933	362 547	1 302 480	16 901 412	4 948 117	21 849 529
14 Arts, Culture, Science and Technology	2)	424 851	22 893	447 744	3 846	(3 837)	9	428 698	19 058	447 756
15 Education		8 644 090	232 408	8 876 498	97 908	19 328	117 236	8 602 154	191 175	8 793 329
16 Health		6 912 363	741 634	7 653 997	545 020	1 594	546 614	6 842 734	737 551	7 580 285
17 Housing		391 532	3 907 949	4 299 481	28 143	302 352	330 495	304 130	3 908 835	4 212 965
18 Social Development		647 807	2 444	650 251	255 370	1 451	256 821	636 117	3 986	640 103
19 Sport and Recreation S A		91 224	84 678	175 902	9 646	41 659	51 305	87 579	87 512	175 091
JUSTICE AND PROTECTION SERVICES		47 506 633	2 362 206	49 868 839	4 556 666	238 036	4 794 702	47 780 424	2 035 470	49 815 894
20 Correctional Services		6 015 944	1 010 889	7 026 833	546 978	37 981	584 959	6 078 151	973 787	7 051 938
21 Defence		18 789 708	55 026	18 844 734	1 854 094	-	1 854 094	18 831 898	-	18 831 898
22 Independent Complaints Directorate		27 133	4 769	31 902	2 788	966	3 754	28 966	2 771	31 737
23 Justice and Constitutional Development		3 794 470	457 356	4 251 826	433 700	110 612	544 312	3 816 346	370 431	4 186 777
24 Safety and Security		18 879 378	834 166	19 713 544	1 719 106	88 477	1 807 583	19 025 063	688 481	19 713 544
ECONOMIC SERVICES AND INFRASTRUCTURE DEVELOPMENT		13 843 334	5 799 930	19 643 264	1 963 022	572 511	2 535 533	13 123 027	5 949 731	19 072 758
25 Agriculture		755 675	188 903	944 578	83 973	28 348	112 321	728 656	188 862	917 518
26 Communications		841 739	45 951	887 690	403 526	37 828	441 354	832 996	51 467	884 463
27 Environmental Affairs and Tourism		1 126 264	274 322	1 400 586	121 548	1 992	123 540	1 125 890	240 697	1 366 587
28 Labour		1 148 970	147 203	1 296 173	167 004	9 147	176 151	1 175 595	107 431	1 283 026
29 Land Affairs		485 916	605 945	1 091 861	(50 527)	92 836	42 309	421 057	652 208	1 073 265
30 Minerals and Energy		855 430	1 217 188	1 872 618	81 581	112 642	194 223	633 878	1 214 884	1 848 762
31 Trade and Industry		2 534 759	20 067	2 554 826	399 293	1 958	401 251	2 349 177	9 738	2 358 915
32 Transport		3 895 385	1 936 856	5 832 241	614 256	(79 313)	534 943	3 738 523	1 970 911	5 709 434
33 Water Affairs and Forestry		2 399 198	1 383 495	3 782 691	142 368	367 073	509 441	2 117 255	1 513 533	3 630 788
SOCIAL SERVICES		849 574	132 247	981 821	147 701	19 639	167 340	855 269	86 790	942 059
34 Arts and Culture	2)	348 535	109 224	457 759	54 136	12 939	67 075	348 174	80 090	428 264
35 Science and Technology	2)	501 039	23 023	524 062	93 565	6 700	100 265	507 066	6 700	513 766

1) Departments are grouped according to functional areas that are not related to the GFS functional classification of government operations

2) Reallocation of expenditure to vote 34 and 35

3) These departments have exceeded their capital budget to the PFMA but not their Adjusted Estimate Budget

NATIONAL REVENUE ACCOUNT
Schedule 2. Expenditure - 2002/03 continued page 2

No. Vote	2002/03								
	Revised Estimate			March			Unaudited Fiscal year		
	Current R'000	Capital R'000	Total R'000	Current R'000	Capital R'000	Total R'000	Current R'000	Capital R'000	Total R'000
Statutory amounts	173 980 933	-	173 980 933	16 336 549	-	16 336 549	173 854 909	-	173 854 909
8 State Debt costs	47 250 000	-	47 250 000	4 824 289	-	4 824 289	46 807 724	-	46 807 724
Interest	47 011 000	-	47 011 000	4 819 115	-	4 819 115	46 589 603	-	46 589 603
Other costs	239 000	-	239 000	5 174	-	5 174	218 121	-	218 121
8 Equitable share transfer to Provinces	123 456 849	-	123 456 849	10 891 104	-	10 891 104	123 456 849	-	123 456 849
Other statutory amounts	3 274 084	-	3 274 084	621 156	-	621 156	3 590 336	-	3 590 336
1 The Presidency	1 635	-	1 635	149	-	149	1 691	-	1 691
2 Parliament	168 130	-	168 130	19 109	-	19 109	173 230	-	173 230
3 Foreign Affairs	1	-	1	-	-	-	-	-	-
23 Justice and Constitutional Development	154 318	-	154 318	10 751	-	10 751	155 956	-	155 956
28 Labour	2 950 000	-	2 950 000	591 147	-	591 147	3 259 459	-	3 259 459
Standing appropriations 1)	30 370	-	30 370	-	-	-	30 021	-	30 021
Projected under-spending	(1 108 867)	-	(1 108 867)	-	-	-	-	-	-
Total Expenditure	272 385 097	19 437 811	291 822 908	25 041 016	2 357 514	27 398 530	272 153 263	19 033 151	291 186 414

1) Includes standing appropriations comprising of realised guarantee liabilities, subscription payments to IDA and IBRD as well as valuation adjustment payments to the IMF

NATIONAL REVENUE ACCOUNT
Schedule 2. Expenditure - 2001/02 continued page 3

No. Vote		2001/02								
		Audited Outcome			March			Audited Fiscal year		
		Current R'000	Capital R'000	Total R'000	Current R'000	Capital R'000	Total R'000	Current R'000	Capital R'000	Total R'000
	Voted amounts	91 454 362	15 362 965	106 817 327	11 527 908	3 390 004	14 917 912	91 454 362	15 362 965	106 817 327
	CENTRAL GOVERNMENT ADMINISTRATION	9 553 990	2 289 102	11 843 092	1 157 833	942 905	2 100 738	9 553 990	2 289 102	11 843 092
1	The Presidency	90 689	10 464	101 153	11 534	3 888	15 422	90 689	10 464	101 153
2	Parliament	262 922	6 634	269 556	10 651	696	11 347	262 922	6 634	269 556
3	Foreign Affairs	1 851 428	143 181	1 994 609	382 336	71 490	453 826	1 851 428	143 181	1 994 609
4	Home Affairs	839 004	280 502	1 119 506	89 693	127 245	216 938	839 004	280 502	1 119 506
5	Provincial and Local Government	3 564 252	1 088 814	4 653 066	557 048	411 152	968 200	3 564 252	1 088 814	4 653 066
6	Public Works	2 945 695	759 507	3 705 202	106 571	328 434	435 005	2 945 695	759 507	3 705 202
	FINANCIAL AND ADMINISTRATIVE SERVICES	9 743 938	2 028 904	11 772 842	1 341 778	585 383	1 927 161	9 743 938	2 028 904	11 772 842
7	Government Communications and Information Systems	116 034	6 683	122 717	36 003	6 683	42 686	116 034	6 683	122 717
8	National Treasury	8 476 785	1 904 338	10 381 123	1 049 208	528 483	1 577 691	8 476 785	1 904 338	10 381 123
9	Public Enterprises	192 453	3 962	196 415	8 416	3 962	12 378	192 453	3 962	196 415
10	Public Service and Administration	63 980	35 133	99 113	10 614	5 019	15 633	63 980	35 133	99 113
11	Public Service Commission	52 008	734	52 742	6 794	8	6 802	52 008	734	52 742
12	S A Management Development Institute	20 632	2 163	22 795	1 445	1 040	2 485	20 632	2 163	22 795
13	Statistics S A	822 046	75 891	897 937	229 298	40 188	269 486	822 046	75 891	897 937
	SOCIAL SERVICES	17 825 440	4 213 308	22 038 748	3 064 506	118 996	3 183 502	17 825 440	4 213 308	22 038 748
14	Arts, Culture, Science and Technology	1 102 229	38 607	1 140 836	187 599	28 091	215 690	1 102 229	38 607	1 140 836
15	Education	7 900 705	203 141	8 103 846	83 214	23 710	106 924	7 900 705	203 141	8 103 846
16	Health	6 034 177	702 264	6 736 441	491 091	39 118	530 209	6 034 177	702 264	6 736 441
17	Housing	491 920	3 229 320	3 721 240	280 129	20 860	300 989	491 920	3 229 320	3 721 240
18	Social Development	2 231 843	3 449	2 235 292	2 012 610	(10 143)	2 002 467	2 231 843	3 449	2 235 292
19	Sport and Recreation S A	64 566	36 527	101 093	9 863	17 360	27 223	64 566	36 527	101 093
	JUSTICE AND PROTECTION SERVICES	41 973 017	2 080 326	44 053 343	4 199 455	671 720	4 871 175	41 973 017	2 080 326	44 053 343
20	Correctional Services	5 622 904	926 267	6 549 171	409 616	327 205	736 821	5 622 904	926 267	6 549 171
21	Defence	15 972 882	71 767	16 044 649	1 622 021	71 767	1 693 788	15 972 882	71 767	16 044 649
22	Independent Complaints Directorate	24 005	2 710	26 715	2 549	4 624	7 173	24 005	2 710	26 715
23	Justice and Constitutional Development	3 475 760	286 613	3 762 373	656 360	97 218	753 578	3 475 760	286 613	3 762 373
24	Safety and Security	16 877 466	792 969	17 670 435	1 508 909	173 455	1 682 364	16 877 466	792 969	17 670 435
	ECONOMIC SERVICES AND INFRASTRUCTURE DEVELOPMENT	12 357 977	4 751 325	17 109 302	1 764 336	1 071 000	2 835 336	12 357 977	4 751 325	17 109 302
25	Agriculture	694 811	176 323	871 134	68 833	113 641	182 474	694 811	176 323	871 134
26	Communications	1 103 972	24 365	1 128 337	504 097	6 534	510 631	1 103 972	24 365	1 128 337
27	Environmental Affairs and Tourism	885 465	182 100	1 067 565	137 847	153 448	291 295	885 465	182 100	1 067 565
28	Labour	1 378 070	18 774	1 396 844	124 872	4 356	129 228	1 378 070	18 774	1 396 844
29	Land Affairs	394 467	581 688	976 155	8 558	74 078	82 636	394 467	581 688	976 155
30	Minerals and Energy	597 675	635 721	1 233 396	56 745	85 769	142 514	597 675	635 721	1 233 396
31	Trade and Industry	1 947 976	67 912	2 015 888	288 214	59 747	347 961	1 947 976	67 912	2 015 888
32	Transport	3 336 679	1 600 249	4 936 928	297 687	113 077	410 764	3 336 679	1 600 249	4 936 928
33	Water Affairs and Forestry	2 018 862	1 464 193	3 483 055	277 483	460 320	737 803	2 018 862	1 464 193	3 483 055

1) Departments are grouped according to functional areas that are not related to the GFS functional classification of government operations

NATIONAL REVENUE ACCOUNT
Schedule 2. Expenditure - 2001/02 continued page 4

No. Vote	Audited Outcome			2001/02 March			Audited Fiscal year		
	Current R'000	Capital R'000	Total R'000	Current R'000	Capital R'000	Total R'000	Current R'000	Capital R'000	Total R'000
Statutory amounts	155 793 215	-	155 793 215	13 186 214	-	13 186 214	155 793 215	-	155 793 215
8 State Debt costs	47 580 748	-	47 580 748	4 659 011	-	4 659 011	47 580 748	-	47 580 748
Interest	47 368 052	-	47 368 052	4 644 691	-	4 644 691	47 368 052	-	47 368 052
Other costs	212 696	-	212 696	14 320	-	14 320	212 696	-	212 696
8 Equitable share transfer to Provinces	105 336 460	-	105 336 460	8 270 920	-	8 270 920	105 336 460	-	105 336 460
Other statutory amounts	2 876 007	-	2 876 007	256 283	-	256 283	2 876 007	-	2 876 007
1 The Presidency	1 573	-	1 573	130	-	130	1 573	-	1 573
2 Parliament	162 335	-	162 335	21 082	-	21 082	162 335	-	162 335
3 Foreign Affairs	-	-	-	-	-	-	-	-	-
23 Justice and Constitutional Development	171 083	-	171 083	18 341	-	18 341	171 083	-	171 083
28 Labour	2 541 016	-	2 541 016	216 750	-	216 750	2 541 016	-	2 541 016
Standing appropriations	294 004	-	294 004	249 924	-	249 924	294 004	-	294 004
Total Expenditure	247 541 581	15 362 965	262 904 546	24 964 046	3 360 004	28 354 050	247 541 581	15 362 965	262 904 546

- 1) Includes standing appropriations comprising of realised guarantee liabilities, subscription payments to IDA and IBRD as well as valuation adjustment payments to the IMF
2) Audit not finalised

NATIONAL REVENUE ACCOUNT
Schedule 3. Extraordinary receipts / payments

Description	2002/03			2001/02		
	Revised Estimate R'000	March R'000	Unaudited Fiscal year R'000	Preliminary Outcome R'000	March R'000	Unaudited Fiscal year R'000
Extraordinary receipts (excludes book profit)	10 218 900	7 011 992	8 168 465	4 159 140	1 435 109	4 159 140
- Special restructuring proceeds from SASRIA	-	-	-	2 225 491	-	2 225 491
- Special restructuring proceeds from SAFCOL	-	-	-	66 667	-	66 667
- Special restructuring proceeds from Airwing	-	-	-	5 829	-	5 829
- Special restructuring proceeds from Transnet's disposal of its equity in M-Cell	-	597 066	1 620 344	1 435 109	1 435 109	1 435 109
- Profit on conversion of foreign loans	-	-	1 251	1 785	-	1 785
- Incorrect deposit into the Exchequer	-	-	-	1 000	-	1 000
- Premium on issuance of bonds for financing	-	41 175	170 314	374 059	-	374 059
- Premium on debt portfolio restructuring	-	-	2 806	49 200	-	49 200
- Proceeds from Telkom IPO	-	4 163 750	4 163 750	-	-	-
- Special restructuring proceeds from Central Energy Fund	-	2 210 000	2 210 000	-	-	-
Extraordinary payments	(7 888 800)	(652 913)	(7 970 708)	(2 077 720)	-	(2 077 720)
- Premium on debt portfolio restructuring	-	-	(314 169)	(2 075 023)	-	(2 075 023)
- Losses on conversion of foreign loans	-	(209)	(3 835)	(2 697)	-	(2 697)
- Losses on GFECRA	-	-	(7 000 000)	-	-	-
- Takeover of former Regional Authorities debt	-	(108 162)	(108 162)	-	-	-
- Takeover of SA Housing Trust debt	-	(544 542)	(544 542)	-	-	-
Book profit	-	-	80 897	1 063 827	-	1 063 827

1) The extraordinary payment of R7.0 billion represents all coupon bonds issued to the SARB to defray part of the losses on the Gold and Foreign Exchange Contingency Reserve Account

NATIONAL REVENUE ACCOUNTS
SCHEDULE 4. SUMMARY SCHEDULE OF BORROWING

Description	Schedule	2002/03			2001/02		
		Revised Estimate R'000	March R'000	Unaudited Fiscal year R'000	Preliminary Outcome R'000	March R'000	Unaudited Fiscal year R'000
Domestic short-term loans (net)		4 000 000	(738 200)	4 213 900	(7 966 600)	(1 505 170)	(7 966 600)
Treasury Bills		4 000 000	1 850 000	4 140 000	(7 590 000)	(642 370)	(7 590 000)
Shorter than 91 days		-	-	-	-	-	-
91 days		4 000 000	2 000 000	4 000 000	(7 300 000)	(642 370)	(7 300 000)
182 days		-	(150 000)	140 000	(290 000)	-	(290 000)
Corporation for Public Deposits		-	(2 588 200)	73 900	(376 600)	(662 800)	(376 600)
Domestic long-term loans (net)		(3 123 500)	(5 833 697)	(3 017 384)	(9 871 446)	1 238 419	(9 871 446)
Loans issued for financing (net)		(6 964 700)	(2 486 401)	(6 940 266)	(12 087 955)	1 238 419	(12 087 955)
Loans issued (gross)	4.1	15 532 100	3 286 989	15 549 972	14 647 051	1 236 091	14 647 051
Discount	4.1	(344 200)	(22 702)	(355 025)	(323 320)	-	(323 320)
Redemptions	4.2	(21 642 300)	(5 750 688)	(21 624 942)	(22 433 418)	2 328	(22 433 418)
Scheduled		(510 300)	-	(510 271)	(3 978 268)	-	(3 978 268)
Buy-backs (excluding book profit)		-	-	-	-	-	-
Loans issued for switches (net)		270 200	-	270 178	2 216 509	-	2 216 509
Loans issued (gross)	4.1	7 674 800	-	7 674 799	40 914 059	-	40 914 059
Discount	4.1	(246 500)	-	(246 488)	(1 675 321)	-	(1 675 321)
Loans switched (excluding book profit)	4.2	(7 158 100)	-	(7 158 133)	(37 022 229)	-	(37 022 229)
Loans issued for extraordinary purposes (net)	1)	3 571 000	(3 347 296)	3 652 704	-	-	-
Loans issued (gross)	4.1	7 571 000	652 704	7 652 704	-	-	-
Buy-backs	4.1	(4 000 000)	(4 000 000)	(4 000 000)	-	-	-
Foreign long-term loans (net)	4.3	14 521 400	6 377	14 310 106	33 130 810	13 390	33 130 810
Loans issued for financing (net)		15 864 500	6 377	15 663 246	33 130 810	13 390	33 130 810
Loans issued (gross)		16 131 200	6 377	15 919 984	33 256 773	13 390	33 256 773
Discount		(226 000)	-	(226 016)	(57 097)	-	(57 097)
Redemptions		(29 400)	-	(29 385)	(22 134)	-	(22 134)
Rand value at date of issue		(11 300)	-	(11 337)	(46 732)	-	(46 732)
Revaluation		-	-	-	-	-	-
Loans issued due to \$1 500 MIL Dual Currency Term Loan options		(1 343 100)	-	(1 343 140)	-	-	-
Loans issued (gross)		13 944 697	-	13 944 657	-	-	-
Discount		-	-	-	-	-	-
Redemptions		-	-	-	-	-	-
Rand value at date of issue		(16 300 409)	-	(16 300 409)	-	-	-
Revaluation		1 012 612	-	1 012 612	-	-	-
Change in cash and other balances	4.4	(1 650 587)	(2 321 249)	(2 726 085)	(2 732 037)	(96 504)	(2 732 037)
Change in cash balances		(3 050 587)	(1 679 842)	(3 180 464)	(3 899 065)	(2 753 429)	(3 899 065)
Outstanding transfers from the Exchequer to the Paymaster-General Accounts		-	2 295	495 237	554 999	(2 829 753)	554 999
Surrenders		1 400 000	245 306	1 703 383	2 272 996	405 984	2 272 996
Late requests		-	(60 430)	(154 473)	(59 066)	(4 724)	(59 066)
Reconciliation between actual revenue and actual expenditure against National Revenue Fund flows		-	(628 578)	(1 589 768)	(1 601 871)	4 885 418	(1 601 871)
TOTAL BORROWING		13 747 313	(8 896 769)	12 780 637	12 560 727	(349 865)	12 560 727

1) This represents nil coupon bonds issued to the SARB to defray part of the losses on the Gold and Foreign Exchange Contingency Reserve Account, takeover of SA Housing Trust debt and debt of former Regional Authorities. A contra entry has been made under extraordinary payments.

NATIONAL REVENUE ACCOUNTS
SCHEDULE 4.1 ISSUANCE OF DOMESTIC LONG-TERM LOANS

Description	2002/03			2001/02		
	Revised Estimate R'000	March R'000	Unaudited Fiscal year R'000	Preliminary Outcome R'000	March R'000	Unaudited Fiscal year R'000
Domestic long-term loans (gross)	30 777 900	3 939 693	30 877 475	55 561 110	1 236 091	55 561 110
Loans issued for financing	15 532 100	3 286 989	15 549 972	14 647 051	1 236 091	14 647 051
Loans issued for switches	7 674 800	-	7 674 799	40 914 059	-	40 914 059
Loans issued for extraordinary purposes	7 571 000	652 704	7 652 704	-	-	-
Loans issued for financing (gross)	15 532 100	3 286 989	15 549 972	14 647 051	1 236 091	14 647 051
Cash value	15 187 900	3 029 020	14 128 073	13 723 429	1 045 675	13 723 429
Discount	344 200	22 702	355 025	323 320	-	323 320
Premium	-	(41 176)	(170 314)	(122 231)	-	(122 231)
Revaluation	-	276 443	1 237 188	722 533	190 416	722 533
R150 (12.00% 2004-5-6/02/28)	-	-	-	1 035 000	-	1 035 000
Cash value	-	-	-	1 055 198	-	1 055 198
Discount	-	-	-	1 601	-	1 601
Premium	-	-	-	(21 799)	-	(21 799)
R153 (13.00% 2009-10-11/08/31)	-	-	-	584 000	-	584 000
Cash value	-	-	-	636 147	-	636 147
Discount	-	-	-	-	-	-
Premium	-	-	-	(72 147)	-	(72 147)
R157 (13.50% 2014-15-16/09/15)	-	-	209 000	-	-	-
Cash value	-	-	282 719	-	-	-
Discount	-	-	-	-	-	-
Premium	-	-	(53 719)	-	-	-
R186 (10.50% 2025-26-27/12/21)	-	300 000	2 440 000	1 317 000	-	1 317 000
Cash value	-	341 176	2 541 406	1 320 707	-	1 320 707
Discount	-	-	15 189	24 578	-	24 578
Premium	-	(41 176)	(116 595)	(28 285)	-	(28 285)
R189 (6.25% 2013/03/31)	-	-	346 774	2 614 404	-	2 614 404
Cash value	-	-	250 000	2 200 000	-	2 200 000
Discount	-	-	-	-	-	-
Premium	-	-	-	-	-	-
Revaluation	-	-	96 774	414 404	-	414 404
R194 (10.00% 2007-08-09/02/28)	-	1 198 000	5 789 000	5 305 000	-	5 305 000
Cash value	-	1 177 383	5 458 639	5 025 028	-	5 025 028
Discount	-	20 617	330 361	279 972	-	279 972
Premium	-	-	-	-	-	-
R197 (5.50% 2023/12/07)	-	716 876	4 349 611	3 608 129	1 190 416	3 608 129
Cash value	-	500 000	3 285 000	3 282 831	1 000 000	3 282 831
Discount	-	-	-	17 169	-	17 169
Premium	-	-	-	-	-	-
Revaluation	-	216 876	1 064 611	308 129	190 416	308 129
R198 (3.80% 2008/03/31)	-	559 587	1 670 804	-	-	-
Cash value	-	500 000	1 588 468	-	-	-
Discount	-	-	6 533	-	-	-
Premium	-	-	-	-	-	-
Revaluation	-	59 587	75 803	-	-	-
R199 (11.32% 2007/03/30)	-	500 000	600 000	-	-	-
Cash value	-	497 915	597 058	-	-	-
Discount	-	2 085	2 942	-	-	-
Premium	-	-	-	-	-	-

NATIONAL REVENUE ACCOUNTS
SCHEDULE 4.1 ISSUANCE OF DOMESTIC LONG-TERM LOANS CONTINUED PAGE 2

Description	2002/03			2001/02		
	Revised Estimate R'000	March R'000	Unaudited Fiscal year R'000	Preliminary Outcome R'000	March R'000	Unaudited Fiscal year R'000
Amortised interest on Zero Coupon loans (cash value)	-	12 546	144 783	203 518	45 675	203 518
Z005 (13.913% 2008/08/31)	-	-	1 502	1 313	-	1 313
Z006 (13.912% 2013/08/31)	-	-	919	804	-	804
Z008 (14.299% 2008/10/31)	-	-	572	499	-	499
Z009 (12.15% 2013/11/30)	-	-	272	241	-	241
Z013 (12.04% 2004/06/30)	-	-	648	577	-	577
Z014 (12.60% 2015/06/30)	-	-	3 320	2 867	-	2 867
Z015 (12.60% 2006/06/30)	-	-	514	457	-	457
Z018 (13.35% 2014/03/31)	-	103	199	175	90	175
Z019 (13.30% 2014/06/30)	-	-	688	604	-	604
Z020 (13.20% 2015/10/19)	-	-	1 752	1 538	-	1 538
Z021 (12.60% 2009/04/30)	-	-	2 658	2 352	-	2 352
Z025 (13.00% 2014/11/30)	-	-	849	749	-	749
Z064 (16.48% 2002/09/01)	-	-	11 420	20 299	10 551	20 299
Z065 (16.53% 2005/07/01)	-	-	1 974	1 685	-	1 685
Z066 (16.54% 2002/09/01)	-	-	3 820	6 786	3 528	6 786
Z068 (16.45% 2001/04/01)	-	-	-	1 090	-	1 090
Z069 (15.71% 2005/06/30)	-	-	3 847	3 307	-	3 307
Z070 (15.70% 2005/07/01)	-	-	5 768	4 959	-	4 959
Z071 (15.64% 2015/07/01)	-	-	10 725	9 237	-	9 237
Z073 (15.60% 2005/12/31)	-	-	889	765	-	765
Z075 (14.85% 2002/09/01)	-	-	22 173	39 901	20 657	39 901
Z076 (14.68% 2001/04/01)	-	-	-	1 681	-	1 681
Z079 (14.02% 2003/04/01)	-	-	2 606	2 275	-	2 275
Z083 (15.25% 2019/09/30)	-	940	1 814	1 566	812	1 566
Z086 (14.35% 2002/04/01)	-	-	8 771	15 820	-	15 820
Z089 (14.97% 2002/04/30)	-	-	34 835	62 558	-	62 558
Z109 (15.25% 2019/09/15)	-	11 503	22 248	19 413	10 037	19 413
Loans issued for switches	7 674 800	-	7 674 799	40 914 059	-	40 914 059
Cash value	7 428 300	-	7 428 127	37 557 270	-	37 557 270
Discount	246 500	-	246 488	1 675 321	-	1 675 321
Premium	-	-	(2 807)	(49 200)	-	(49 200)
Revaluation	-	-	2 991	1 730 668	-	1 730 668
R150 (12.00% 2004-5-6/02/28)	-	-	997 193	487 527	-	487 527
Cash value	-	-	1 000 000	512 939	-	512 939
Discount	-	-	-	-	-	-
Premium	-	-	(2 807)	(25 412)	-	(25 412)
R186 (10.50% 2025-26-27/12/21)	-	-	2 932 216	765 256	-	765 256
Cash value	-	-	2 873 028	789 044	-	789 044
Discount	-	-	59 188	-	-	-
Premium	-	-	-	(23 788)	-	(23 788)
R189 (6.25% 2013/03/31)	-	-	10 395	9 434 791	-	9 434 791
Cash value	-	-	7 404	7 712 339	-	7 712 339
Discount	-	-	-	-	-	-
Premium	-	-	-	-	-	-
Revaluation	-	-	2 991	1 722 452	-	1 722 452
R194 (10.00% 2007-08-09/02/28)	-	-	3 734 995	30 070 751	-	30 070 751
Cash value	-	-	3 547 695	28 395 430	-	28 395 430
Discount	-	-	187 300	1 675 321	-	1 675 321
Premium	-	-	-	-	-	-
R197 (5.50% 2023/12/07)	-	-	-	155 734	-	155 734
Cash value	-	-	-	147 518	-	147 518
Discount	-	-	-	-	-	-
Premium	-	-	-	-	-	-
Revaluation	-	-	-	8 216	-	8 216

NATIONAL REVENUE ACCOUNTS
SCHEDULE 4.1 ISSUANCE OF DOMESTIC LONG-TERM LOANS CONTINUED PAGE 3

Description	2002/03			2001/02		
	Revised Estimate R'000	March R'000	Unaudited Fiscal year R'000	Preliminary Outcome R'000	March R'000	Unaudited Fiscal year R'000
Loans issued for extraordinary purposes	7 571 000	652 704	7 652 704	-	-	-
Cash value	7 571 000	652 704	7 652 704	-	-	-
Discount	-	-	-	-	-	-
Premium	-	-	-	-	-	-
Revaluation	-	-	-	-	-	-
Z016 (0.00% 2014/03/31)	-	-	7 000 000	-	-	-
Cash value	-	-	7 000 000	-	-	-
Discount	-	-	-	-	-	-
Premium	-	-	-	-	-	-
Revaluation	-	-	-	-	-	-
R150 (12.00% 2004-5-6/02/28)	-	108 162	108 162	-	-	-
Cash value	-	108 162	108 162	-	-	-
Discount	-	-	-	-	-	-
Premium	-	-	-	-	-	-
Revaluation	-	-	-	-	-	-
SA Housing Trust	-	544 542	544 542	-	-	-
Cash value	-	544 542	544 542	-	-	-
Discount	-	-	-	-	-	-
Premium	-	-	-	-	-	-
Revaluation	-	-	-	-	-	-

NATIONAL REVENUE ACCOUNTS
SCHEDULE 4.2 REDEMPTION OF DOMESTIC LONG-TERM LOANS

Description	2002/03			2001/02		
	Revised Estimate R'000	March R'000	Unaudited Fiscal year R'000	Preliminary Outcome R'000	March R'000	Unaudited Fiscal year R'000
Redemption of domestic long-term loans	33 391 597	9 750 688	33 374 243	64 497 742	(2 328)	64 497 742
Scheduled	21 642 300	5 750 688	21 624 942	22 433 418	(2 328)	22 433 418
Due to switches	7 213 991	-	7 214 024	37 933 652	-	37 933 652
Due to buy-backs	535 308	-	535 277	4 130 672	-	4 130 672
Due to buy-backs - extraordinary issues	4 000 000	4 000 000	4 000 000	-	-	-
Scheduled redemptions	21 642 300	5 750 688	21 624 942	22 433 418	(2 328)	22 433 418
BT01 (10.30% 2003/03/31)	-	600	600	-	-	-
BT28 (17.40% 2001/09/30)	-	-	-	10 000	-	10 000
CK13 (10.62% 2001/04/30)	-	-	-	4 750	-	4 750
G202 (13.75% 2001/09/30)	-	-	-	5 000	-	5 000
LW08 (12.50% 2002/10/31)	-	-	11 600	-	-	-
R088 (9.75% 2001/04/30)	-	-	-	116	-	116
R100 (9.25% 2002/04/15)	-	-	9 895	-	-	-
R101 (9.80% 2001/07/15)	-	-	-	14 511	-	14 511
R103 (10.35% 2001/10/01)	-	-	-	454	-	454
R104 (11.50% 2001/12/01)	-	-	-	15 516	-	15 516
R111 (13.00% 2002/06/15)	-	-	6 104	-	-	-
R113 (13.00% 2002/05/01)	-	-	2 381	-	-	-
R162 (12.50% 2002/01/15)	-	-	-	21 745 958	-	21 745 958
R174 (8.75% 2001/07/15)	-	-	-	538 900	-	538 900
R175 (9.00% 2002/10/15)	-	-	14 515 160	-	-	-
R193 (10.99% 2003/03/30)	-	5 750 000	5 750 000	-	-	-
SL08 (13.30% 2001/08/30)	-	-	-	15 350	-	15 350
SL09 (13.60% 2002/07/01)	-	-	40 000	-	-	-
SL15 (12.00% 2002/11/30)	-	-	21 600	-	-	-
TR13 (13.50% 2002/11/30)	-	-	12 001	-	-	-
Z064 (16.48% 2002/08/01)	-	-	150 000	-	-	-
Z066 (16.54% 2002/09/01)	-	-	50 000	-	-	-
Z068 (16.45% 2001/04/01)	-	-	-	15 000	-	15 000
Z075 (14.85% 2002/09/01)	-	-	324 500	-	-	-
Z076 (14.68% 2001/04/01)	-	-	-	25 000	-	25 000
Z086 (14.350% 2002/04/01)	-	-	131 000	-	-	-
Z089 (14.970% 2002/04/30)	-	-	500 000	-	-	-
Former regional authorities' debt	-	88	50 263	21 028	(2 328)	21 028
Former SARB Namibian loan facility	-	-	49 838	23 835	-	23 835
Redemptions due to switches	7 213 991	-	7 214 024	37 933 652	-	37 933 652
Cash value	-	-	7 454 446	39 005 386	-	39 005 386
Book profit	-	-	55 891	911 423	-	911 423
Book loss	-	-	(298 313)	(1 983 157)	-	(1 983 157)
R124 (13.00% 2005/07/15)	-	-	123	-	-	-
Cash value	-	-	127	-	-	-
Book profit	-	-	(4)	-	-	-
Book loss	-	-	-	-	-	-
R126 (14.50% 2006/10/15)	-	-	90	-	-	-
Cash value	-	-	98	-	-	-
Book profit	-	-	(8)	-	-	-
Book loss	-	-	-	-	-	-
R150 (12.00% 2004-5-9/02/28)	-	-	-	500 000	-	500 000
Cash value	-	-	-	527 316	-	527 316
Book profit	-	-	-	(27 316)	-	(27 316)
Book loss	-	-	-	-	-	-
R162 (12.50% 2002/01/15)	-	-	-	500 000	-	500 000
Cash value	-	-	-	500 754	-	500 754
Book profit	-	-	-	(754)	-	(754)
Book loss	-	-	-	-	-	-
R173 (13.45% 2006/09/30)	-	-	-	1 400 000	-	1 400 000
Cash value	-	-	-	1 493 965	-	1 493 965
Book profit	-	-	-	(93 965)	-	(93 965)
Book loss	-	-	-	-	-	-
R175 (9.00% 2002/10/15)	-	-	-	529 000	-	529 000
Cash value	-	-	-	523 055	-	523 055
Book profit	-	-	-	5 945	-	5 945
Book loss	-	-	-	-	-	-
R177 (9.50% 2007/05/15)	-	-	179 205	5 337 111	-	5 337 111
Cash value	-	-	163 382	4 931 185	-	4 931 185
Book profit	-	-	15 823	405 926	-	405 926
Book loss	-	-	-	-	-	-
R157 (13.50% 2014-15-16/09/15)	-	-	2 000 000	-	-	-
Cash value	-	-	2 247 609	-	-	-
Book profit	-	-	-	-	-	-
Book loss	-	-	(247 609)	-	-	-
R178 (9.75% 2008/07/15)	-	-	651 000	720 000	-	720 000
Cash value	-	-	610 932	642 307	-	642 307
Book profit	-	-	40 068	77 693	-	77 693
Book loss	-	-	-	-	-	-
R179 (10.00% 2013/08/01)	-	-	-	3 476 000	-	3 476 000
Cash value	-	-	-	3 055 052	-	3 055 052
Book profit	-	-	-	420 948	-	420 948
Book loss	-	-	-	-	-	-
R180 (13.45% 2007/09/30)	-	-	-	1 400 000	-	1 400 000
Cash value	-	-	-	1 500 151	-	1 500 151
Book profit	-	-	-	(100 151)	-	(100 151)
Book loss	-	-	-	-	-	-

NATIONAL REVENUE ACCOUNTS
SCHEDULE 4.2 REDEMPTION OF DOMESTIC LONG-TERM LOANS CONTINUED PAGE 2

Description	2002/03			2001/02		
	Revised Estimate R'000	March R'000	Unaudited Fiscal year R'000	Preliminary Outcome R'000	March R'000	Unaudited Fiscal year R'000
R181 (13.45% 2008/09/30)	-	-	-	1 400 000	-	1 400 000
Cash value	-	-	-	1 494 212	-	1 494 212
Book profit	-	-	-	-	-	-
Book loss	-	-	-	(94 212)	-	(94 212)
R182 (13.55% 2012/09/30)	-	-	-	1 400 000	-	1 400 000
Cash value	-	-	-	1 537 644	-	1 537 644
Book profit	-	-	-	-	-	-
Book loss	-	-	-	(137 644)	-	(137 644)
R183 (13.55% 2013/09/30)	-	-	-	1 300 000	-	1 300 000
Cash value	-	-	-	1 435 730	-	1 435 730
Book profit	-	-	-	-	-	-
Book loss	-	-	-	(135 730)	-	(135 730)
R184 (12.50% 2006/12/21)	-	-	1 383 806	18 704 664	-	18 704 664
Cash value	-	-	1 432 298	20 098 049	-	20 098 049
Book profit	-	-	-	-	-	-
Book loss	-	-	(48 692)	(1 393 385)	-	(1 393 385)
R186 (10.50% 2025-26-27/12/21)	-	-	-	13 094	-	13 094
Cash value	-	-	-	12 183	-	12 183
Book profit	-	-	-	911	-	911
Book loss	-	-	-	-	-	-
Z016 (0.00% 2014/03/31)	-	-	3 000 000	1 253 783	-	1 253 783
Cash value	-	-	3 000 000	1 253 783	-	1 253 783
Book profit	-	-	-	-	-	-
Book loss	-	-	-	-	-	-
Redemptions due to buy-backs	535 306	-	535 277	4 130 672	-	4 130 672
Cash value	-	-	528 127	4 070 135	-	4 070 135
Book profit	-	-	25 006	152 404	-	152 404
Book loss	-	-	(17 856)	(91 867)	-	(91 867)
BT01 (10.30% 2003/03/31)	-	-	7 626	1 474	-	1 474
Cash value	-	-	7 507	1 473	-	1 473
Book profit	-	-	119	1	-	1
Book loss	-	-	-	-	-	-
BT03 (13.60% 2004/09/30)	-	-	-	3 700	-	3 700
Cash value	-	-	-	3 945	-	3 945
Book profit	-	-	-	-	-	-
Book loss	-	-	-	(245)	-	(245)
BT04 (13.60% 2004/09/30)	-	-	500	13 000	-	13 000
Cash value	-	-	519	13 873	-	13 873
Book profit	-	-	-	-	-	-
Book loss	-	-	(19)	(873)	-	(873)
BT05 (11.50% 2005/09/30)	-	-	-	23 150	-	23 150
Cash value	-	-	-	23 698	-	23 698
Book profit	-	-	-	-	-	-
Book loss	-	-	-	(548)	-	(548)
BT10 (14.45% 2005/03/31)	-	-	-	3 970	-	3 970
Cash value	-	-	-	4 404	-	4 404
Book profit	-	-	-	-	-	-
Book loss	-	-	-	(434)	-	(434)
BT14 (13.90% 2003/09/30)	-	-	-	12 200	-	12 200
Cash value	-	-	-	12 817	-	12 817
Book profit	-	-	-	-	-	-
Book loss	-	-	-	(617)	-	(617)
BT16 (14.75% 2004/03/31)	-	-	500	14 650	-	14 650
Cash value	-	-	524	15 783	-	15 783
Book profit	-	-	-	-	-	-
Book loss	-	-	(24)	(1 133)	-	(1 133)
CK16 (14.15% 2004/11/30)	-	-	12 325	-	-	-
Cash value	-	-	12 940	-	-	-
Book profit	-	-	-	-	-	-
Book loss	-	-	(615)	-	-	-
CK20 (19.25% 2004/09/30)	-	-	8 000	-	-	-
Cash value	-	-	9 178	-	-	-
Book profit	-	-	-	-	-	-
Book loss	-	-	(1 178)	-	-	-
CK22 (18.75% 2005/10/31)	-	-	10 000	-	-	-
Cash value	-	-	11 891	-	-	-
Book profit	-	-	-	-	-	-
Book loss	-	-	(1 891)	-	-	-
CK23 (19.25% 2006/12/31)	-	-	7 100	15 000	-	15 000
Cash value	-	-	8 885	20 141	-	20 141
Book profit	-	-	-	-	-	-
Book loss	-	-	(1 785)	(5 141)	-	(5 141)

NATIONAL REVENUE ACCOUNTS
SCHEDULE 4.2 REDEMPTION OF DOMESTIC LONG-TERM LOANS CONTINUED PAGE 3

Description	2002/03			2001/02		
	Revised Estimate R'000	March R'000	Unaudited Fiscal year R'000	Preliminary Outcome R'000	March R'000	Unaudited Fiscal year R'000
CK24 (19.15% 2005/04/30)	-	-	5 000	900	-	900
Cash value	-	-	5 879	1 128	-	1 128
Book profit	-	-	-	-	-	-
Book loss	-	-	(879)	(228)	-	(228)
CK25 (19.25% 2006/12/31)	-	-	2 900	-	-	-
Cash value	-	-	3 640	-	-	-
Book profit	-	-	-	-	-	-
Book loss	-	-	(740)	-	-	-
CK26 (19.00% 2003/09/30)	-	-	-	14 000	-	14 000
Cash value	-	-	-	16 295	-	16 295
Book profit	-	-	-	-	-	-
Book loss	-	-	-	(2 295)	-	(2 295)
G204 (13.00% 2003/06/30)	-	-	2 000	2 500	-	2 500
Cash value	-	-	2 014	2 613	-	2 613
Book profit	-	-	-	-	-	-
Book loss	-	-	(14)	(113)	-	(113)
G206 (16.35% 2003/06/30)	-	-	10 000	-	-	-
Cash value	-	-	10 316	-	-	-
Book profit	-	-	-	-	-	-
Book loss	-	-	(316)	-	-	-
G207 (17.20% 2005/08/31)	-	-	7 500	2 500	-	2 500
Cash value	-	-	8 445	3 022	-	3 022
Book profit	-	-	-	-	-	-
Book loss	-	-	(945)	(522)	-	(522)
G210 (18.65% 2005/09/30)	-	-	1 000	3 000	-	3 000
Cash value	-	-	1 167	3 780	-	3 780
Book profit	-	-	-	-	-	-
Book loss	-	-	(167)	(780)	-	(780)
G214 (18.50% 2004/04/01)	-	-	5 400	-	-	-
Cash value	-	-	5 978	-	-	-
Book profit	-	-	-	-	-	-
Book loss	-	-	(578)	-	-	-
LW09 (13.90% 2003/10/31)	-	-	7 290	2 500	-	2 500
Cash value	-	-	7 437	2 675	-	2 675
Book profit	-	-	-	-	-	-
Book loss	-	-	(147)	(175)	-	(175)
LW12 (16.40% 2004/04/30)	-	-	7 080	5 250	-	5 250
Cash value	-	-	7 457	5 940	-	5 940
Book profit	-	-	-	-	-	-
Book loss	-	-	(377)	(690)	-	(690)
LW13 (18.00% 2004/10/31)	-	-	5 000	8 000	-	8 000
Cash value	-	-	5 577	9 557	-	9 557
Book profit	-	-	-	-	-	-
Book loss	-	-	(577)	(1 557)	-	(1 557)
LW14 (16.80% 2005/09/30)	-	-	4 000	-	-	-
Cash value	-	-	4 532	-	-	-
Book profit	-	-	-	-	-	-
Book loss	-	-	(532)	-	-	-
R089 (9.00% 2004/04/15)	-	-	1	2 933	-	2 933
Cash value	-	-	2	2 877	-	2 877
Book profit	-	-	-	56	-	56
Book loss	-	-	(1)	-	-	-
R093 (9.25% 2004/07/01)	-	-	-	9 712	-	9 712
Cash value	-	-	-	9 530	-	9 530
Book profit	-	-	-	182	-	182
Book loss	-	-	-	-	-	-
R097 (9.375% 2004/07/01)	-	-	1	3 917	-	3 917
Cash value	-	-	2	3 881	-	3 881
Book profit	-	-	-	36	-	36
Book loss	-	-	(1)	-	-	-
R106 (12.50% 2003/09/01)	-	-	98	14 710	-	14 710
Cash value	-	-	99	15 512	-	15 512
Book profit	-	-	-	-	-	-
Book loss	-	-	(1)	(802)	-	(802)
R111 (13.00% 2002/09/15)	-	-	-	26 711	-	26 711
Cash value	-	-	-	27 098	-	27 098
Book profit	-	-	-	-	-	-
Book loss	-	-	-	(387)	-	(387)
R124 (13.00% 2005/07/15)	-	-	11 151	138 168	-	138 168
Cash value	-	-	11 522	150 044	-	150 044
Book profit	-	-	-	-	-	-
Book loss	-	-	(371)	(11 876)	-	(11 876)
R126 (14.50% 2006/10/15)	-	-	12 659	106 555	-	106 555
Cash value	-	-	13 892	120 478	-	120 478
Book profit	-	-	-	-	-	-
Book loss	-	-	(1 233)	(13 923)	-	(13 923)

NATIONAL REVENUE ACCOUNTS
SCHEDULE 4.2 REDEMPTION OF DOMESTIC LONG-TERM LOANS CONTINUED PAGE 4

Description	2002/03			2001/02		
	Revised Estimate R'000	March R'000	Unaudited Fiscal year R'000	Preliminary Outcome R'000	March R'000	Unaudited Fiscal year R'000
R133 (15.00% 2007/09/15)	-	-	311	11 730	-	11 730
Cash value	-	-	348	13 947	-	13 947
Book profit	-	-	-	-	-	-
Book loss	-	-	(37)	(2 217)	-	(2 217)
R163 (12.75% 2006/08/01)	-	-	-	134 172	-	134 172
Cash value	-	-	-	146 948	-	146 948
Book profit	-	-	-	-	-	-
Book loss	-	-	-	(12 776)	-	(12 776)
R164 (12.75% 2007/08/01)	-	-	-	378 000	-	378 000
Cash value	-	-	-	394 096	-	394 096
Book profit	-	-	-	-	-	-
Book loss	-	-	-	(16 096)	-	(16 096)
R165 (12.75% 2007/08/01)	-	-	-	88 000	-	88 000
Cash value	-	-	-	92 055	-	92 055
Book profit	-	-	-	-	-	-
Book loss	-	-	-	(4 055)	-	(4 055)
R166 (12.90% 2012/08/01)	-	-	-	88 000	-	88 000
Cash value	-	-	-	93 581	-	93 581
Book profit	-	-	-	-	-	-
Book loss	-	-	-	(5 581)	-	(5 581)
R167 (12.90% 2013/08/01)	-	-	-	88 000	-	88 000
Cash value	-	-	-	93 813	-	93 813
Book profit	-	-	-	-	-	-
Book loss	-	-	-	(5 813)	-	(5 813)
R175 (9.00% 2002/10/15)	-	-	-	750 000	-	750 000
Cash value	-	-	-	747 426	-	747 426
Book profit	-	-	-	2 574	-	2 574
Book loss	-	-	-	-	-	-
R176 (9.25% 2006/09/15)	-	-	-	310 000	-	310 000
Cash value	-	-	-	293 739	-	293 739
Book profit	-	-	-	16 261	-	16 261
Book loss	-	-	-	-	-	-
R177 (9.50% 2007/05/15)	-	-	358 531	1 784 000	-	1 784 000
Cash value	-	-	333 744	1 655 623	-	1 655 623
Book profit	-	-	24 787	128 377	-	128 377
Book loss	-	-	-	-	-	-
R178 (9.75% 2008/07/15)	-	-	-	50 000	-	50 000
Cash value	-	-	-	45 175	-	45 175
Book profit	-	-	-	4 825	-	4 825
Book loss	-	-	-	-	-	-
R184 (12.50% 2006/12/21)	-	-	999	-	-	-
Cash value	-	-	1 028	-	-	-
Book profit	-	-	-	-	-	-
Book loss	-	-	(29)	-	-	-
R186 (10.50% 2025-26-27/12/21)	-	-	1 759	-	-	-
Cash value	-	-	1 731	-	-	-
Book profit	-	-	28	-	-	-
Book loss	-	-	-	-	-	-
R194 (10.00% 2007-08-09/02/28)	-	-	1 496	2 679	-	2 679
Cash value	-	-	1 424	2 587	-	2 587
Book profit	-	-	72	92	-	92
Book loss	-	-	-	-	-	-

NATIONAL REVENUE ACCOUNTS
SCHEDULE 4.2 REDEMPTION OF DOMESTIC LONG-TERM LOANS CONTINUED PAGE 5

Description	2002/03			2001/02		
	Revised Estimate R'000	March R'000	Unaudited Fiscal year R'000	Preliminary Outcome R'000	March R'000	Unaudited Fiscal year R'000
SL11 (14.65% 2003/12/31)	-	-	4 000	2 500	-	2 500
Cash value	-	-	4 134	2 727	-	2 727
Book profit	-	-	-	-	-	-
Book loss	-	-	(134)	(227)	-	(227)
SL27 (17.50% 2004/07/01)	-	-	16 050	-	-	-
Cash value	-	-	17 315	-	-	-
Book profit	-	-	-	-	-	-
Book loss	-	-	(1 265)	-	-	-
TR14 (14.25% 2003/11/30)	-	-	3 000	4 000	-	4 000
Cash value	-	-	3 079	4 319	-	4 319
Book profit	-	-	-	-	-	-
Book loss	-	-	(79)	(319)	-	(319)
TR19 (19.00% 2004/11/30)	-	-	3 000	2 591	-	2 591
Cash value	-	-	3 421	3 178	-	3 178
Book profit	-	-	-	-	-	-
Book loss	-	-	(421)	(587)	-	(587)
TR21 (18.00% 2005/05/31)	-	-	10 000	1 000	-	1 000
Cash value	-	-	11 393	1 223	-	1 223
Book profit	-	-	-	-	-	-
Book loss	-	-	(1 393)	(223)	-	(223)
TR24 (19.25% 2006/06/30)	-	-	9 000	-	-	-
Cash value	-	-	11 107	-	-	-
Book profit	-	-	-	-	-	-
Book loss	-	-	(2 107)	-	-	-
VN05 (16.15% 2006/12/31)	-	-	-	7 500	-	7 500
Cash value	-	-	-	9 134	-	9 134
Book profit	-	-	-	-	-	-
Book loss	-	-	-	(1 634)	-	(1 634)
Redemptions due to buy-backs of loans issued for extraordinary purposes	4 000 000	4 000 000	4 000 000	-	-	-
Cash value	-	4 000 000	4 000 000	-	-	-
Book profit	-	-	-	-	-	-
Book loss	-	-	-	-	-	-
Z016 (0.00% 2014/03/31)	-	4 000 000	4 000 000	-	-	-
Cash value	-	4 000 000	4 000 000	-	-	-
Book profit	-	-	-	-	-	-
Book loss	-	-	-	-	-	-

NATIONAL REVENUE ACCOUNTS
SCHEDULE 4.3 ISSUANCE AND REDEMPTION OF FOREIGN LOANS

Description	2002/03			2001/02		
	Revised Estimate R'000	March R'000	Unaudited Fiscal year R'000	Preliminary Outcome R'000	March R'000	Unaudited Fiscal year R'000
Redemption of foreign long-term loans	15 328 497	-	15 328 519	68 866	-	68 866
Scheduled	40 700	-	40 722	68 866	-	68 866
Due to \$1 500 Mil Dual Currency Term Loan options	15 287 797	-	15 287 797	-	-	-
Scheduled redemptions	40 700	-	40 722	68 866	-	68 866
Rand value at date of issue	29 400	-	29 385	22 134	-	22 134
Revaluation	11 300	-	11 337	46 732	-	46 732
TY2/25 Credit Suisse Rev Credit 2001/08/15	-	-	-	16 678	-	16 678
Rand value at date of issue	-	-	-	2 306	-	2 306
Revaluation	-	-	-	14 372	-	14 372
TY2/30 Dresdner Bank 2001/08/15	-	-	-	17 093	-	17 093
Rand value at date of issue	-	-	-	1 075	-	1 075
Revaluation	-	-	-	16 018	-	16 018
TY2/36A Krediet Bank 2001/08/15	-	-	-	2 028	-	2 028
Rand value at date of issue	-	-	-	875	-	875
Revaluation	-	-	-	1 153	-	1 153
TY2/36B Union Bank 2001/08/15	-	-	-	17 161	-	17 161
Rand value at date of issue	-	-	-	7 450	-	7 450
Revaluation	-	-	-	9 702	-	9 702
TY2/41 SBIEFCO 2001/08/15	-	-	-	3 894	-	3 894
Rand value at date of issue	-	-	-	576	-	576
Revaluation	-	-	-	3 318	-	3 318
TY2/73E Barclays Bank PLC	-	-	40 722	12 012	-	12 012
Rand value at date of issue	-	-	29 385	9 843	-	9 843
Revaluation	-	-	11 337	2 169	-	2 169
Redemptions due to \$1 500 Mil Dual Currency Term Loan options	15 287 797	-	15 287 797	-	-	-
Rand value at date of issue	16 300 409	-	16 300 409	-	-	-
Revaluation	(1 012 612)	-	(1 012 612)	-	-	-
TY2/79 \$1 500 Mil Dual Currency Term Loan	-	-	15 287 797	-	-	-
Rand value at date of issue	-	-	16 300 409	-	-	-
Revaluation	-	-	(1 012 612)	-	-	-
Foreign long-term loans (gross)	30 075 897	6 377	29 864 641	33 256 773	13 390	33 256 773
Loans issued for financing	16 131 200	6 377	15 919 984	33 256 773	13 390	33 256 773
Loans issued due to \$1 500 Mil Dual Currency Term Loan options	13 944 697	-	13 944 657	-	-	-
Loans issued for financing (Gross)	16 131 200	6 377	15 919 984	33 256 773	13 390	33 256 773
Cash value	15 905 200	6 377	15 693 968	33 451 504	13 390	33 451 504
Discount	226 000	-	226 016	57 097	-	57 097
Premium	-	-	-	(251 828)	-	(251 828)
TY2/65 IBRD World Bank Loan 2009/01/15	-	6 377	62 255	27 545	-	27 545
Cash value	-	6 377	62 255	27 545	-	27 545
Discount	-	-	-	-	-	-
Premium	-	-	-	-	-	-
TY2/76 7.00% EURO 500 Mil Notes 2008/04/10	-	-	-	3 618 000	-	3 618 000
Cash value	-	-	-	3 558 903	-	3 558 903
Discount	-	-	-	57 097	-	57 097
Premium	-	-	-	-	-	-
TY2/77 3.80% NOTES JPY 30 000 Mil 2021/09/07	-	-	-	1 993 488	-	1 993 488
Cash value	-	-	-	1 993 488	-	1 993 488
Discount	-	-	-	-	-	-
Premium	-	-	-	-	-	-
TY2/79 \$1 500 Mil Dual Currency Term Loan	-	-	-	17 457 002	-	17 457 002
Cash value	-	-	-	17 457 002	-	17 457 002
Discount	-	-	-	-	-	-
Premium	-	-	-	-	-	-
TY2/74B 9.125% NOTES DUE 2009/05/19	-	-	-	2 837 500	-	2 837 500
Cash value	-	-	-	3 089 328	-	3 089 328
Discount	-	-	-	(251 828)	-	(251 828)
Premium	-	-	-	-	-	-
TY2/78 2.00% NOTES JPY 60 000 Mil 2007/07/18	-	-	-	3 942 181	-	3 942 181
Cash value	-	-	-	3 942 181	-	3 942 181
Discount	-	-	-	-	-	-
Premium	-	-	-	-	-	-
TY2/80 7.375% NOTES DUE 2012/04/25	-	-	10 977 000	-	-	-
Cash value	-	-	10 750 984	-	-	-
Discount	-	-	226 016	-	-	-
Premium	-	-	-	-	-	-
Defence Procurement Export Credit Facilities (cash value)	-	-	4 880 729	3 383 057	13 390	3 383 057
TY2/73A AKA Ausfuhrkredit/Commerzbank/Kreditanstalt	-	-	1 550 386	776 360	-	776 360
TY2/73B AKA Ausfuhrkredit/Commerzbank/Kreditanstalt	-	-	1 092 295	953 232	-	953 232
TY2/73C Societe Generale/Paribas	-	-	212 080	273 999	-	273 999
TY2/73D Mediocredito Centrale S.P.A	-	-	-	246 079	-	246 079
TY2/73E Barclays Bank PLC	-	-	2 025 958	1 133 387	13 390	1 133 387
Loans issued due to \$1 500 Mil Dual Currency Term Loan options	13 944 697	-	13 944 657	-	-	-
Cash value	13 944 697	-	13 944 657	-	-	-
Discount	-	-	-	-	-	-
Premium	-	-	-	-	-	-
TY2/79 \$1 500 Mil Dual Currency Term Loan	-	-	13 944 657	-	-	-
Cash value	-	-	13 944 657	-	-	-
Discount	-	-	-	-	-	-
Premium	-	-	-	-	-	-

**NATIONAL REVENUE ACCOUNTS
SCHEDULE 4.4 CHANGE IN CASH AND OTHER BALANCES**

Description	2002/03			2001/02		
	Revised Estimate R'000	March R'000	Unaudited Fiscal year R'000	Preliminary Outcome R'000	March R'000	Unaudited Fiscal year R'000
Change in cash balances 1)	(3 050 587)	(1 879 842)	(3 180 464)	(3 899 065)	(2 753 429)	(3 899 065)
Opening balance	6 549 413	7 849 977	6 549 355	2 650 290	3 795 926	2 650 290
Exchequer account	-	150 444	493 005	539 688	255 781	539 688
Tax and Loan account	-	7 699 533	6 056 350	2 110 602	3 540 145	2 110 602
Closing balance	9 600 000	9 729 819	9 729 819	6 549 355	6 549 355	6 549 355
Exchequer account	-	249 010	249 010	493 005	493 005	493 005
Tax and Loan account	-	9 480 809	9 480 809	6 056 350	6 056 350	6 056 350
Outstanding transfers from the Exchequer to the Paymaster-General Accounts	-	2 295	495 237	554 999	(2 629 753)	554 999
Surrenders by National Departments 2)	1 400 000	245 306	1 703 383	2 272 998	405 984	2 272 998
2001/2002	-	215 024	1 656 864	26 675	16 500	26 675
2000/2001	-	29 988	35 221	2 215 347	389 484	2 215 347
1999/2000	-	283	515	30 974	-	30 974
1998/1999	-	-	752	-	-	-
1997/1998	-	31	31	-	-	-
Late requests by National Departments 3)	-	(60 430)	(154 473)	(59 086)	(4 724)	(59 086)
2001/2002 (inclusive of RDP)	-	(59 884)	(59 884)	-	-	-
2000/2001 (inclusive of RDP)	-	-	(94 043)	(58 169)	(4 724)	(58 169)
1999/2000 (inclusive of RDP)	-	-	-	-	-	-
1998/1999 (inclusive of RDP)	-	(546)	(546)	(927)	-	(927)
Reconciliation between actual revenue and actual expenditure against National Revenue Fund flows	-	(628 578)	(1 589 768)	(1 601 871)	4 885 418	(1 601 871)
Total change in cash and other balances	(1 650 587)	(2 321 249)	(2 726 085)	(2 732 037)	(96 504)	(2 732 037)

1) A positive change indicates a reduction in cash balances

2) Surrenders by National Departments are unspent funds requested in previous financial years

3) Late requests are requisitions with regard to expenditure committed in previous years

NATIONAL REVENUE FUND
Schedule 5. Summary of cash flow for the month ended 31 March 2003

Description	2002/03			2001/02		
	Revised Estimate R'000	March R'000	Unaudited Fiscal year R'000	Preliminary Outcome R'000	March R'000	Unaudited Fiscal year R'000
Exchequer revenue 1)	275 745 495	29 701 864	278 223 362	247 995 162	27 300 554	247 995 162
Departmental requisitions 2)	291 822 908	27 802 755	292 791 422	264 077 305	23 500 382	264 077 305
Voted amounts	118 920 472	10 727 678	117 908 186	108 019 701	10 076 921	108 019 701
Statutory amounts	173 980 933	17 075 077	174 853 214	155 763 599	13 173 517	155 763 599
State debt cost net (excluding revaluation)	47 250 000	4 824 288	46 807 723	47 564 341	4 649 599	47 564 341
Transfer to provinces	123 456 849	11 891 096	124 456 849	105 336 460	8 270 923	105 336 460
Other	3 274 084	359 693	3 588 642	2 862 798	252 995	2 862 798
Standing appropriations	30 370	-	30 021	294 004	249 924	294 004
Provision for food relief	-	-	-	-	-	-
Projected under-spending	(1 108 867)	-	-	-	-	-
Difference between revenue and requisitions	(16 077 413)	1 899 109	(14 568 060)	(16 082 143)	3 800 192	(16 082 143)
Extraordinary receipts (net of bookprofit)	10 218 900	7 011 992	8 168 465	4 159 140	1 435 109	4 159 140
Extraordinary payments	(7 888 800)	(652 913)	(7 970 708)	(2 077 720)	-	(2 077 720)
Net borrowing requirement	(13 747 313)	8 258 191	(14 370 305)	(14 000 725)	5 235 298	(14 000 725)
Total borrowings	13 747 313	(8 258 191)	14 370 305	14 000 725	(5 235 298)	14 000 725
Domestic short term loans (net)	4 000 000	(738 200)	4 213 900	(7 966 600)	(1 505 170)	(7 966 600)
Domestic long term loans (net)	(3 123 500)	(5 833 282)	(3 017 384)	(8 871 446)	1 238 419	(9 871 446)
Loans issued for financing (net)	(6 984 700)	(2 485 986)	(6 940 266)	(12 067 955)	1 238 419	(12 087 955)
Loans issued (gross)	15 532 100	3 287 404	15 549 972	14 647 051	1 238 091	14 647 051
Discount	(344 200)	(22 702)	(355 025)	(323 320)	-	(323 320)
Redemptions	(21 642 300)	(5 750 688)	(21 624 942)	(22 433 418)	2 328	(22 433 418)
Buy-backs (net of bookprofit)	(510 300)	-	(510 271)	(3 978 266)	-	(3 978 266)
Loans issued for switches (net)	270 200	-	270 178	2 216 509	-	2 216 509
Loans issued (gross)	7 674 800	-	7 674 799	40 914 059	-	40 914 059
Discount	(246 500)	-	(246 488)	(1 675 321)	-	(1 675 321)
Loans switched (net of bookprofit)	(7 158 100)	-	(7 158 133)	(37 022 229)	-	(37 022 229)
Loans issued for extraordinary purposes (net)	3 571 000	(3 347 296)	3 652 704	-	-	-
Loans issued (gross)	7 571 000	652 704	7 652 704	-	-	-
Buy-backs	(4 000 000)	(4 000 000)	(4 000 000)	-	-	-
Foreign long term loans (net)	14 521 400	6 377	14 310 106	33 130 810	13 390	33 130 810
Loans issued for financing (net)	15 864 500	6 377	15 653 246	33 130 810	13 390	33 130 810
Loans issued	16 131 200	6 377	15 919 984	33 256 773	13 390	33 256 773
Discount	(226 000)	-	(226 016)	(57 097)	-	(57 097)
Redemptions	(29 400)	-	(29 385)	(22 134)	-	(22 134)
Revaluation	(11 300)	-	(11 337)	(46 732)	-	(46 732)
Loans issued due to \$1 500 MIL Dual Currency Term	(1 343 100)	-	(1 343 140)	-	-	-
Loan options (net)	13 944 697	-	13 944 657	-	-	-
Loans issued	-	-	-	-	-	-
Discount	-	-	-	-	-	-
Redemptions	(16 300 409)	-	(16 300 409)	-	-	-
Revaluation	1 012 612	-	1 012 612	-	-	-
Other movements	(1 650 587)	(1 693 086)	(1 136 317)	(1 292 039)	(4 981 937)	(1 292 039)
Surrender/Late request	1 400 000	184 876	1 548 910	2 052 026	401 260	2 052 026
Outstanding transfers from exchequer to PMG account	-	1 880	495 237	554 999	(2 629 788)	554 999
Changes in cash balances	(3 050 587)	(1 879 842)	(3 180 464)	(3 899 065)	(2 753 429)	(3 899 065)
Change in cash balances 3)	(3 050 587)	(1 879 842)	(3 180 464)	(3 899 065)	(2 753 429)	(3 899 065)
Opening balance	6 549 413	7 849 977	6 549 355	2 650 290	3 795 926	2 650 290
Exchequer account	-	150 444	493 005	539 688	255 781	539 688
Tax and loan accounts	-	7 699 533	6 056 350	2 110 602	3 540 145	2 110 602
Closing balance	9 600 000	9 729 819	9 729 819	6 549 355	6 549 355	6 549 355
Exchequer account	-	249 010	249 010	493 005	493 005	493 005
Tax and loan accounts	-	9 480 809	9 480 809	6 056 350	6 056 350	6 056 350

1) Revenue received into the Exchequer Account

2) Fund requisitions by departments

3) A positive change indicates a reduction in cash balances

REVENUE AND EXPENDITURE STATEMENT FOR THE 4th QUARTER ENDED 31 MARCH 2003
EASTERN CAPE PROVINCE

Details	2002/03						2001/02			# Q4 of 2001/02 to Q4 of 2002/03 % Growth
	Revised Budget 2002/03			Fourth Quarter #			Fourth Quarter #			
	Current R'000	Capital R'000	Total R'000	Current R'000	Capital R'000	Total R'000	Current R'000	Capital R'000	Total R'000	
Revenue										
Transfer from National Revenue Fund			22 714 117			6 988 927			22 714 117	32.4%
- Equitable share of Revenue			21 166 007			6 587 760			21 166 007	48.5%
- Conditional Grants			1 548 110			401 167			1 548 110	-52.3%
Own Revenue			400 000			202 057			526 053	-28.6%
Total Revenue			23 114 117			7 190 984			23 340 170	29.3%
Expenditure per department										
Office of the Premier	162 976	10 931	173 907	54 994	6 074	61 068	182 739	10 931	173 670	-23.2%
Provincial Legislature	68 821	6 242	75 063	18 178	2 298	20 474	67 213	7 159	74 372	-0.8%
Health	4 019 211	541 715	4 560 926	1 373 223	72 037	1 445 260	4 203 786	294 340	4 498 126	36.5%
Social Development	6 307 209	46 614	6 353 823	1 736 028	25 109	1 761 137	6 352 064	31 883	6 383 948	37.5%
Roads and Public Works	1 221 029	482 753	1 703 782	431 737	219 357	651 094	1 091 864	610 005	1 701 869	67.3%
Education	8 410 172	401 257	8 811 429	2 336 172	65 171	2 401 343	8 772 342	367 042	9 139 384	14.0%
Housing, Local Government and Traditional Affairs	425 546	795 526	1 221 072	570 378	(268 696)	301 682	823 916	19 803	843 719	18.6%
Agriculture and Land Affairs	559 473	-	559 473	166 435	9 442	175 877	550 998	14 072	565 070	-15.1%
Economic Affairs, Environment and Tourism	225 267	436 792	662 059	59 246	385 341	444 587	209 905	447 549	657 514	398.1%
Transport	317 511	5 564	323 075	84 548	(985)	83 563	238 639	4 247	242 886	23.8%
Provincial Treasury	203 086	9 299	212 385	50 791	2 136	52 927	137 622	7 064	144 686	28.4%
Sports, Recreation, Arts and Culture	216 890	9 969	226 859	69 497	379	69 876	206 231	3 101	209 332	60.7%
Safety and Liaison	9 855	-	9 855	2 183	-	2 183	6 764	-	6 764	17.9%
Total Expenditure	22 147 046	2 746 662	24 893 708	6 953 410	537 671	7 491 081	22 824 144	1 817 198	24 641 340	32.4%

Information submitted by: Mr Monde Tom Head Official: Provincial Treasury Eastern Cape Tel No: (040) 609-4888/9

CONDITIONAL GRANTS TRANSFERRED FROM NATIONAL DEPARTMENTS AND ACTUAL EXPENDITURE BY PROVINCE
4th QUARTER ENDED 31 MARCH 2003

EASTERN CAPE PROVINCE

Department	Division of Revenue Act, No. 5 of 2002	Government Gazette, 29 November 2002	Total Available 2002/03	Approved Payment Schedule	Transferred from National to Province	Provincial Actual Spending
	R'000	R'000	R'000	R'000	R'000	R'000
Agriculture						
Poverty Relief and Infrastructure Development	6 000	-	6 000	6 000	6 000	6 000
Education	77 390	1 893	79 283	79 283	79 283	40 107
Early Childhood Development	9 620	185	9 805	9 805	9 805	9 214
Financial management and quality enhancement	41 500	740	42 240	42 240	42 240	19 730
HIV/AIDS (Lifeskills Education)	26 270	968	27 238	27 238	27 238	11 163
Health	242 968	10 456	253 424	253 424	253 424	296 966
HIV/AIDS Health	21 130	7 123	28 253	28 253	28 253	24 758
Hospital Management and Quality Improvement	9 000	333	9 333	9 333	9 333	5 916
Hospital Revitalisation	81 000	3 000	84 000	84 000	84 000	130 828
Integrated Nutrition Programme	131 838	-	131 838	131 838	131 838	135 464
Cholera Epidemic	-	-	-	-	-	-
Pretoria Academic Hospital	-	-	-	-	-	-
Housing	581 485	9 519	591 004	591 004	591 004	475 029
Housing Subsidy	571 485	9 321	580 806	580 806	580 806	465 022
Human Resettlement and Redevelopment	10 000	198	10 198	10 198	10 198	10 007
Provincial and Local Government	58 466	-	58 466	58 466	58 466	68 709
Consolidated Municipal Infrastructure Programme	27 266	-	27 266	27 266	27 266	20 434
Local Government Support	31 200	-	31 200	31 200	31 200	48 275
Social Development	5 897	101	5 998	5 998	5 998	246 310
Financial management	1 200	-	1 200	1 200	1 200	1 200
HIV/AIDS (Community-based care)	4 697	101	4 798	4 798	4 798	4 798
Social Grant Arrears ¹	-	-	-	-	-	240 312
Sub-Total	972 206	21 969	994 175	994 175	994 175	1 133 121
Health	193 915	3 913	197 828	197 828	197 828	-
Health Professions Training and Development	70 169	1 880	72 049	72 049	72 049	-
National Tertiary Services	123 746	2 033	125 779	125 779	125 779	-
National Treasury	356 107	-	356 107	356 107	356 107	-
Flood Rehabilitation	70 000	-	70 000	70 000	70 000	-
Provincial Infrastructure	286 107	-	286 107	286 107	286 107	-
Sub-Total	550 022	3 913	553 935	553 935	553 935	-
Total	1 522 228	25 882	1 548 110	1 548 110	1 548 110	-

1) Funds regarding the Social Grant Arrears grant were transferred to provinces during the 2001/02 financial year.

2) Spending of these grants is subsumed in the spending of a range of programmes across provincial departments and therefore no reporting is required on these grants.

REVENUE AND EXPENDITURE STATEMENT FOR THE 4th QUARTER ENDED 31 MARCH 2003
FREE STATE PROVINCE

Details	Revised Budget 2002/03				2002/03 Fourth Quarter #			Unaudited Year to Date			2001/02 Fourth Quarter #			# Q4 of 2001/02 to Q4 of 2002/03 % Growth
	Current R'000	Capital R'000	Total R'000	Current R'000	Capital R'000	Total R'000	Current R'000	Capital R'000	Total R'000	Current R'000	Capital R'000	Total R'000		
Revenue														
Transfer from National Revenue Fund			9 270 225			2 450 071			9 270 225			2 199 577	11.4%	
- Equitable share of Revenue			8 259 646			2 102 664			8 269 646			1 735 288	26.4%	
- Conditional Grants			1 000 577			257 407			1 000 577			464 289	-44.6%	
Own Revenue			306 100			118 832			377 916			128 242	-5.9%	
Total Revenue			9 576 325			2 568 903			9 648 941			2 325 519	10.5%	
Expenditure per department														
Premier	96 036	739	96 777	33 808	771	34 579	60 800	1 693	62 493	14 444	210	14 654	136.0%	
Provincial Legislature	42 124	3 504	45 628	12 003	1 113	13 116	44 309	3 833	48 142	9 785	1 732	11 517	13.9%	
Tourism, Environmental and Economic Affairs	204 034	300	204 364	59 205	651	59 856	171 590	1 127	172 717	39 923	87	40 010	47.6%	
Finance and Expenditure	65 586	6 143	91 729	20 451	4 800	25 251	62 912	5 806	68 718	13 366	-	13 366	88.9%	
Health	2 194 613	48 238	2 242 852	572 830	12 429	585 259	2 146 566	43 642	2 190 228	567 976	34 590	602 558	-2.9%	
Education	3 466 620	255 497	3 722 117	895 790	46 396	946 186	3 527 317	99 329	3 626 646	774 897	42 973	817 869	15.7%	
Social Development	2 166 114	16 597	2 182 711	614 741	7 403	622 144	2 092 877	12 217	2 105 094	449 475	6 703	456 178	36.4%	
Local Government and Housing	120 971	375 676	496 647	28 238	163 712	191 948	83 762	328 171	411 933	112 692	151 289	156 335	22.6%	
Public Works, Roads and Transport	521 252	281 576	802 828	150 188	74 213	224 401	542 345	253 247	795 592	110 064	16 000	261 333	-14.1%	
Public Safety and Security	30 149	-	30 149	(10 743)	-	(10 743)	20 594	-	20 594	16 000	-	16 000	-164.7%	
Agriculture	160 264	49 625	209 889	44 259	6 622	50 821	134 276	12 013	146 291	31 524	2 476	34 000	49.8%	
Sports, Arts, Culture, Science and Technology	144 951	2 845	147 796	14 541	546	15 087	143 999	1 384	145 383	13 719	365	14 084	7.1%	
Contingency Reserve	174 603	-	174 603	-	-	-	-	-	-	-	-	-	-	-
Provincial Development Projects	-	50 000	50 000	-	-	-	-	-	-	-	-	-	-	-
Total Expenditure	9 407 269	1 090 941	10 498 230	2 438 348	318 856	2 757 205	9 051 359	762 432	9 813 791	2 065 098	353 087	2 438 695	13.1%	

Information submitted by: Mr Donald Balfour Head Official: Provincial Treasury Free State Tel No: (051) 403-3065

CONDITIONAL GRANTS TRANSFERRED FROM NATIONAL DEPARTMENTS AND ACTUAL EXPENDITURE BY PROVINCE
4th QUARTER ENDED 31 MARCH 2003
FREE STATE PROVINCE

Department	Division of Revenue Act, No. 5 of 2002 R'000	Government Gazette, 29 November 2002 R'000	Total Available 2002/03 R'000	Approved Payment Schedule R'000	Transferred from National to Province R'000	Provincial Actual Spending R'000
Agriculture						
Poverty Relief and Infrastructure Development	1 400	-	1 400	1 400	1 400	1 552
Education	26 354	441	26 795	26 795	26 795	27 717
Early Childhood Development	3 276	63	3 339	3 339	3 339	3 609
Financial management and quality enhancement	14 132	252	14 384	14 384	14 384	14 025
HIV/AIDS (Lifeskills Education)	8 946	126	9 072	9 072	9 072	10 083
Health	81 347	18 186	99 533	99 533	99 533	91 861
HIV/AIDS Health	13 953	4 704	18 657	18 657	18 657	18 657
Hospital Management and Quality Improvement	11 000	333	11 333	11 333	11 333	11 286
Hospital Revitalisation	17 000	12 000	29 000	29 000	29 000	29 000
Integrated Nutrition Programme	39 394	1 149	40 543	40 543	40 543	32 918
Cholera Epidemic	-	-	-	-	-	-
Pretoria Academic Hospital	-	-	-	-	-	-
Housing	290 597	4 732	295 329	295 329	295 329	193 067
Housing Subsidy	283 097	4 618	287 715	287 715	287 715	191 498
Human Resettlement and Redevelopment	7 500	114	7 614	7 614	7 614	1 569
Provincial and Local Government	35 059	-	35 059	35 059	35 059	34 358
Consolidated Municipal Infrastructure Programme	8 609	-	8 609	8 609	8 609	12 555
Local Government Support	26 450	-	26 450	26 450	26 450	21 803
Social Development	7 710	140	7 850	7 850	7 850	85 068
Financial management	1 200	-	1 200	1 200	1 200	-
HIV/AIDS (Community-based care)	6 510	140	6 650	6 650	6 650	8 858
Social Grant Arrears ¹	-	-	-	-	-	76 210
Sub-Total	442 467	23 499	465 967	465 967	465 967	433 623
Health	375 616	7 081	382 697	382 697	382 697	-
Health Professions Training and Development	88 192	2 360	90 552	90 552	90 552	-
National Tertiary Services	287 424	4 721	292 145	292 145	292 145	-
National Treasury	151 913	-	151 913	151 913	151 913	-
Flood Rehabilitation	58 000	-	58 000	58 000	58 000	-
Provincial Infrastructure	93 913	-	93 913	93 913	93 913	-
Sub-Total	527 529	7 081	534 610	534 610	534 610	-
Total	969 996	30 580	1 000 577	1 000 577	1 000 577	-

1) Funds regarding the Social Grant Arrears grant were transferred to provinces during the 2001/02 financial year.

2) Spending of these grants is subsumed in the spending of a range of programmes across provincial departments and therefore no reporting is required on these grants.

REVENUE AND EXPENDITURE STATEMENT FOR THE 4th QUARTER ENDED 31 MARCH 2003
GAUTENG PROVINCE

Details	2002/03						2001/02			# Q4 of 2001/02 to Q4 of 2002/03 % Growth			
	Revised Budget 2002/03			Fourth Quarter #			Fourth Quarter #						
	Current R'000	Capital R'000	Total R'000	Current R'000	Capital R'000	Total R'000	Current R'000	Capital R'000	Total R'000				
Revenue													
Transfer from National Revenue Fund			22 412 641			7 039 646			22 412 641	4 950 521	42.2%		
- Equitable share of Revenue			18 844 038			6 014 359			18 844 038	3 911 603	53.8%		
- Conditional Grants			3 568 603			1 025 287			3 568 603	1 038 918	-1.3%		
Own Revenue			1 327 905			422 293			1 448 276	432 004	-2.2%		
Total Revenue			23 740 546			7 461 939			23 860 917	5 382 525	38.6%		
Expenditure per department													
Office of the Premier	87 933	6 894	94 827	33 907	4 998	38 905	81 505	5 867	87 372	15 351	2 970	18 321	112.4%
Legislature	67 391	10 592	77 983	17 834	7 469	25 303	62 240	9 306	71 546	24 349	1 395	25 744	-1.7%
Finance and Economic Affairs	314 149	650 969	965 118	108 331	205 196	313 527	514 201	427 167	941 368	153 101	128 832	281 933	11.2%
Health	6 998 943	469 101	7 468 044	1 926 549	362 199	2 288 748	7 106 588	572 622	7 679 210	1 668 271	397 172	2 065 443	10.8%
Education	7 637 067	521 186	8 158 253	1 831 325	101 988	1 933 313	7 750 582	326 863	8 077 445	1 909 409	26 008	1 935 415	-0.1%
Social Services	3 877 520	11 417	3 888 937	1 087 725	6 110	1 093 835	3 963 709	10 796	3 974 505	827 399	10 742	838 140	30.5%
Housing	177 617	1 302 740	1 480 357	63 045	792 006	855 053	175 752	1 116 373	1 292 125	34 042	672 907	706 949	20.9%
Development, Planning and Local Government	159 706	750	160 456	94 318	1 239	95 557	148 360	1 544	149 934	44 306	-	44 306	115.7%
Transport and Public Works	815 818	582 380	1 398 198	96 209	20 706	116 916	745 060	699 299	1 444 358	258 749	(39 757)	216 981	-46.1%
Safety and Liaison	24 986	1 287	26 273	8 713	240	8 953	24 884	814	25 698	7 916	1 022	8 938	0.2%
Agriculture Conservation and Environment	190 396	44 261	234 657	38 358	34 367	72 725	169 301	37 466	206 767	35 151	310	35 461	105.1%
Sports, Recreation, Arts and Culture	74 387	40 640	115 027	25 220	36 384	61 604	71 986	38 925	110 911	23 231	12 766	36 017	71.0%
Gauteng Shared Services Centre	174 132	117 862	291 994	94 802	33 577	128 379	170 012	121 982	291 994	29 066	19 375	48 441	185.0%
Total Expenditure	20 600 045	3 769 079	24 369 124	5 426 336	1 606 481	7 032 818	20 984 210	3 369 024	24 353 234	5 028 340	1 233 760	6 262 100	12.3%

Information submitted by: Mr Pradeep Maharaj Head Official: Provincial Treasury Gauteng Tel No: (011) 355-6705

CONDITIONAL GRANTS TRANSFERRED FROM NATIONAL DEPARTMENTS AND ACTUAL EXPENDITURE BY PROVINCE
4th QUARTER ENDED 31 MARCH 2003
GAUTENG PROVINCE

Department	Division of Revenue Act, No. 5 of 2002	Government Gazette, 29 November 2002	Total Available 2002/03	Approved Payment Schedule	Transferred from National to Province	Provincial Actual Spending
	R'000	R'000	R'000	R'000	R'000	R'000
Agriculture						
Poverty Relief and Infrastructure Development	-	-	-	-	-	-
Education	51 453	881	52 314	52 314	52 314	56 819
Early Childhood Development	6 396	123	6 519	6 519	6 519	7 453
Financial management and quality enhancement	27 591	492	28 083	28 083	28 083	31 012
HIV/AIDS (Lifeskills Education)	17 466	246	17 712	17 712	17 712	18 154
Health	286 926	39 436	326 362	326 362	326 362	369 803
HIV/AIDS Health	23 253	7 840	31 093	31 093	31 093	16 113
Hospital Management and Quality Improvement	34 000	-	34 000	34 000	34 000	30 571
Hospital Revitalisation	105 000	30 000	135 000	135 000	135 000	135 983
Integrated Nutrition Programme	54 673	1 596	56 269	56 269	56 269	69 809
Cholera Epidemic	-	-	-	-	-	-
Pretoria Academic Hospital	70 000	-	70 000	70 000	70 000	117 327
Housing	824 940	13 526	838 466	838 466	838 466	1 076 781
Housing Subsidy	801 940	13 078	815 018	815 018	815 018	1 038 521
Human Resettlement and Redevelopment	23 000	448	23 448	23 448	23 448	38 260
Provincial and Local Government	28 744	-	28 744	28 744	28 744	18 018
Consolidated Municipal Infrastructure Programme	19 294	-	19 294	19 294	19 294	13 400
Local Government Support	9 450	-	9 450	9 450	9 450	4 618
Social Development	8 036	147	8 183	8 183	8 183	102 143
Financial management	1 200	-	1 200	1 200	1 200	1 352
HIV/AIDS (Community-based care)	6 836	147	6 983	6 983	6 983	6 983
Social Grant Arrears ¹	-	-	-	-	-	93 808
Sub-Total	1 200 099	53 970	1 254 069	1 254 069	1 254 069	1 623 364
Health	2 131 118	26 332	2 157 450	2 157 450	2 157 450	-
Health Professions Training and Development	528 137	-	528 137	528 137	528 137	-
National Tertiary Services	1 602 981	26 332	1 629 313	1 629 313	1 629 313	-
National Treasury	157 084	-	157 084	157 084	157 084	-
Flood Rehabilitation	-	-	-	-	-	-
Provincial Infrastructure	157 084	-	157 084	157 084	157 084	-
Sub-Total	2 288 202	26 332	2 314 534	2 314 534	2 314 534	-
Total	3 488 301	80 302	3 568 603	3 568 603	3 568 603	-

1) Funds regarding the Social Grant Arrears grant were transferred to provinces during the 2001/02 financial year.

2) Spending of these grants is subsumed in the spending of a range of programmes across provincial departments and therefore no reporting is required on these grants.

Details

Information submitted by: Mr Sipho Shabalala Head Official: Provincial Treasury KwaZulu-Natal Tel No: (033) 897-4556

1) Includes funds to reimburse the province for expenditure incurred relating to cholera in the previous financial year.

CONDITIONAL GRANTS TRANSFERRED FROM NATIONAL DEPARTMENTS AND ACTUAL EXPENDITURE BY PROVINCE
4th QUARTER ENDED 31 MARCH 2003
KWAZULU-NATAL PROVINCE

Department	Division of Revenue Act, No. 5 of 2002	Government Gazette, 29 November 2002	Total Available 2002/03	Approved Payment Schedule	Transferred from National to Province	Provincial Actual Spending
	R'000	R'000	R'000	R'000	R'000	R'000
Agriculture						
Poverty Relief and Infrastructure Development	4 000	-	4 000	4 000	4 000	5 877
Education	92 449	1 547	93 996	93 996	93 996	87 063
Early Childhood Development	11 492	221	11 713	11 713	11 713	10 193
Financial management and quality enhancement	49 575	884	50 459	50 459	50 459	46 467
HIV/AIDS (Lifeskills Education)	31 382	442	31 824	31 824	31 824	30 403
Health	280 731	185 102	465 833	465 833	465 833	529 348
HIV/AIDS Health	39 280	13 236	52 496	52 496	52 496	80 857
Hospital Management and Quality Improvement	19 000	-	19 000	19 000	19 000	19 607
Hospital Revitalisation	90 000	21 000	111 000	111 000	111 000	119 377
Integrated Nutrition Programme	132 471	3 866	136 337	136 337	136 337	162 507
Cholera Epidemic	-	147 000	147 000	147 000	147 000	147 000
Pretoria Academic Hospital	-	-	-	-	-	-
Housing	733 759	12 045	745 804	745 804	745 804	774 516
Housing Subsidy	708 759	11 559	720 318	720 318	720 318	754 863
Human Resettlement and Redevelopment	25 000	486	25 486	25 486	25 486	19 653
Provincial and Local Government	40 772	14 167	54 939	54 939	54 939	40 772
Consolidated Municipal Infrastructure Programme	14 322	14 167	28 489	28 489	28 489	14 322
Local Government Support	26 450	-	26 450	26 450	26 450	26 450
Social Development	9 662	182	9 844	9 844	9 844	155 561
Financial management	1 200	-	1 200	1 200	1 200	2 225
HIV/AIDS (Community-based care)	8 462	182	8 644	8 644	8 644	5 144
Social Grant Arrears ¹	-	-	-	-	-	148 192
Sub-Total	1 161 373	213 043	1 374 416	1 374 416	1 374 416	1 593 137
Health	641 174	12 156	653 330	653 330	653 330	-
Health Professions Training and Development	160 495	4 260	164 755	164 755	164 755	-
National Tertiary Services	480 679	7 896	488 575	488 575	488 575	-
National Treasury	331 123	-	331 123	331 123	331 123	-
Flood Rehabilitation	-	-	-	-	-	-
Provincial Infrastructure	331 123	-	331 123	331 123	331 123	-
Sub-Total	972 297	12 156	984 453	984 453	984 453	-
Total	2 133 670	225 199	2 358 869	2 358 869	2 358 869	-

1) Funds regarding the Social Grant Arrears grant were transferred to provinces during the 2001/02 financial year.

2) Spending of these grants is subsumed in the spending of a range of programmes across provincial departments and therefore no reporting is required on these grants.

3) Funds to reimburse the province for expenditure incurred relating to cholera in the previous financial year.

REVENUE AND EXPENDITURE STATEMENT FOR THE 4th QUARTER ENDED 31 MARCH 2003
LIMPOPO PROVINCE

LIMPOPO PROVINCE													
Details	#												
	2002/03						2001/02						# Q4 of 2001/02 to Q4 of 2002/03 % Growth
	Revised Budget 2002/03			Fourth Quarter #			Unaudited Year to Date			Fourth Quarter #			
	Current R'000	Capital R'000	Total R'000	Current R'000	Capital R'000	Total R'000	Current R'000	Capital R'000	Total R'000	Current R'000	Capital R'000	Total R'000	
Revenue													
Transfer from National Revenue Fund			17 992 634			4 758 214			17 981 487			3 828 074	24.3%
- Equitable share of Revenue			16 692 165			4 422 002			16 692 165			3 463 785	27.7%
- Conditional Grants			1 300 469			336 212			1 289 322			364 289	-7.7%
Own Revenue			359 152			127 704			430 358			82 600	54.6%
Total Revenue			18 351 786			4 885 918			18 411 844			3 910 674	24.9%
Expenditure per department													
Office of the Premier	151 483	2 109	153 592	35 573	823	36 396	149 239	2 416	151 655	23 949	2 901	26 850	35.6%
Education	7 343 659	248 364	7 592 023	1 944 094	80 036	2 024 130	7 187 604	191 536	7 379 140	1 783 055	52 239	1 835 294	10.3%
Agriculture	704 621	41 410	746 031	196 284	17 000	213 284	692 662	25 332	717 994	136 742	6 826	143 568	48.5%
Local Government and Housing	383 453	449 969	813 422	120 673	193 182	313 855	330 497	436 630	767 327	67 340	161 184	228 524	37.3%
Finance, Economic and Development	647 897	133 013	780 910	161 006	18 249	179 255	635 115	129 602	764 717	206 319	18 743	225 062	-20.4%
Sport, Arts and Culture	39 167	970	40 137	9 281	1 566	10 847	37 068	2 212	39 278	7 706	357	8 063	34.5%
Health	2 854 406	291 368	3 145 774	809 215	143 872	953 087	2 875 119	291 964	3 167 083	616 993	66 685	683 678	39.4%
Welfare	4 370 647	28 832	4 399 479	1 083 122	13 587	1 096 708	4 267 103	16 937	4 284 040	836 775	3 313	840 088	30.5%
Safety and Security	10 548	544	11 092	2 627	86	2 713	9 599	426	10 025	1 735	(120)	1 615	68.0%
Public Works	662 016	398 640	1 060 556	263 719	140 106	403 825	750 542	392 161	1 142 703	149 510	144 504	294 014	37.3%
Transport	338 787	7 155	345 942	102 655	2 583	105 238	333 904	8 287	342 191	73 167	1 933	75 100	40.1%
Legislature	48 348	2 976	51 324	12 288	3 594	15 860	43 455	4 521	47 976	7 984	881	8 865	78.9%
Total Expenditure	17 535 032	1 605 250	19 140 282	4 740 495	614 684	5 355 179	17 311 905	1 502 224	18 814 129	3 911 275	459 446	4 370 721	22.5%

Information submitted by: Mr MB Mphahlele Head Official: Provincial Treasury Limpopo Tel No: (015) 291-5366

CONDITIONAL GRANTS TRANSFERRED FROM NATIONAL DEPARTMENTS AND ACTUAL EXPENDITURE BY PROVINCE
4th QUARTER ENDED 31 MARCH 2003
LIMPOPO PROVINCE

Department	Division of Revenue Act, No. 5 of 2002	Government Gazette, 29 November 2002	Total Available 2002/03	Approved Payment Schedule	Transferred from National to Province	Provincial Actual Spending
	R'000	R'000	R'000	R'000	R'000	R'000
Agriculture						
Poverty Relief and Infrastructure Development	5 000	-	5 000	5 000	5 000	5 000
Education	65 676	1 104	66 780	66 780	55 633	60 253
Early Childhood Development	8 164	157	8 321	8 321	8 321	8 482
Financial management and quality enhancement	35 218	628	35 846	35 846	35 846	27 865
HIV/AIDS (Lifeskills Education)	22 294	319	22 613	22 613	11 466	23 906
Health	222 403	35 611	258 014	258 014	258 014	278 429
HIV/AIDS Health	15 371	5 183	20 554	20 554	20 554	18 517
Hospital Management and Quality Improvement	9 000	333	9 333	9 333	9 333	6 144
Hospital Revitalisation	92 000	27 000	119 000	119 000	119 000	136 220
Integrated Nutrition Programme	106 032	3 095	109 127	109 127	109 127	117 548
Cholera Epidemic	-	-	-	-	-	-
Pretoria Academic Hospital	-	-	-	-	-	-
Housing	392 767	6 445	399 212	399 212	399 212	427 413
Housing Subsidy	381 767	6 228	387 995	387 995	387 995	427 413
Human Resettlement and Redevelopment	11 000	217	11 217	11 217	11 217	-
Provincial and Local Government	26 001	-	26 001	26 001	26 001	20 684
Consolidated Municipal Infrastructure Programme	10 901	-	10 901	10 901	10 901	13 304
Local Government Support	15 100	-	15 100	15 100	15 100	7 380
Social Development	4 269	66	4 335	4 335	4 335	306 278
Financial management	1 200	-	1 200	1 200	1 200	1 200
HIV/AIDS (Community-based care)	3 069	66	3 135	3 135	3 135	3 135
Social Grant Arrears ¹	-	-	-	-	-	301 943
Sub-Total	716 116	43 226	759 342	759 342	748 195	1 098 057
Health	78 951	1 657	80 608	80 608	80 608	-
Health Professions Training and Development	34 113	920	35 033	35 033	35 033	-
National Tertiary Services	44 838	737	45 575	45 575	45 575	-
National Treasury	460 519	-	460 519	460 519	460 519	-
Flood Rehabilitation	182 000	-	182 000	182 000	182 000	-
Provincial Infrastructure	278 519	-	278 519	278 519	278 519	-
Sub-Total	539 470	1 657	541 127	541 127	541 127	-
Total	1 255 586	44 883	1 300 469	1 300 469	1 289 322	-

1) Funds regarding the Social Grant Arrears grant were transferred to provinces during the 2001/02 financial year.

2) Spending of these grants is subsumed in the spending of a range of programmes across provincial departments and therefore no reporting is required on these grants.

REVENUE AND EXPENDITURE STATEMENT FOR THE 4th QUARTER ENDED 31 MARCH 2003
MPUMALANGA PROVINCE

Details	Revised Budget 2002/03				2002/03				2001/02				# to Q4 of 2001/02 to Q4 of 2002/03 % Growth
	Current R'000		Capital R'000		Current R'000		Capital R'000		Current R'000		Capital R'000		
	Total R'000	Capital R'000	Total R'000	Capital R'000	Total R'000	Capital R'000	Total R'000	Capital R'000	Total R'000	Capital R'000			
Revenue													
Transfer from National Revenue Fund	9 413 676		2 692 573		9 413 676		2 692 573				2 475 666		4.7%
- Equitable share of Revenue	8 705 480		2 300 153		8 705 480		2 300 153				1 779 192		20.3%
- Conditional Grants	708 216		202 420		708 216		202 420				696 474		-58.0%
Own Revenue	195 000		142 333		195 000		142 333				97 200		46.4%
Total Revenue	9 808 676		2 734 906		9 808 676		2 734 906				2 572 686		6.3%
Expenditure per department													
Premier	89 210	11 761	24 232	8 749	89 983	10 239	100 222	3 558	18 774	3 558	22 332	47.7%	
Finance and Economic Affairs	320 417	2 842	105 247	19	235 657	1 376	237 235		84 894	3 478	88 372	20.2%	
Local Government and Traffic Control	127 303	60 272	75 153		182 678		182 678		28 904	53 881	82 685	-0.1%	
Agriculture, Conservation and Environment	375 425	7 920	99 185	5 161	374 600	8 673	104 347		126 756	646	127 402	-18.1%	
Education	3 736 734	149 865	909 349	42 768	3 731 761	154 071	3 885 832		789 984	47 265	837 249	13.7%	
Public Works, Roads and Transport	425 791	344 909	113 333	89 428	423 545	347 115	770 660		105 603	122 453	228 056	-11.1%	
Safety and Security	32 200	595	10 144		32 563		32 563		8 842		8 842	14.7%	
Social Services, Population and Development	2 082 725	14 171	2 098 896	8 768	2 024 720	15 579	2 040 289		399 700	4 098	402 789	37.6%	
Health	1 648 435	94 470	488 875	35 219	1 598 068	90 387	1 688 455		406 731	38 750	445 481	17.6%	
Housing and Land Administration	59 924	306 368	366 292	131 979	52 821	298 201	351 022		8 071	173 964	182 035	-20.3%	
Legislature	48 853	900	13 618		45 819	420	46 239		10 818		10 818	25.9%	
Sports, Recreation, Arts and Culture	55 160	8 135	16 633	3 611	53 091	4 564	57 665		9 653	1 300	10 953	84.8%	
Total Expenditure	9 002 277	1 001 848	2 415 475	325 700	8 845 595	930 627	9 776 133		1 997 630	448 394	2 447 024	12.0%	

Information submitted by: Mr RS Tshuludu Head Official: Provincial Treasury Ngumalanga Tel No: (013) 786-4245

CONDITIONAL GRANTS TRANSFERRED FROM NATIONAL DEPARTMENTS AND ACTUAL EXPENDITURE BY PROVINCE
4th QUARTER ENDED 31 MARCH 2003
MPUMALANGA PROVINCE

Department	Division of Revenue Act, No. 5 of 2002	Government Gazette, 29 November 2002	Total Available 2002/03	Approved Payment Schedule	Transferred from National to Province	Provincial Actual Spending
	R'000	R'000	R'000	R'000	R'000	R'000
Agriculture						
Poverty Relief and Infrastructure Development	2 000	-	2 000	2 000	2 000	3 309
Education	30 537	511	31 048	31 048	31 048	34 552
Early Childhood Development	3 796	73	3 869	3 869	3 869	3 118
Financial management and quality enhancement	16 375	292	16 667	16 667	16 667	17 985
HIV/AIDS (Lifeskills Education)	10 366	146	10 512	10 512	10 512	13 449
Health	108 334	8 594	116 928	116 928	116 928	94 884
HIV/AIDS Health	15 606	5 261	20 867	20 867	20 867	7 946
Hospital Management and Quality Improvement	8 000	333	8 333	8 333	8 333	1 585
Hospital Revitalisation	45 000	3 000	48 000	48 000	48 000	44 397
Integrated Nutrition Programme	39 728	-	39 728	39 728	39 728	40 956
Cholera Epidemic	-	-	-	-	-	-
Pretoria Academic Hospital	-	-	-	-	-	-
Housing	248 038	4 024	252 062	252 062	252 062	246 292
Housing Subsidy	242 038	3 904	245 942	245 942	245 942	245 942
Human Resettlement and Redevelopment	6 000	120	6 120	6 120	6 120	350
Provincial and Local Government	18 749	-	18 749	18 749	18 749	18 055
Consolidated Municipal Infrastructure Programme	5 999	-	5 999	5 999	5 999	5 305
Local Government Support	12 750	-	12 750	12 750	12 750	12 750
Social Development	8 128	149	8 277	8 277	8 277	47 078
Financial management	1 200	-	1 200	1 200	1 200	600
HIV/AIDS (Community-based care)	6 928	149	7 077	7 077	7 077	7 102
Social Grant Arrears ¹	-	-	-	-	-	39 376
Sub-Total	415 786	13 278	429 064	429 064	429 064	444 170
Health	68 760	1 431	70 191	70 191	70 191	-
Health Professions Training and Development	30 347	800	31 147	31 147	31 147	-
National Tertiary Services	38 413	631	39 044	39 044	39 044	-
National Treasury	208 961	-	208 961	208 961	208 961	-
Flood Rehabilitation	90 000	-	90 000	90 000	90 000	-
Provincial Infrastructure	118 961	-	118 961	118 961	118 961	-
Sub-Total	277 721	1 431	279 152	279 152	279 152	-
Total	693 507	14 709	708 216	708 216	708 216	-

1) Funds regarding the Social Grant Arrears grant were transferred to provinces during the 2001/02 financial year.

2) Spending of these grants is subsumed in the spending of a range of programmes across provincial departments and therefore no reporting is required on these grants.

REVENUE AND EXPENDITURE STATEMENT FOR THE 4th QUARTER ENDED 31 MARCH 2003
NORTHERN CAPE PROVINCE

Details	Revised Budget 2002/03			2002/03 Fourth Quarter #			2001/02 Fourth Quarter #			# Q4 of 2001/02 to Q4 of 2002/03 % Growth
	Current R'000	Capital R'000	Total R'000	Current R'000	Capital R'000	Total R'000	Current R'000	Capital R'000	Total R'000	
Revenue										
Transfer from National Revenue Fund			3 270 087			855 114			720 056	18.8%
- Equitable share of Revenue			3 000 488			791 515			624 029	26.8%
- Conditional Grants			269 599			63 589			96 027	-33.8%
Own Revenue			87 187			19 738			47 236	-58.2%
Total Revenue			3 357 274			874 852			767 282	14.0%
Expenditure per department										
Premier	58 730	2 214	60 944	22 201	688	22 887	12 543	19	12 562	82.0%
Legislature	31 071	8 133	39 204	7 644	8 275	15 919	10 338	1	10 339	54.0%
Provincial Safety and Liaison	7 061	440	7 501	2 469	91	2 560	1 556	-	1 556	64.5%
Education	1 155 442	14 941	1 170 383	315 536	34 203	349 739	282 974	812	283 786	23.2%
Transport, Roads and Public Works	161 006	159 101	320 107	43 105	33 444	76 550	55 019	45 196	100 215	-23.5%
Economic Affairs and Tourism	38 681	370	39 051	9 911	174	10 085	6 691	158	6 849	32.6%
Sport, Arts and Culture	32 764	1 590	34 354	9 005	20	9 025	9 421	-	9 421	-4.2%
Finance	109 889	163	110 052	18 052	3 868	21 920	8 739	76	8 815	82.1%
Housing and Local Government	78 852	105 091	183 943	37 446	20 170	57 616	24 811	7 597	32 408	27.5%
Health	549 671	49 212	598 883	111 530	307	111 837	105 557	3 292	108 879	21.0%
Social Services and Population Development	823 245	7 456	830 701	234 928	240	235 168	183 122	314	183 436	28.2%
Agriculture, Land Reform, Environment and Conservation	67 962	1 391	69 353	19 074	-	19 074	61 867	-	61 867	98.5%
Reconstruction and Development Programme										
Total Expenditure	3 114 394	350 502	3 464 896	827 902	101 458	929 360	772 289	58 109	830 378	-11.9%

Information submitted by: Mr Bernard Makape Head Office: Provincial Treasury Northern Cape Tel No: (053) 850-8359

CONDITIONAL GRANTS TRANSFERRED FROM NATIONAL DEPARTMENTS AND ACTUAL EXPENDITURE BY PROVINCE
4th QUARTER ENDED 31 MARCH 2003
NORTHERN CAPE PROVINCE

Department	Division of Revenue Act, No. 5 of 2002	Government Gazette, 29 November 2002	Total Available 2002/03	Approved Payment Schedule	Transferred from National to Province	Provincial Actual Spending
	R'000	R'000	R'000	R'000	R'000	R'000
Agriculture						
Poverty Relief and Infrastructure Development	1 300	-	1 300	1 300	1 300	2 259
Education	7 948	135	8 083	8 083	8 083	8 922
Early Childhood Development	988	19	1 007	1 007	1 007	1 144
Financial management and quality enhancement	4 262	76	4 338	4 338	4 338	4 919
HIV/AIDS (Lifeskills Education)	2 698	40	2 738	2 738	2 738	2 859
Health	32 823	17 558	50 381	50 381	50 381	50 964
HIV/AIDS Health	5 727	1 930	7 657	7 657	7 657	7 657
Hospital Management and Quality Improvement	7 000	334	7 334	7 334	7 334	7 334
Hospital Revitalisation	10 000	15 000	25 000	25 000	25 000	25 000
Integrated Nutrition Programme	10 096	294	10 390	10 390	10 390	10 973
Cholera Epidemic	-	-	-	-	-	-
Pretoria Academic Hospital	-	-	-	-	-	-
Housing	78 309	1 328	79 637	79 637	79 637	49 852
Housing Subsidy	75 809	1 281	77 090	77 090	77 090	49 852
Human Resettlement and Redevelopment	2 500	47	2 547	2 547	2 547	-
Provincial and Local Government	18 059	2 500	20 559	20 559	20 559	18 059
Consolidated Municipal Infrastructure Programme	2 509	1 000	3 509	3 509	3 509	2 509
Local Government Support	15 550	1 500	17 050	17 050	17 050	15 550
Social Development	3 804	56	3 860	3 860	3 860	21 642
Financial management	1 200	-	1 200	1 200	1 200	636
HIV/AIDS (Community-based care)	2 604	56	2 660	2 660	2 660	2 706
Social Grant Arrears ¹	-	-	-	-	-	18 300
Sub-Total	142 243	21 577	163 821	163 821	163 821	151 698
Health	51 635	1 136	52 771	52 771	52 771	-
Health Professions Training and Development	27 573	740	28 313	28 313	28 313	-
National Tertiary Services	24 062	396	24 458	24 458	24 458	-
National Treasury	52 997	-	52 997	52 997	52 997	-
Flood Rehabilitation	-	-	-	-	-	-
Provincial Infrastructure	52 997	-	52 997	52 997	52 997	-
Sub-Total	104 632	1 136	105 768	105 768	105 768	-
Total	246 875	22 713	269 589	269 589	269 589	-

1) Funds regarding the Social Grant Arrears grant were transferred to provinces during the 2001/02 financial year.

2) Spending of these grants is subsumed in the spending of a range of programmes across provincial departments and therefore no reporting is required on these grants.

REVENUE AND EXPENDITURE STATEMENT FOR THE 4th QUARTER ENDED 31 MARCH 2003
NORTH WEST PROVINCE

Details	2002/03									# Q4 of 2001/02 to Q4 of 2002/03 % Growth					
	Revised Budget 2002/03			Fourth Quarter #			Unaudited Year to Date				2001/02 Fourth Quarter #				
	Current R'000	Capital R'000	Total R'000	Current R'000	Capital R'000	Total R'000	Current R'000	Capital R'000	Total R'000		Current R'000	Capital R'000	Total R'000		
Revenue															
Transfer from National Revenue Fund			11 032 224			2 879 953			11 032 224			2 411 443		19.4%	
- Equitable share of Revenue			10 327 837			2 733 304			10 327 837			2 163 871		26.3%	
- Conditional Grants			704 387			148 649			704 387			247 572		-40.8%	
Own Revenue			271 659			73 174			286 840			84 158		14.1%	
Total Revenue			11 303 883			2 953 127			11 331 064			2 475 601		19.3%	
Expenditure per department															
Office of the Premier	136 349	2 009	138 358	37 806	1 046	38 852	114 764	2 091	116 855	5 822	489	6 311		515.8%	
Provincial Legislature	39 089	1 100	40 189	9 027	208	9 235	38 703	1 305	40 008	8 885	809	9 694		-4.7%	
Health	1 766 465	207 494	1 973 959	532 288	52 890	585 188	1 904 350	107 823	2 012 173	485 379	36 294	521 673		12.2%	
Safety and Liaison	9 413	359	9 772	3 201	205	3 406	8 753	464	9 217	2 465	130	2 595		31.3%	
Economic Development and Tourism	103 452	11 352	114 804	21 749	5 784	27 533	98 418	11 337	109 755	32 108	4 120	36 228		-24.0%	
Finance	187 870	19 647	207 517	49 380	13 689	63 069	148 222	32 846	181 068	93 900	7 613	101 513		-37.9%	
Education	4 245 027	135 356	4 380 383	1 047 973	58 198	1 106 171	4 223 618	153 765	4 377 383	988 763	36 571	1 023 334		8.1%	
Developmental Local Government and Housing	134 863	379 892	514 755	44 679	143 260	187 939	128 756	372 922	501 678	43 297	51 154	94 451		99.0%	
Transport	559 029	33 003	592 032	208 462	14 543	223 005	552 480	20 254	572 734	216 698	15 279	231 977		-3.9%	
Roads and Public Works	436 555	199 950	636 505	95 855	111 103	206 958	428 146	203 921	632 067	-	-	-		-	
Social Services, Arts, Culture and Sport	2 579 112	33 384	2 612 496	596 291	17 353	613 644	2 643 673	29 442	2 673 115	454 104	6 813	460 917		33.1%	
Agriculture, Conservation and Environment	286 185	7 578	293 763	77 896	1 744	79 640	284 911	6 542	291 453	63 473	6 784	70 257		13.4%	
Contingency Reserve	2 292	3 408	5 700	-	-	-	-	-	-	-	-	-		-	
Total Expenditure	10 485 681	1 034 532	11 520 213	2 724 617	420 023	3 144 640	10 574 794	942 712	11 517 506	2 414 352	167 418	2 581 770		21.8%	

Information submitted by: Mr Phisoas Tjile Head Official: Provincial Treasury North West Tel No: (018) 387-4440/1

- 1) The Vote Traditional and Corporate Affairs was incorporated with Office of the Premier as from the 2002/03 Adjustments Estimate.
 2) The Votes Transport and Public Works, Roads were combined as one vote in the 2001/02 financial year.

CONDITIONAL GRANTS TRANSFERRED FROM NATIONAL DEPARTMENTS AND ACTUAL EXPENDITURE BY PROVINCE
4th QUARTER ENDED 31 MARCH 2003
NORTH WEST PROVINCE

Department	Division of Revenue Act, No. 5 of 2002	Government Gazette, 29 November 2002	Total Available 2002/03	Approved Payment Schedule	Transferred from National to Province	Provincial Actual Spending
	R'000	R'000	R'000	R'000	R'000	R'000
Agriculture						
Poverty Relief and Infrastructure Development	3 000	-	3 000	3 000	3 000	3 000
Education	33 466	560	34 026	34 026	34 026	37 397
Early Childhood Development	4 160	80	4 240	4 240	4 240	2 122
Financial management and quality enhancement	17 946	320	18 266	18 266	18 266	25 823
HIV/AIDS (Lifeskills Education)	11 360	160	11 520	11 520	11 520	9 452
Health	111 539	8 104	119 643	119 643	119 643	126 648
HIV/AIDS Health	14 149	4 770	18 919	18 919	18 919	23 567
Hospital Management and Quality Improvement	8 000	334	8 334	8 334	8 334	6 513
Hospital Revitalisation	50 000	3 000	53 000	53 000	53 000	52 806
Integrated Nutrition Programme	39 390	-	39 390	39 390	39 390	43 762
Cholera Epidemic	-	-	-	-	-	-
Pretoria Academic Hospital	-	-	-	-	-	-
Housing	308 001	5 049	313 050	313 050	313 050	336 077
Housing Subsidy	302 001	4 929	306 930	306 930	306 930	327 562
Human Resettlement and Redevelopment	6 000	120	6 120	6 120	6 120	8 515
Provincial and Local Government	23 771	1 500	25 271	25 271	25 271	43 164
Consolidated Municipal Infrastructure Programme	7 221	-	7 221	7 221	7 221	6 978
Local Government Support	16 550	1 500	18 050	18 050	18 050	36 186
Social Development	6 548	115	6 663	6 663	6 663	74 142
Financial management	1 200	-	1 200	1 200	1 200	593
HIV/AIDS (Community-based care)	5 348	115	5 463	5 463	5 463	10 232
Social Grant Arrears ¹	-	-	-	-	-	63 317
Sub-Total	486 325	15 328	501 653	501 653	501 653	620 428
Health	66 247	1 401	67 648	67 648	67 648	-
Health Professions Training and Development	32 058	840	32 898	32 898	32 898	-
National Tertiary Services	34 189	561	34 750	34 750	34 750	-
National Treasury	135 086	-	135 086	135 086	135 086	-
Flood Rehabilitation	-	-	-	-	-	-
Provincial Infrastructure	135 086	-	135 086	135 086	135 086	-
Sub-Total	201 333	1 401	202 734	202 734	202 734	-
Total	687 658	16 729	704 387	704 387	704 387	-

1) Funds regarding the Social Grant Arrears grant were transferred to provinces during the 2001/02 financial year.

2) Spending of these grants is subsumed in the spending of a range of programmes across provincial departments and therefore no reporting is required on these grants.

REVENUE AND EXPENDITURE STATEMENT FOR THE 4th QUARTER ENDED 31 MARCH 2003
WESTERN CAPE PROVINCE

Details	2002/03						2001/02			# Q4 of 2001/02 to Q4 of 2002/03 % Growth				
	Revised Budget 2002/03			Fourth Quarter #			Unaudited Year to Date				Fourth Quarter #			
	Current R'000	Capital R'000	Total R'000	Current R'000	Capital R'000	Total R'000	Current R'000	Capital R'000	Total R'000		Current R'000	Capital R'000	Total R'000	
Revenue														
Transfer from National Revenue Fund			13 314 411			3 524 391			13 314 411			3 024 142		16.5%
- Equitable share of Revenue			11 294 254			2 995 888			11 294 254			2 407 642		24.4%
- Conditional Grants			2 020 157			528 503			2 020 157			616 500		-14.3%
Own Revenue			834 036			376 138			1 087 482			403 457		-6.8%
Total Revenue			14 148 447			3 900 529			14 401 893			3 427 599		13.8%
Expenditure per department														
Premier, Director-General and Corporate Services	215 627	185 194	400 821	56 737	34 435	91 172	203 383	125 861	329 264	68 722	52 357	121 079		-24.7%
Provincial Parliament	36 089	893	36 982	7 893	302	8 195	34 368	694	35 062	6 880	408	7 288		12.5%
Finance	65 617	3 957	69 584	14 400	4 728	19 128	50 958	5 298	56 266	12 658	1 107	13 765		39.0%
Community Safety	113 210	5 749	118 959	34 070	13 484	47 554	103 730	15 039	118 769	28 096	3 836	31 932		48.9%
Education	4 636 191	42 058	4 678 249	1 164 439	8 224	1 172 663	4 595 103	37 527	4 632 630	1 039 521	30 370	1 069 891		9.6%
Health	3 811 532	60 104	3 871 636	933 934	20 094	954 028	3 820 887	48 654	3 869 541	850 094	24 863	874 977		9.0%
Social Services and Poverty Alleviation	3 208 972	3 898	3 212 870	776 121	2 045	778 166	3 135 166	3 203	3 138 369	793 755	3 348	797 103		-2.4%
Housing	79 041	404 840	483 881	16 748	105 171	121 917	73 245	384 984	458 229	36 391	53 534	88 925		35.6%
Environmental Affairs and Development Planning	139 932	1 269	141 201	36 815	2 453	39 268	136 322	3 528	139 850	50 228	7 088	57 314		-31.5%
Transport and Public Works	667 080	712 706	1 379 786	265 691	242 243	507 934	654 814	649 977	1 304 791	187 536	166 921	354 457		43.3%
Agriculture	120 014	45 403	165 417	33 709	5 570	39 279	119 735	38 318	158 053	-	-	-		-
Local Government	53 980	1 610	55 590	18 858	1 253	20 111	36 007	1 397	37 404	-	-	-		-
Economic Development and Tourism	38 761	78 282	117 043	16 310	20 023	36 333	33 279	78 060	111 339	-	-	-		-
Cultural Affairs and Sport	78 981	5 717	84 688	33 928	3 037	36 965	78 576	5 770	84 346	-	-	-		-
Total Expenditure	13 265 027	1 551 690	14 816 717	3 409 651	463 062	3 872 713	13 075 583	1 398 330	14 473 913	3 073 879	343 850	3 417 729		13.3%

Information submitted by: Dr JC Stegmann Head Official: Provincial Treasury Western Cape Tel No: (021) 463-4709

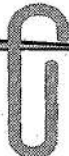
- 1) The Votes Transport, Public Works and Economic Development, Tourism, Agriculture were combined as one vote in the 2001/02 financial year.
2) The Votes Planning, Local Government and Housing; Environmental and Cultural Affairs and Sport; Economic Development, Tourism and Agriculture split due to the restructuring of departments from 01 August 2002.

CONDITIONAL GRANTS TRANSFERRED FROM NATIONAL DEPARTMENTS AND ACTUAL EXPENDITURE BY PROVINCE
4th QUARTER ENDED 31 MARCH 2003
WESTERN CAPE PROVINCE

Department	Division of Revenue Act, No. 5 of 2002	Government Gazette, 29 November 2002	Total Available 2002/03	Approved Payment Schedule	Transferred from National to Province	Provincial Actual Spending
	R'000	R'000	R'000	R'000	R'000	R'000
Agriculture						
Poverty Relief and Infrastructure Development	1 300	-	1 300	1 300	1 300	1 666
Education	33 047	553	33 600	33 600	33 600	41 616
Early Childhood Development	4 108	79	4 187	4 187	4 187	2 734
Financial management and quality enhancement	17 721	316	18 037	18 037	18 037	22 877
HIV/AIDS (Lifeskills Education)	11 218	158	11 376	11 376	11 376	16 005
Health	86 549	17 953	104 502	104 502	104 502	105 962
HIV/AIDS Health	8 760	2 953	11 713	11 713	11 713	11 519
Hospital Management and Quality Improvement	19 000	-	19 000	19 000	19 000	19 000
Hospital Revitalisation	30 000	15 000	45 000	45 000	45 000	46 786
Integrated Nutrition Programme	28 789	-	28 789	28 789	28 789	28 657
Cholera Epidemic	-	-	-	-	-	-
Pretoria Academic Hospital	-	-	-	-	-	-
Housing	385 778	6 332	392 110	392 110	392 110	353 984
Housing Subsidy	372 778	6 082	378 860	378 860	378 860	348 180
Human Resettlement and Redevelopment	13 000	250	13 250	13 250	13 250	5 804
Provincial and Local Government	24 857	486	25 343	25 343	25 343	23 744
Consolidated Municipal Infrastructure Programme	8 357	486	8 843	8 843	8 843	8 368
Local Government Support	16 500	-	16 500	16 500	16 500	15 376
Social Development	3 246	44	3 290	3 290	3 290	57 141
Financial management	1 200	-	1 200	1 200	1 200	1 200
HIV/AIDS (Community-based care)	2 046	44	2 090	2 090	2 090	2 084
Social Grant Arrears ¹	-	-	-	-	-	53 857
Sub-Total	534 777	25 368	560 145	560 145	560 145	584 113
Health	1 338 674	25 128	1 363 802	1 363 802	1 363 802	-
Health Professions Training and Development	308 164	8 200	316 364	316 364	316 364	-
National Tertiary Services	1 030 510	16 928	1 047 438	1 047 438	1 047 438	-
National Treasury	96 210	-	96 210	96 210	96 210	-
Flood Rehabilitation	-	-	-	-	-	-
Provincial Infrastructure	96 210	-	96 210	96 210	96 210	-
Sub-Total	1 434 884	25 128	1 460 012	1 460 012	1 460 012	-
Total	1 969 661	50 496	2 020 157	2 020 157	2 020 157	-

1) Funds regarding the Social Grant Arrears grant were transferred to provinces during the 2001/02 financial year.

2) Spending of these grants is subsumed in the spending of a range of programmes across provincial departments and therefore no reporting is required on these grants.



*Looking for back copies and out of print issues of
the Government Gazette and Provincial Gazettes?*

The National Library of SA has them!

Let us make your day with the information you need ...

National Library of SA, Pretoria Division

PO Box 397

0001 PRETORIA

Tel.: (012) 321-8931, Fax: (012) 325-5984

E-mail: infodesk@nlsa.ac.za



*Soek u ou kopieë en uit druk uitgawes van die
Staatshoerant en Provinsiale Koerante?*

Die Nasionale Biblioteek van SA het hulle!

Met ons hoef u nie te sukkel om inligting te bekom nie ...

Nasionale Biblioteek van SA, Pretoria Divisie

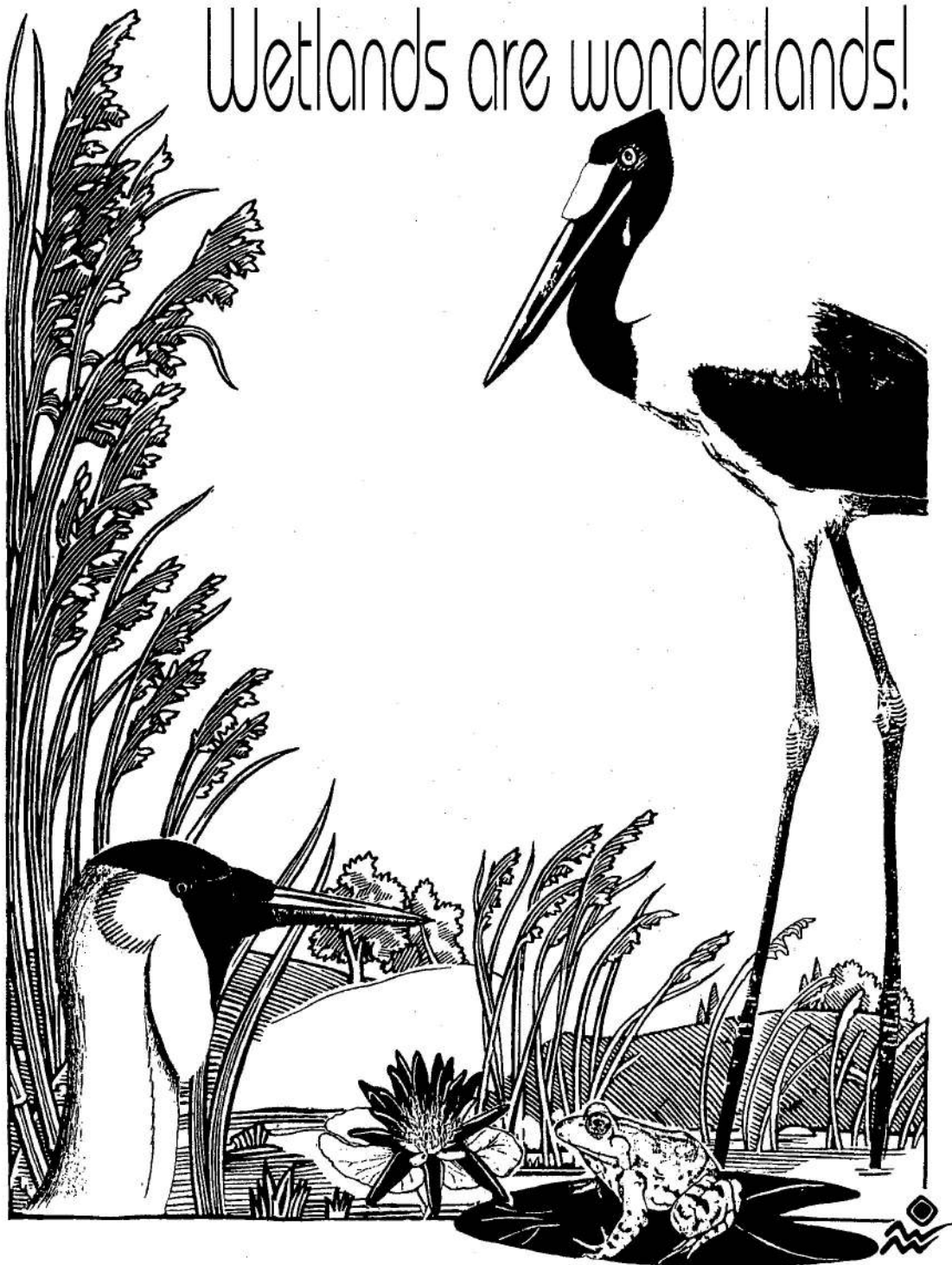
Posbus 397

0001 PRETORIA

Tel.: (012) 321-8931, Faks: (012) 325-5984

E-pos: infodesk@nlsa.ac.za

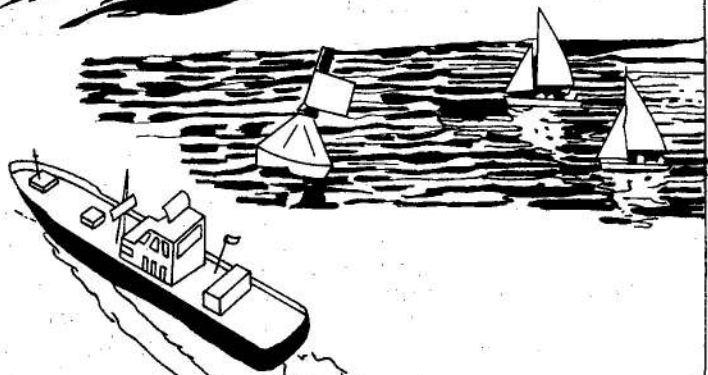
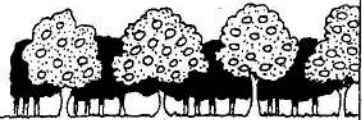
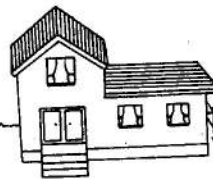
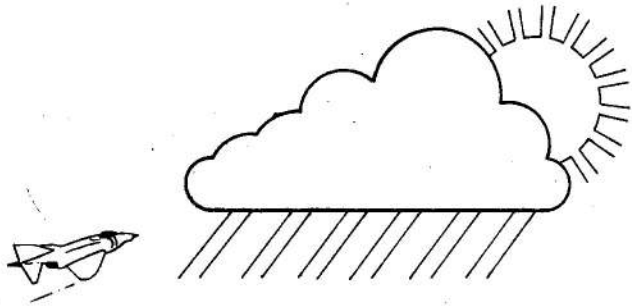
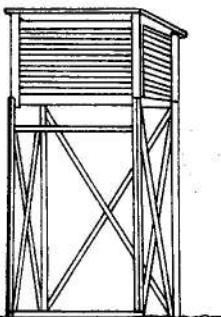
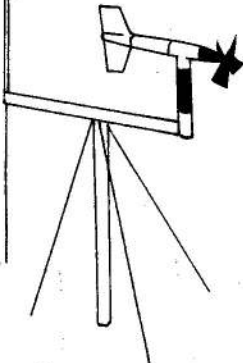
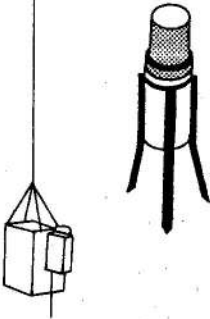
Wetlands are wonderlands!



Department of Environmental Affairs and Tourism

SA WEATHER BUREAU SA WEERBURU

WEATHER · SERVICES · WEERDIENSTE



Printed by and obtainable from the Government Printer, Bosman Street, Private Bag X85, Pretoria, 0001
Publications: Tel: (012) 334-4508, 334-4509, 334-4510
Advertisements: Tel: (012) 334-4673, 334-4674, 334-4504
Subscriptions: Tel: (012) 334-4735, 334-4736, 334-4737
Cape Town Branch: Tel: (021) 465-7531

Gedruk deur en verkrygbaar by die Staatsdrukker, Bosmanstraat, Privaatsak X85, Pretoria, 0001
Publikasies: Tel: (012) 334-4508, 334-4509, 334-4510
Advertensies: Tel: (012) 334-4673, 334-4674, 334-4504
Subskripsies: Tel: (012) 334-4735, 334-4736, 334-4737
Kaapstad-tak: Tel: (021) 465-7531