



Government Gazette Staatskoerant

REPUBLIC OF SOUTH AFRICA
REPUBLIEK VAN SUID-AFRIKA

Vol. 428

Pretoria, 16 February
Februarie 2001

No. 22062



AIDS HELPLINE: 0800-123-22 Prevention is the cure

CONTENTS**INHOUD**

No.		Page No.	Gazette No.	No.		Bladsy No.	Koerant No.
GOVERNMENT NOTICE				GOEWERMENTSKENNISGEWING			
Transport, Department of				Vervoer, Departement van			
<i>Government Notice</i>				<i>Goewermentskennisgewing</i>			
142	South African National Roads Agency Limited and National Roads Act (7/1998): South African National Roads Agency Ltd: Proclamation of National Route S27/1 between Villiers and Heidelberg	3	22062	142	Wet op die Suid-Afrikaanse Nasionale Padagentskap Beperk en Nasionale Paaie (7/1998): Suid-Afrikaanse Nasionale Padagentskap Bpk: Verklaring van Nasionale Roete S27/1 tussen Villiers en Heidelberg	4	22062

**GOVERNMENT NOTICE
GOEWERMENTSKENNISGEWING**

**DEPARTMENT OF TRANSPORT
DEPARTEMENT VAN VERVOER**

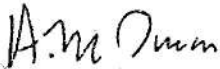
No. 142

16 February 2001

SOUTH AFRICAN NATIONAL ROADS AGENCY LTD

**PROCLAMATION OF A SPECIAL NATIONAL ROUTE – S27/1 BETWEEN
VILLIERS AND HEIDELBERG, PROVINCE OF MPUMALANGA**

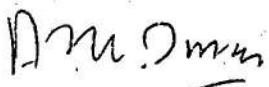
By virtue of the powers vested in me by section 40(1)(a) of The South African National Roads Agency Limited and National Roads Act, 1998 (Act 7 of 1998), I hereby declare that the route as indicated on the attached plans P438/99, which partially includes sections of provincial roads P27/1, P83 and P90/2 between Villiers and Heidelberg, shall be a National Road.



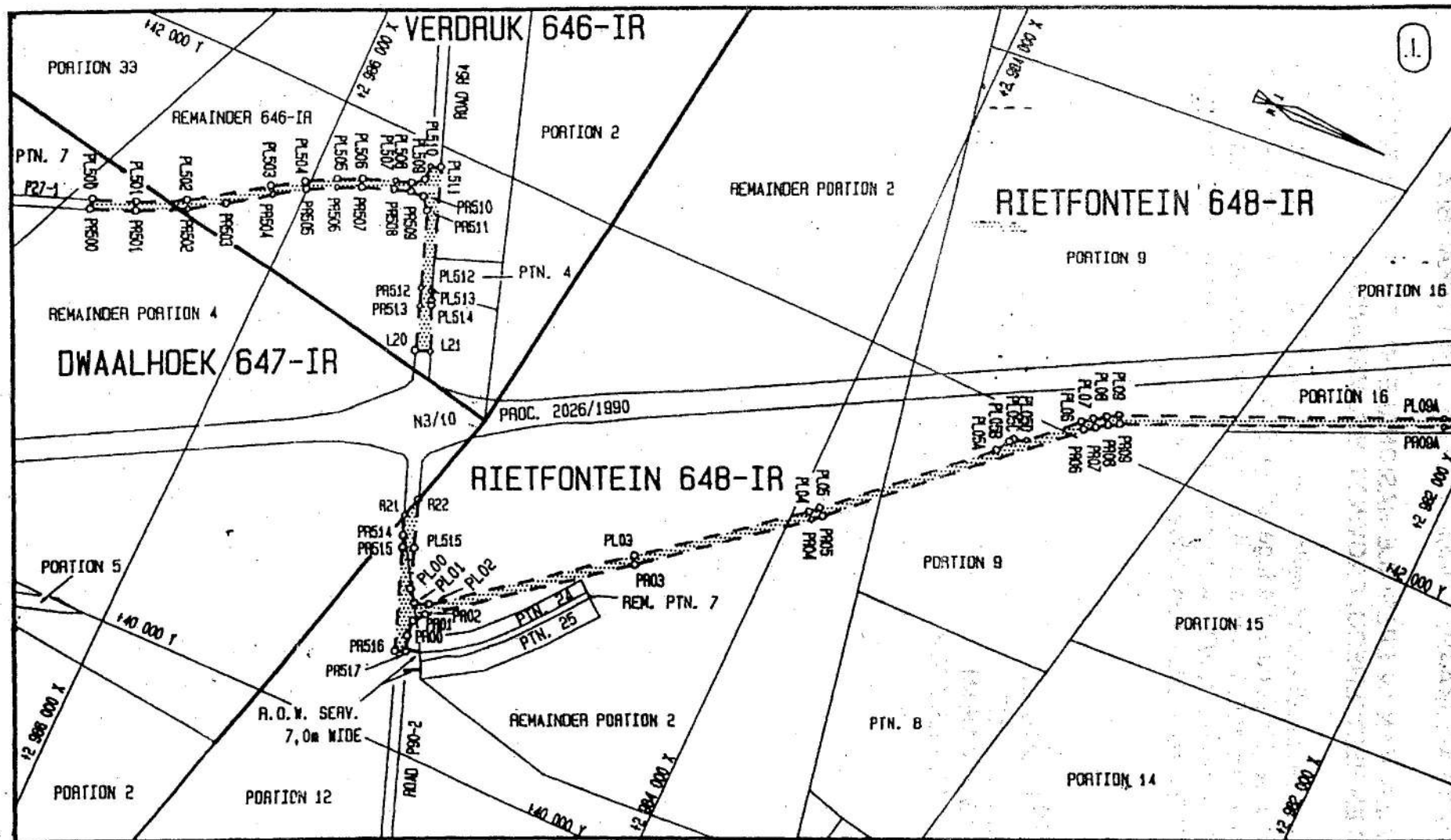
.....
**ABDULAH M OMAR MP
MINISTER OF TRANSPORT**

SUID-AFRIKAANSE NASIONALE PADAGENTSKAP BPK**VERKLARING VAN 'N SPESIALE NASIONALE ROETE – S27/1 TUSSEN VILLIERS EN HEIDELBERG, PROVINSIE MPUMALANGA**

Kragtens die bevoegdheid my verleen by artikel 40 (1)(a) van die Wet op Die Suid-Afrikaanse Nasionale Padagentskap Beperk en op Nasionale Paaie, 1998 (Wet 7 van 1998), verklaar ek hierby dat die roete soos getoon op die meegaande planne P438/99, wat gedeeltes van die provinsiale paaie P27/1, P83 en P90/2 tussen Villiers en Heidelberg insluit, 'n nasionale pad is.



.....
ABDULAH M OMAR MP
MINISTER VAN VERVOER



Suid Afrikaanse Nasionale Paaie Agentskap Bpk
South African National Roads Agency Ltd

Die figuur getoon
The figure shown



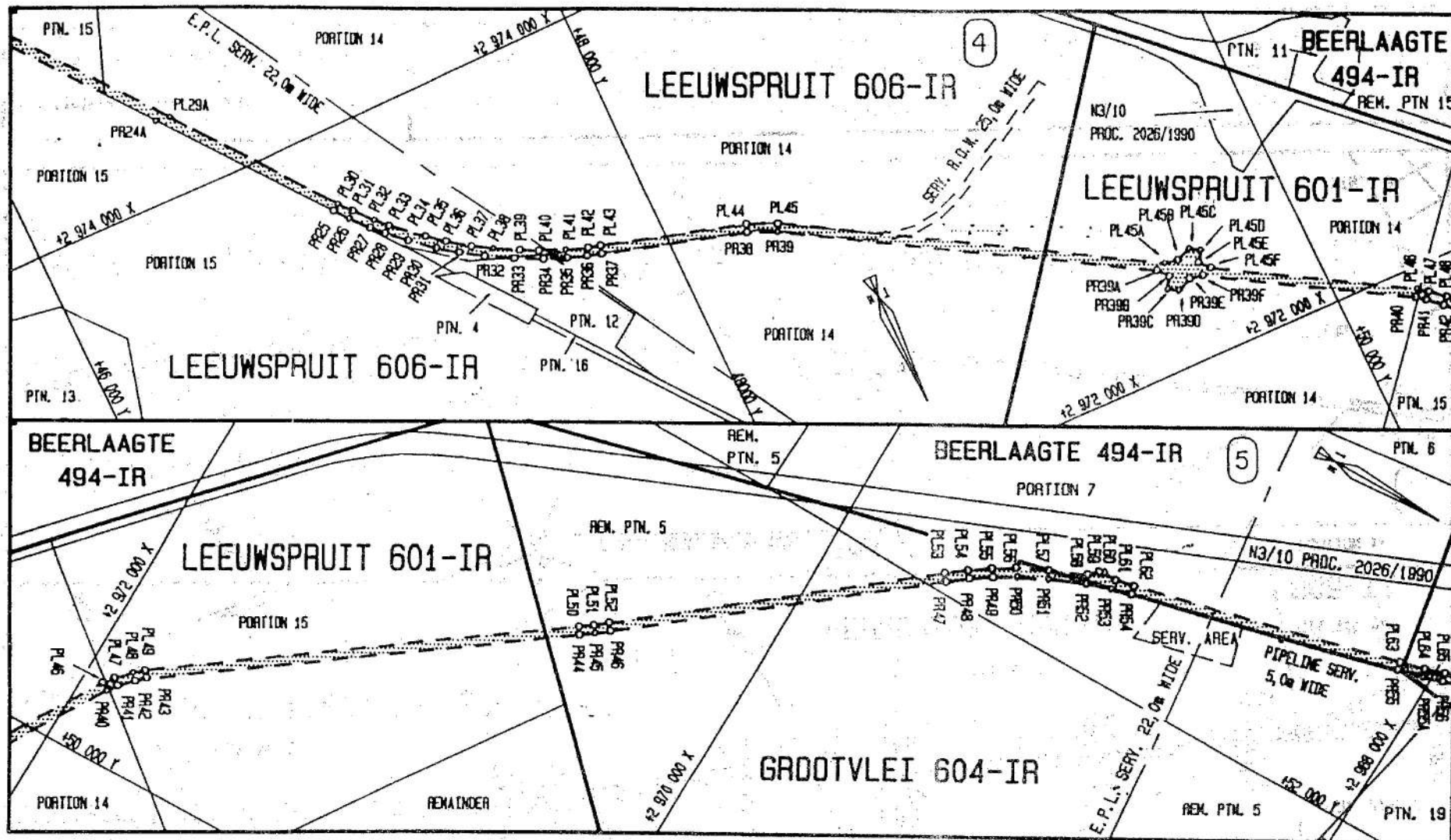
stel die padreserwe voor van 'n gedeelte
represents the road reserve of a portion
van Nasionale Roete
of National Route

S27

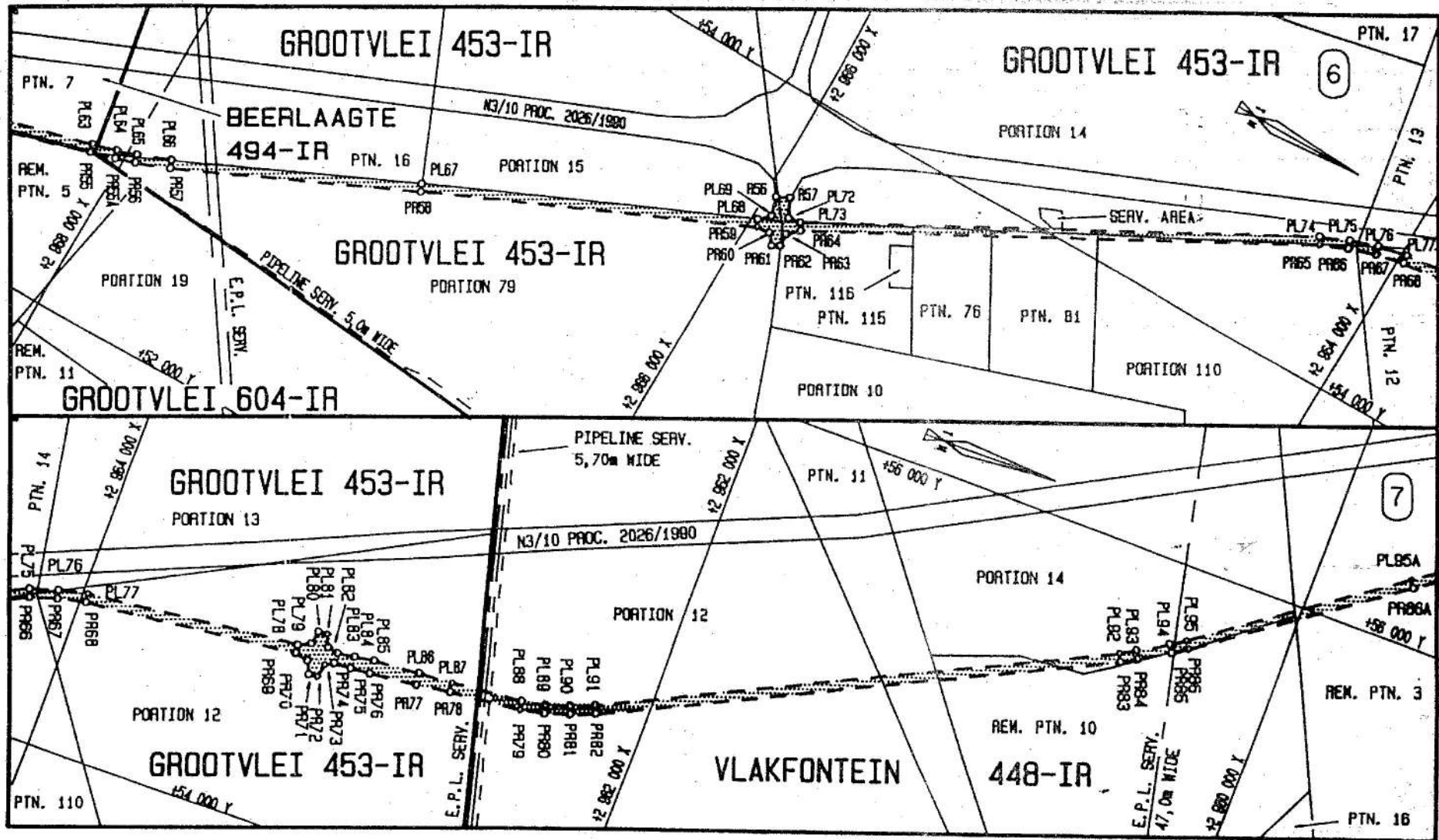
Sakele
Section


1

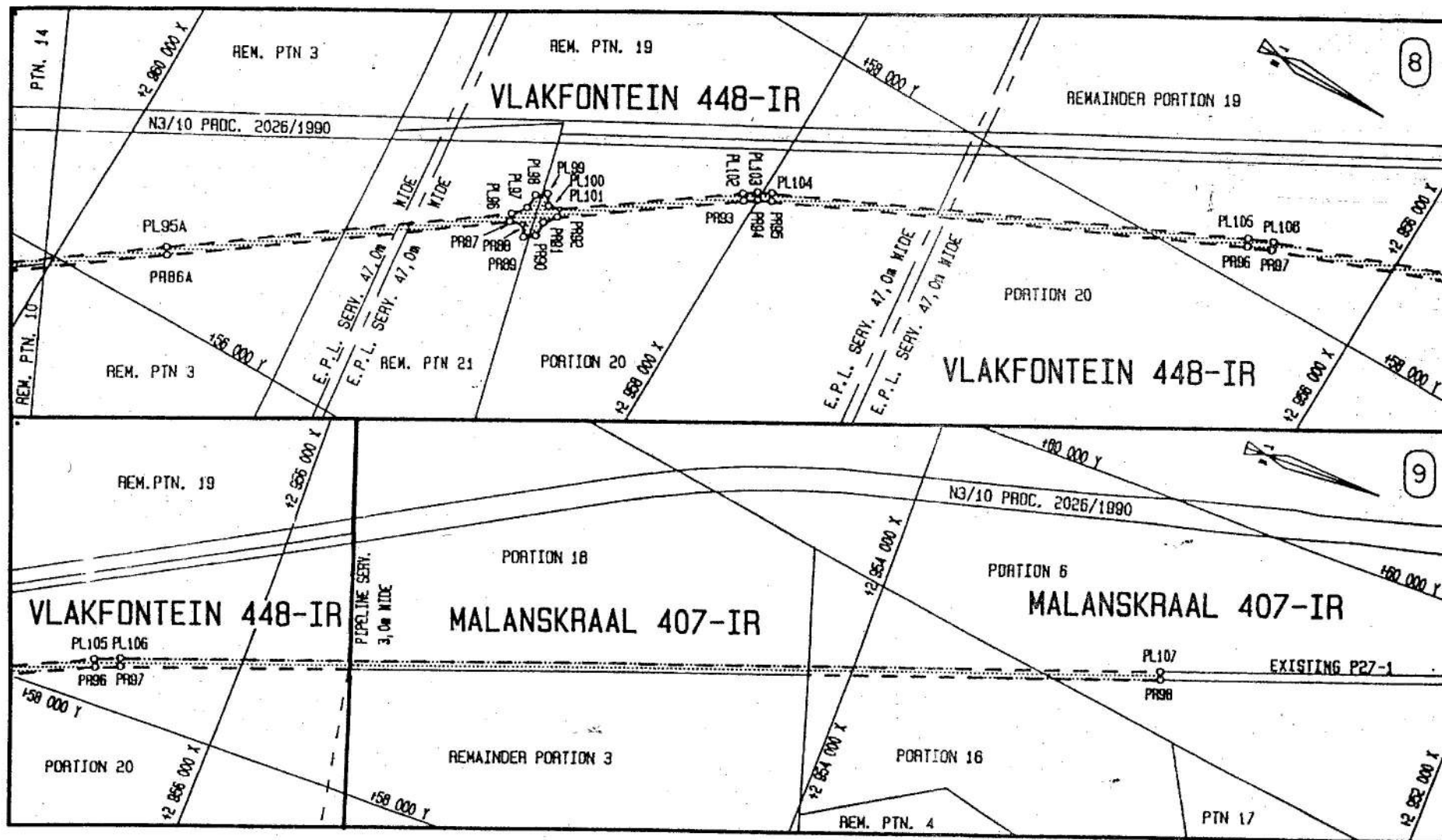
Vol
Sheet 1 van 9
P 438/99

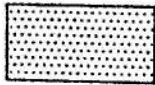


Suid Afrikaanse Nasionale Paaie Agentskap Bpk South African National Roads Agency Ltd	Die figuur getoon The figure shown	stel die padreserwe voor van 'n gedeelte represents the road reserve of a portion van Nasionale Route S27 of National Route S27 Seksie 1 Section 1	Vol 3 van 9 Sheet 3 of 9 P 438/99
--	---------------------------------------	---	---



<p>Suid Afrikaanse Nasionale Paaie Agentskap Bpk</p> <p>South African National Roads Agency Ltd</p>	<p>Die figuur getoon</p> <p>The figure shown</p> 	<p>stel die padreserwe voor van 'n gedeelte</p> <p>represents the road reserve of a portion</p> <p>van Nasionale Route</p> <p>of National Route</p> <p>S27</p> <p>Seksie</p> <p>Section</p> <p>1</p>	<p>Vol</p> <p>Sheet</p> <p>4</p> <p>van</p> <p>of</p> <p>9</p> <p>P</p> <p>438/99</p>
---	---	--	---



Suid Afrikaanse Nasionale Paaie Agentskap Bpk South African National Roads Agency Ltd	Die figuur getoon The figure shown 	stel die padreserwe voor van 'n gedeelte represents the road reserve of a portion van Nasionale Roete of National Route S27 Seksie Section 1	Val Sheet 5 van of 9 P 438/99
--	--	--	---

PADRESERWE KOÖRDINATE / ROAD RESERVE CO-ORDINATES

LINKERKANT / LEFT HAND SIDE				REGTERKANT / RIGHT HAND SIDE			
	Y	X	LO 29°		Y	X	
PL500	+ 41 335,47	+ 2 986 642,92		PR500	+ 41 304,39	+ 2 986 636,20	
PL501	+ 41 387,67	+ 2 986 506,95		PR501	+ 41 360,22	+ 2 986 494,83	
PL502	+ 41 466,37	+ 2 986 353,43		PR502	+ 41 440,51	+ 2 986 338,21	
PL503	+ 41 628,70	+ 2 986 115,17		PR503	+ 41 511,39	+ 2 986 228,80	
PL504	+ 41 695,34	+ 2 986 012,62		PR504	+ 41 604,22	+ 2 986 097,82	
PL505	+ 41 748,87	+ 2 985 914,38		PR505	+ 41 669,55	+ 2 985 997,30	
PL506	+ 41 786,54	+ 2 985 832,74		PR506	+ 41 721,50	+ 2 985 902,04	
PL507	+ 41 827,42	+ 2 985 725,68		PR507	+ 41 758,94	+ 2 985 820,98	
PL508	+ 41 845,37	+ 2 985 672,78		PR508	+ 41 799,01	+ 2 985 716,05	
PL509	+ 41 873,88	+ 2 985 635,41		PR509	+ 41 817,26	+ 2 985 662,25	
PL510	+ 41 920,86	+ 2 985 636,99		PR510	+ 41 817,66	+ 2 985 614,35	
PL511	+ 41 934,31	+ 2 985 601,23		PR511	+ 41 780,32	+ 2 985 584,34	
PL512	+ 41 522,50	+ 2 985 446,38		PR512	+ 41 516,50	+ 2 985 486,86	
PL513	+ 41 490,58	+ 2 985 433,89		PR513	+ 41 456,70	+ 2 985 464,37	
PL514	+ 41 474,07	+ 2 985 428,17		L20	+ 41 310,33	+ 2 985 413,73	
L21	+ 41 328,45	+ 2 985 366,07		R21	+ 40 766,71	+ 2 985 206,09	
R22	+ 40 841,24	+ 2 985 186,28		PR514	+ 40 703,06	+ 2 985 181,17	
PL515	+ 40 675,98	+ 2 985 127,61		PR515	+ 40 661,94	+ 2 985 165,07	
PL00	+ 40 544,83	+ 2 985 078,75		PR516	+ 40 327,75	+ 2 985 039,42	
PL01	+ 40 506,39	+ 2 985 048,19		PR517	+ 40 340,57	+ 2 985 003,96	
PL02	+ 40 522,93	+ 2 985 000,91		PR00	+ 40 393,14	+ 2 985 021,58	
PL03	+ 40 974,48	+ 2 984 423,23		PR01	+ 40 447,33	+ 2 985 025,93	
PL04	+ 41 369,30	+ 2 983 946,07		PR02	+ 40 487,85	+ 2 984 997,30	
PL05	+ 41 395,16	+ 2 983 917,16		PR03	+ 40 946,31	+ 2 984 410,22	
PL05A	+ 41 846,57	+ 2 983 450,17		PR04	+ 41 346,55	+ 2 983 926,50	
PL05B	+ 41 891,47	+ 2 983 425,30		PR05	+ 41 373,20	+ 2 983 896,71	
PL05C	+ 41 903,00	+ 2 983 413,38		PR06	+ 42 036,04	+ 2 983 211,00	
PL05D	+ 41 920,65	+ 2 983 373,54		PR07	+ 42 061,26	+ 2 983 180,14	
PL06	+ 42 058,47	+ 2 983 230,96		PR08	+ 42 085,70	+ 2 983 144,55	
PL07	+ 42 085,28	+ 2 983 198,15		PR09	+ 42 105,35	+ 2 983 109,88	
PL08	+ 42 111,17	+ 2 983 160,47		PR09A	+ 42 563,17	+ 2 982 109,68	
PL09	+ 42 132,09	+ 2 983 123,55		PR10	+ 43 071,28	+ 2 980 999,59	
PL09A	+ 42 589,91	+ 2 982 123,34		PR11	+ 43 086,13	+ 2 980 963,69	
PL10	+ 43 098,79	+ 2 981 011,57		PR12	+ 43 125,59	+ 2 980 857,17	
PL11	+ 43 114,07	+ 2 980 974,63		PR13	+ 43 137,71	+ 2 980 820,27	
PL12	+ 43 137,11	+ 2 980 912,44		PR14	+ 43 300,50	+ 2 980 252,96	

PADRESERWE KOÖRDINATE / ROAD RESERVE CO-ORDINATES

LINKERKANT / LEFT HAND SIDE				REGTERKANT / RIGHT HAND SIDE			
	Y	X	LO 29°		Y	X	
PL13	+ 43 153,92	+ 2 980 867,06		PR15	+ 43 320,50	+ 2 980 196,51	
PL14	+ 43 166,39	+ 2 980 829,09		PR16	+ 43 787,66	+ 2 979 095,59	
PL15	+ 43 329,09	+ 2 980 262,11		PR17	+ 43 808,10	+ 2 979 040,67	
PL16A	+ 43 348,47	+ 2 980 207,38		PR18	+ 43 958,74	+ 2 978 572,27	
PL16	+ 43 542,10	+ 2 979 751,08		PR19	+ 43 972,68	+ 2 978 534,83	
PL16B	+ 43 574,59	+ 2 979 711,25		PR19A	+ 44 207,81	+ 2 977 982,81	
PL16C	+ 43 580,70	+ 2 979 696,84		PR20	+ 44 744,07	+ 2 976 723,77	
PL16D	+ 43 583,37	+ 2 979 653,82		PR21	+ 44 815,50	+ 2 976 589,55	
PL17	+ 43 815,55	+ 2 979 106,68		PR22	+ 44 842,21	+ 2 976 544,00	
PL18	+ 43 836,45	+ 2 979 050,51		PR23	+ 44 921,48	+ 2 976 419,44	
PL19	+ 43 987,09	+ 2 978 582,11		PR24	+ 45 042,31	+ 2 976 249,68	
PL20	+ 44 000,55	+ 2 978 545,96		PR24A	+ 46 571,70	+ 2 974 272,06	
PL20A	+ 44 235,66	+ 2 977 993,94		PR25	+ 46 995,29	+ 2 973 724,34	
PL21	+ 44 770,86	+ 2 976 737,29		PR26	+ 47 032,94	+ 2 973 677,61	
PL22	+ 44 841,70	+ 2 976 604,19		PR27	+ 47 086,07	+ 2 973 617,56	
PL23	+ 44 867,81	+ 2 976 559,65		PR28	+ 47 124,55	+ 2 973 577,80	
PL24	+ 44 946,37	+ 2 976 436,20		PR29	+ 47 186,96	+ 2 973 518,86	
PL25	+ 45 066,40	+ 2 976 267,57		PR30	+ 47 266,18	+ 2 973 452,95	
PL26	+ 45 390,16	+ 2 975 848,92		PR31	+ 47 331,51	+ 2 973 405,58	
PL27	+ 45 428,92	+ 2 975 823,32		PR32	+ 47 404,56	+ 2 973 357,70	
PL28	+ 45 438,74	+ 2 975 810,63		PR33	+ 47 492,52	+ 2 973 307,75	
PL29	+ 45 455,20	+ 2 975 764,82		PR34	+ 47 584,60	+ 2 973 263,47	
PL29A	+ 46 617,54	+ 2 974 261,83		PR35	+ 47 661,77	+ 2 973 232,58	
PL30	+ 47 019,02	+ 2 973 742,69		PR36	+ 47 726,58	+ 2 973 209,92	
PL31	+ 47 056,69	+ 2 973 695,97		PR37	+ 47 777,50	+ 2 973 194,45	
PL32	+ 47 109,90	+ 2 973 635,99		PR38	+ 48 267,25	+ 2 973 054,52	
PL33	+ 47 148,49	+ 2 973 596,31		PR39	+ 48 361,53	+ 2 973 014,04	
PL34	+ 47 206,51	+ 2 973 542,03		PR39A	+ 49 486,95	+ 2 972 350,49	
PL35	+ 47 246,63	+ 2 973 507,53		PR39B	+ 49 518,09	+ 2 972 314,71	
PL36	+ 47 306,82	+ 2 973 460,16		PR39C	+ 49 493,58	+ 2 972 276,93	
PL37	+ 47 379,35	+ 2 973 409,18		PR39D	+ 49 528,03	+ 2 972 256,61	
PL38	+ 47 442,62	+ 2 973 370,05		PR39E	+ 49 580,38	+ 2 972 277,99	
PL39	+ 47 522,87	+ 2 973 326,29		PR39F	+ 49 626,41	+ 2 972 268,26	
PL40	+ 47 581,52	+ 2 973 297,97		PR40	+ 50 249,43	+ 2 971 900,92	
PL41	+ 47 667,94	+ 2 973 261,93		PR41	+ 50 281,45	+ 2 971 877,30	
PL42	+ 47 744,59	+ 2 973 235,67		PR42	+ 50 327,10	+ 2 971 835,79	
				Val 7 van 9 Sheet of			
				P438/99			

PADRESERWE KOÖRDINATE / ROAD RESERVE CO-ORDINATES

LINKERKANT / LEFT HAND SIDE			REGTERKANT / RIGHT HAND SIDE		
	Y	X	LO 29°	Y	X
PL43	+ 47 785,74	+ 2 973 223,30		PR43	+ 50 353,64 + 2 971 806,15
PL44	+ 48 277,33	+ 2 973 082,84		PR44	+ 51 241,51 + 2 970 582,06
PL45	+ 48 375,12	+ 2 973 040,85		PR45	+ 51 273,13 + 2 970 538,46
PL45A	+ 49 523,19	+ 2 972 363,95		PR46	+ 51 307,03 + 2 970 496,63
PL45B	+ 49 569,57	+ 2 972 354,01		PR47	+ 52 045,32 + 2 969 585,44
PL45C	+ 49 621,98	+ 2 972 375,35		PR48	+ 52 094,66 + 2 969 521,05
PL45D	+ 49 656,71	+ 2 972 355,02		PR49	+ 52 139,92 + 2 969 454,76
PL45E	+ 49 632,02	+ 2 972 317,19		PR50	+ 52 181,79 + 2 969 385,72
PL45F	+ 49 663,16	+ 2 972 281,41		PR51	+ 52 229,28 + 2 969 292,39
PL46	+ 50 266,00	+ 2 971 925,98		PR52	+ 52 281,82 + 2 969 172,40
PL47	+ 50 300,50	+ 2 971 900,53		PR53	+ 52 310,29 + 2 969 091,18
PL48	+ 50 348,42	+ 2 971 856,95		PR54	+ 52 329,71 + 2 969 020,50
PL49	+ 50 377,02	+ 2 971 825,01		PR55	+ 52 564,44 + 2 968 107,92
PL50	+ 51 265,79	+ 2 970 599,67		PR55A	+ 52 586,88 + 2 968 020,66
PL51	+ 51 296,94	+ 2 970 556,73		PR56	+ 52 608,54 + 2 967 952,84
PL52	+ 51 330,34	+ 2 970 515,51		PR57	+ 52 652,46 + 2 967 839,45
PL53	+ 52 068,63	+ 2 969 604,33		PR58	+ 53 018,14 + 2 967 041,92
PL54	+ 52 117,97	+ 2 969 539,94		PR59	+ 53 504,13 + 2 965 960,46
PL55	+ 52 163,37	+ 2 969 473,76		PR60	+ 53 508,67 + 2 965 913,74
PL56	+ 52 205,40	+ 2 969 404,85		PR61	+ 53 473,10 + 2 965 883,13
PL57	+ 52 256,08	+ 2 969 305,88		PR62	+ 53 486,42 + 2 965 856,16
PL58	+ 52 309,91	+ 2 969 182,94		PR63	+ 53 534,90 + 2 965 859,63
PL59	+ 52 339,13	+ 2 969 154,62		PR64	+ 53 571,65 + 2 965 823,02
PL60	+ 52 344,12	+ 2 969 139,35		PR65	+ 54 442,57 + 2 964 251,97
PL61	+ 52 344,12	+ 2 969 091,18		PR66	+ 54 482,08 + 2 964 160,63
PL62	+ 52 358,76	+ 2 969 027,97		PR67	+ 54 511,46 + 2 964 069,05
PL63	+ 52 593,49	+ 2 968 115,40		PR68	+ 54 532,45 + 2 963 971,77
PL64	+ 52 615,47	+ 2 968 029,78		PR69	+ 54 617,73 + 2 963 230,85
PL65	+ 52 636,85	+ 2 967 962,82		PR70	+ 54 607,97 + 2 963 184,46
PL66	+ 52 680,11	+ 2 967 851,13		PR71	+ 54 564,98 + 2 963 164,49
PL67	+ 53 045,46	+ 2 967 054,31		PR72	+ 54 568,41 + 2 963 134,69
PL68	+ 53 531,95	+ 2 965 971,74		PR73	+ 54 614,84 + 2 963 124,85
PL69	+ 53 564,31	+ 2 965 936,31		PR74	+ 54 629,35 + 2 963 094,84
R56	+ 53 635,03	+ 2 965 957,85		PR75	+ 54 634,70 + 2 963 035,28
R57	+ 53 656,87	+ 2 965 914,73		PR76	+ 54 640,88 + 2 962 966,50
PL72	+ 53 588,92	+ 2 965 881,54		PR77	+ 54 661,12 + 2 962 797,12

PADRESERVE KOÖRDINATE / ROAD RESERVE CO-ORDINATES**LINKERKANT / LEFT HAND SIDE****REGTERKANT / RIGHT HAND SIDE**

	Y	X	LO 29°		Y	X
PL73	+ 53 596,96	+ 2 965 839,24		PR78	+ 54 681,30	+ 2 962 678,65
PL74	+ 54 469,52	+ 2 964 265,23		PR79	+ 54 710,56	+ 2 962 424,46
PL75	+ 54 510,20	+ 2 964 171,19		PR80	+ 54 729,02	+ 2 962 336,77
PL76	+ 54 540,47	+ 2 964 076,81		PR81	+ 54 755,65	+ 2 962 250,79
PL77	+ 54 562,08	+ 2 963 976,66		PR82	+ 54 788,94	+ 2 962 167,48
PL78	+ 54 647,54	+ 2 963 234,23		PR83	+ 55 604,97	+ 2 960 520,28
PL79	+ 54 667,59	+ 2 963 191,22		PR84	+ 55 634,43	+ 2 960 466,64
PL80	+ 54 714,02	+ 2 963 181,39		PR85	+ 55 696,94	+ 2 960 363,47
PL81	+ 54 717,45	+ 2 963 151,58		PR86	+ 55 730,84	+ 2 960 312,51
PL82	+ 54 674,45	+ 2 963 131,61		PR86A	+ 56 201,82	+ 2 959 665,84
PL83	+ 54 667,31	+ 2 963 095,83		PR87	+ 56 909,75	+ 2 958 693,82
PL84	+ 54 676,23	+ 2 963 034,60		PR88	+ 56 922,62	+ 2 958 650,68
PL85	+ 54 687,65	+ 2 962 965,34		PR89	+ 56 885,40	+ 2 958 625,35
PL86	+ 54 703,34	+ 2 962 801,98		PR90	+ 56 910,67	+ 2 958 590,64
PL87	+ 54 711,10	+ 2 962 682,08		PR91	+ 56 966,85	+ 2 958 589,95
PL88	+ 54 740,20	+ 2 962 429,28		PR92	+ 57 007,69	+ 2 958 559,35
PL89	+ 54 758,09	+ 2 962 344,32		PR93	+ 57 391,71	+ 2 958 032,07
PL90	+ 54 783,96	+ 2 962 260,81		PR94	+ 57 417,72	+ 2 957 992,41
PL91	+ 54 816,36	+ 2 962 179,73		PR95	+ 57 439,74	+ 2 957 950,40
PL92	+ 55 631,56	+ 2 960 534,18		PR96	+ 58 132,22	+ 2 956 455,55
PL93	+ 55 660,42	+ 2 960 481,64		PR97	+ 58 164,47	+ 2 956 377,27
PL94	+ 55 722,27	+ 2 960 379,56		PR98	+ 59 393,33	+ 2 952 987,97
PL95	+ 55 755,47	+ 2 960 329,65				
PL95A	+ 56 226,45	+ 2 959 682,98				
PL96	+ 56 940,88	+ 2 958 702,03				
PL97	+ 56 984,88	+ 2 958 667,10				
PL98	+ 57 041,06	+ 2 958 666,40				
PL99	+ 57 066,33	+ 2 958 631,70				
PL100	+ 57 029,11	+ 2 958 606,37				
PL101	+ 57 038,81	+ 2 958 567,56				
PL102	+ 57 415,95	+ 2 958 049,73				
PL103	+ 57 443,58	+ 2 958 007,62				
PL104	+ 57 466,96	+ 2 957 963,01				
PL105	+ 58 159,44	+ 2 956 468,16				
PL106	+ 58 192,67	+ 2 956 387,49				
PL107	+ 59 421,53	+ 2 952 998,20				

*Looking for back copies and out of print issues of
the Government Gazette and Provincial Gazettes?*

The National Library of SA has them!

Let us make your day with the information you need ...

National Library of SA, Pretoria Division

PO Box 397

0001 PRETORIA

Tel.:(012) 321-8931, Fax: (012) 325-5984

E-mail: infodesk@nlsa.ac.za



*Soek u ou kopieë en uit druk uitgawes van die
Staatskoerant en Provinsiale Koerante?*

Die Nasionale Biblioteek van SA het hulle!

Met ons hoef u nie te sukkel om inligting te bekom nie ...

Nasionale Biblioteek van SA, Pretoria Divisie

Posbus 397

0001 PRETORIA

Tel.:(012) 321-8931, Faks: (012) 325-5984

E-pos: infodesk@nlsa.ac.za



Printed by and obtainable from the Government Printer, Bosman Street, Private Bag X85, Pretoria, 0001

Publications: Tel: (012) 334-4508, 334-4509, 334-4510

Advertisements: Tel: (012) 334-4673, 334-4674, 334-4504

Subscriptions: Tel: (012) 334-4735, 334-4736, 334-4737

Cape Town Branch: Tel: (021) 465-7531

Gedruk deur en verkrygbaar by die Staatsdrukker, Bosmanstraat, Privaatsak X85, Pretoria, 0001

Publikasies: Tel: (012) 334-4508, 334-4509, 334-4510

Advertensies: Tel: (012) 334-4673, 334-4674, 334-4504

Subskripsies: Tel: (012) 334-4735, 334-4736, 334-4737

Kaapstad-tak: Tel: (021) 465-7531