

THE PROVINCE OF MPUMALANGA
DIE PROVINSIE MPUMALANGA

**Provincial Gazette Extraordinary
Buitengewone Provinsiale Koerant**

(Registered as a newspaper) • (As 'n nuusblad geregistreer)

Vol. 15

NELSPRUIT, 23 **MAY**
MEI 2008

No. 1537

CONTENTS

<i>No.</i>	<i>Page No.</i>	<i>Gazette No.</i>
OFFICIAL NOTICE		
2	Roads Ordinance (22/1957): Deviation of a portion of Provincial Road P53-1 and closure of a section of District Road D356 on the farm Goedgevonden 10 IS, Emalahleni District	2 1537

OFFICIAL NOTICE

NOTICE 2 OF 2008

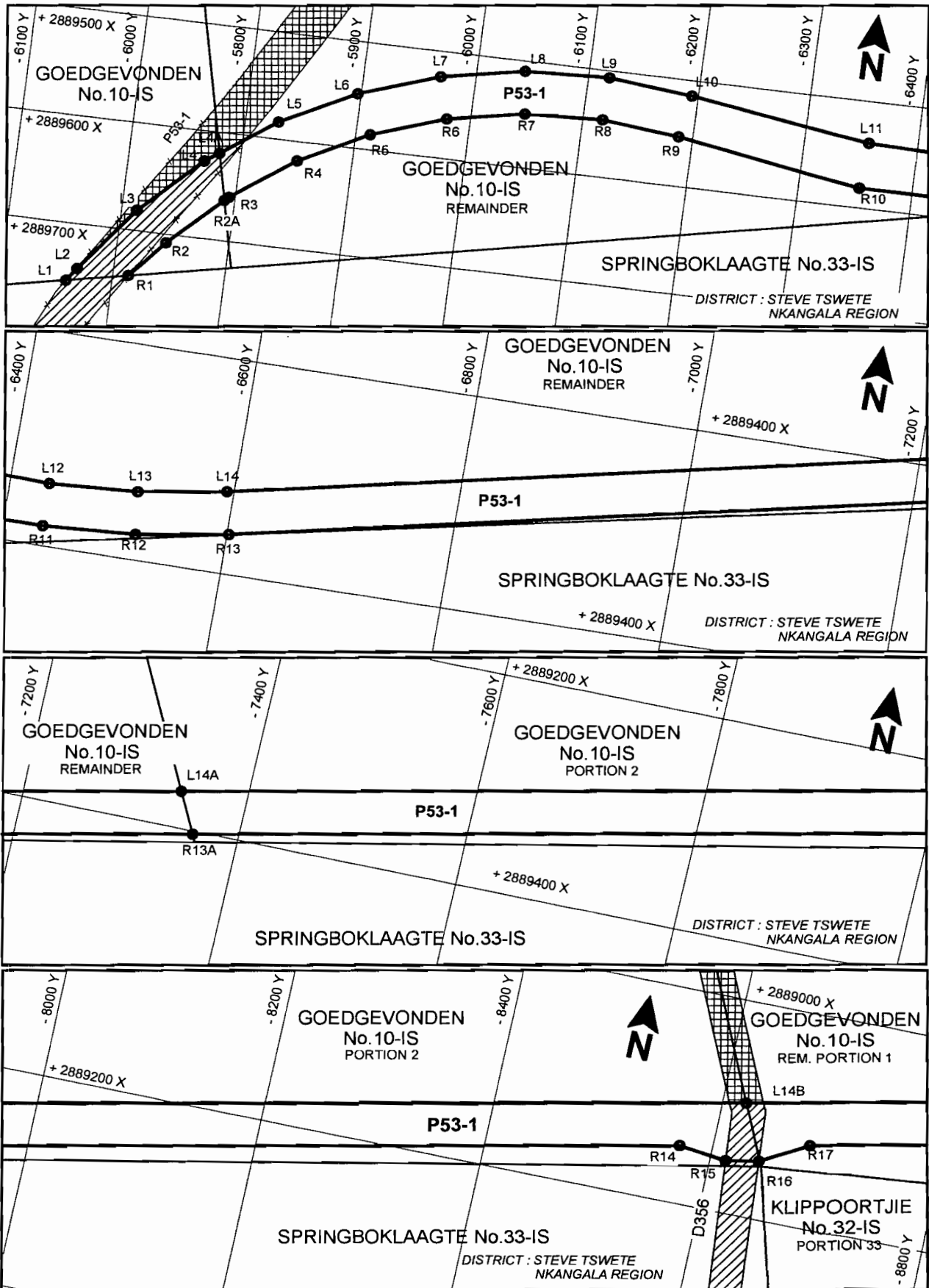
DEPARTMENT OF ROADS AND TRANSPORT MPUMALANGA PROVINCE

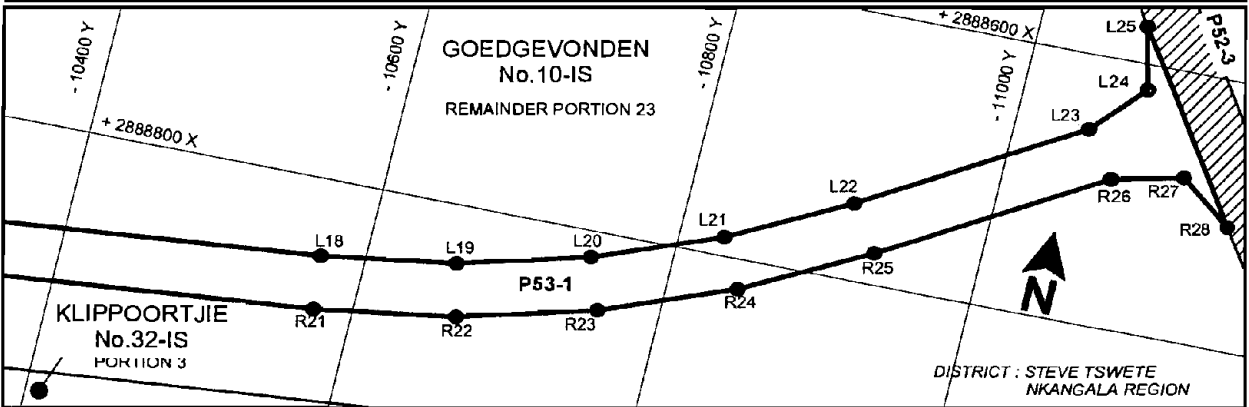
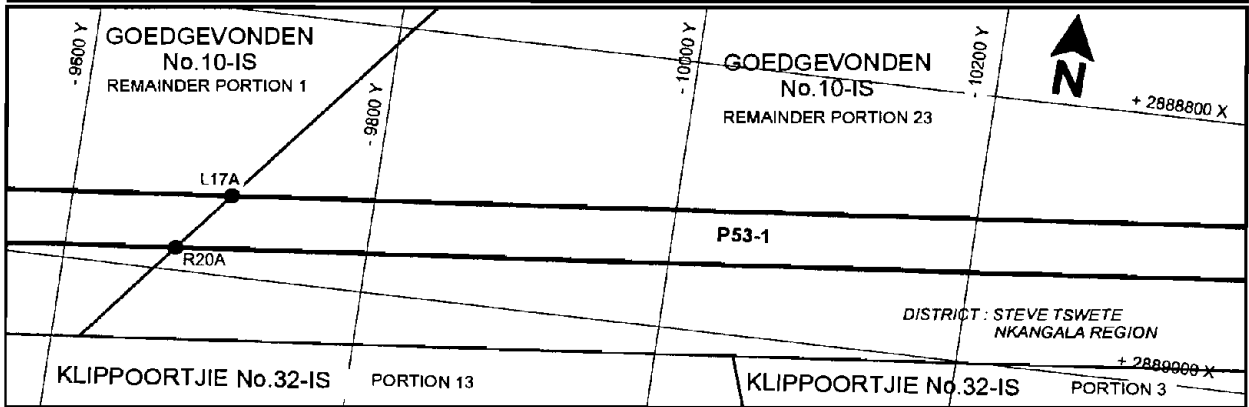
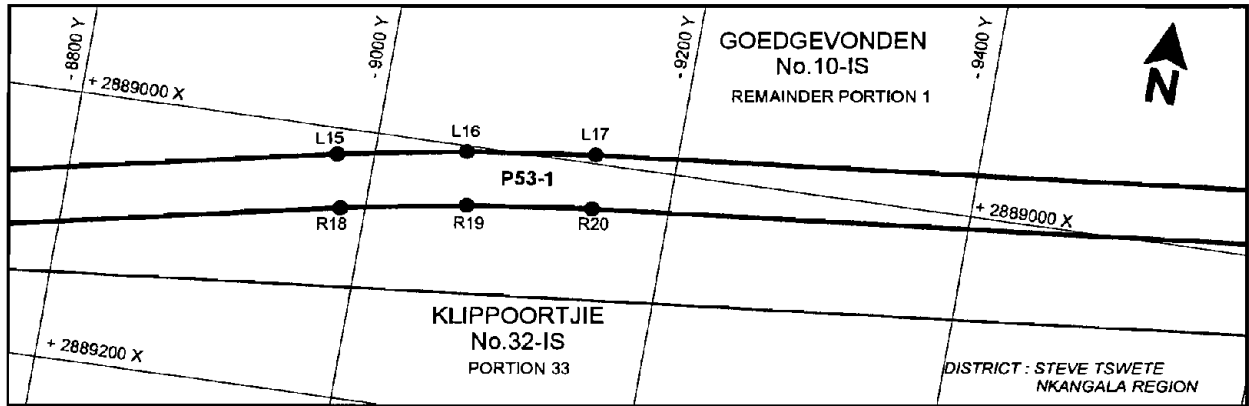
DEVIATION OF A PORTION OF PROVINCIAL ROAD P53-1 AND CLOSURE OF A SECTION OF DISTRICT ROAD D356 ON THE FARM GOEDGEVONDEN 10 – IS : EMALAHLENI DISTRICT

In terms of sections 3 and 5 of the Roads Ordinance, 1957 (Ordinance 22 of 1957), the Member of the Executive Council responsible for Roads and Transport : Mpumalanga, hereby increase and deviate a portion of Provincial Road P53-1 and close a section of District Road D356 over the farm Goedgevonden 10 – IS as indicated on the subjoined sketches which also indicates the general direction and situation of the said increase, deviation and closure.

In terms of section 5A(3) of the said Ordinance, it is hereby declared that the land taken up by the said road is physically demarcated and that plans MRS 06/06/01 – 06 Lyn indicating the land taken up by the said road, are available for inspection by any interested person, at the office of the Senior Manager : Design & Material, Chief Directorate : Roads, Riverside Provincial Government Building in Nelspruit.

APPROVAL : 18 March 2008
REFERENCE : F09/10/4/1/3 – P53-1





LEGEND

EXISTING ROAD ROAD CLOSED

THE FIGURE: L1-L25, R28-R1, L1 REPRESENTS A PORTION OF ROAD P53-1 AS INTENDED BY THE PUBLICATION OF THIS ADJUSTMENT AND DEPICTED IN DETAIL ON PLANS: MRS 08/06/01Lyn - MRS 08/06/06Lyn

* THESE COORDINATES LIE ON THE EXISTING PROPERTY BOUNDARIES AS DEFINED BY EXISTING FENCES

FILE No: F09/10/4/1/3 - P53-1
 APPROVED: 18/03/2008

COORDINATE LIST: L0 29 (WGS) Constants: Y=+0 X=+2 900 000

L1*	-5659.659	2889753.630	L14B	-8620.948	2889094.644	R1*	-5714.435	2889742.561	R15*	-8613.880	2889151.409
L2	-5628.204	2889805.548	L15	-8975.517	2889019.501	R2	-5701.808	2889761.529	R16*	-8642.932	2889145.551
L3	-5668.312	2889738.205	L16	-9060.124	2889004.182	R2A	-5790.658	2889662.512	R17	-8680.510	2889122.077
L4	-5719.962	2889677.710	L17	-9145.468	2888993.572	R3	-5748.635	2889705.601	R18	-8983.799	2889058.734
L4A	-5780.900	2889619.436	L17A	-9705.462	2888939.989	R4	-5803.247	2889657.243	R19	-9066.180	2889043.721
L5	-5779.032	2889625.405	L18	-10570.558	2888857.214	R5	-5864.432	2889617.529	R20	-9149.278	2889033.390
L6	-5845.211	2889582.449	L19	-10659.554	2888843.477	R6	-5930.834	2889587.337	R20A	-9673.390	2888983.241
L7	-5917.035	2889549.793	L20	-10746.373	2888819.574	R7	-6000.983	2889567.338	R21	-10574.368	2888897.032
L8	-5992.910	2889528.161	L21	-10829.858	2888785.824	R8	-6073.324	2889557.975	R22	-10667.927	2888882.590
L9	-6071.156	2889518.033	L22	-10908.898	2888742.676	R9	-6146.253	2889559.454	R23	-10759.199	2888857.462
L10	-6150.039	2889519.633	L23	-11048.854	2888655.430	R10	-6339.356	2889577.811	R24	-10846.966	2888821.991
L11	-6343.142	2889537.990	L24	-11078.967	2888618.981	R11	-6427.203	2889581.698	R25	-10930.059	2888776.621
L12	-6426.950	2889541.699	L25*	-11068.594	2888572.420	R12	-6514.994	2889576.698	R26	-11070.390	2888689.139
L13	-6510.704	2889536.929				R13	-6601.832	2889562.862	R27	-11116.664	2888677.906
L14	-6593.550	2889523.728				R13A	-7357.914	2889402.842	R28*	-11153.614	2888707.961
L14A	-7339.515	2889365.850				R14	-8571.089	2889146.082			