



THE PROVINCE OF MPUMALANGA  
DIE PROVINSIE MPUMALANGA

**Provincial Gazette Extraordinary  
Buitengewone Provinsiale Koerant**

*(Registered as a newspaper) • (As 'n nuusblad geregistreer)*

**Vol. 14**

NELSPRUIT, 14 DECEMBER  
DESEMBER 2007

**No. 1488**

---

**CONTENTS**

| <i>No.</i>                                    |  | <i>Page<br/>No.</i> | <i>Gazette<br/>No.</i> |
|---|--|---------------------|------------------------|
| <b>GENERAL NOTICE · ALGEMENE KENNISGEWING</b> |  |                     |                        |
| 674   | Local Government: Municipal Demarcation Act (27/1998): Municipal Demarcation Board: Withdrawal of the declaration of certain district management areas and re-determination of boundaries of certain municipalities..... | 3                   | 1488                   |
| 674   | Wet op Plaaslike Regering: Munisipale Afbakening (27/1998): Munisipale Afbakeningsraad: Verklaring van sekere distriksbestuurgebiede teruggetrek en grense van sekere munisipaliteite herafgebaken.....                  | 4                   | 1488                   |

---

## GENERAL NOTICE ALGEMENE KENNISGEWING

### NOTICE 674 OF 2007

#### MUNICIPAL DEMARCATION BOARD DISTRICT MANAGEMENT AREAS

#### NOTICE IN TERMS OF SECTION 21 OF THE LOCAL GOVERNMENT: MUNICIPAL DEMARCATION ACT, 1998, (ACT No. 27 OF 1998) READ WITH SECTION 6 OF THE LOCAL GOVERNMENT: MUNICIPAL STRUCTURES, 1998 (ACT No. 117 OF 1998) (Mpumalanga: MPDMA32)

In terms of section 21 of the Local Government: Municipal Demarcation Act, 1998 (Act No. 27 of 1998), read with section 6 of the Local Government: Municipal Structures Act, 1998 (Act No.17 of 1998), the Municipal Demarcation Board has withdrawn the declaration of certain district management areas, and has re-determined the boundaries of certain municipalities as reflected in the Schedule.

Members of the public are invited to submit written objections to:

The Municipal Demarcation Board  
Private Bag X 28  
HATFIELD  
0028

Fax: 012-3422480

E-mail: [robert@demarcation.org.za](mailto:robert@demarcation.org.za)

Written objections must reach the above office by no later than **28 February 2008**.

The relevant **DMA number and the Map number** must please be quoted in any correspondence with the Board.

Electronic maps of the re-determined municipal boundaries can be obtained by email from [anneliese@demarcation.org.za](mailto:anneliese@demarcation.org.za)

The maps, together with Circular 7/2007, can also be downloaded from the Board's web-site: [www.demarcation.org.za](http://www.demarcation.org.za)

**VUYO MLOKOTI**  
**CHAIRPERSON: MUNICIPAL DEMARCATION BOARD**

### SCHEDULE

| <b>DMA</b> | <b>Municipal boundaries re-determined:</b>  | <b>Map No:</b>                         |
|------------|---|--|
| MPDMA32    | Mbombela Local Municipality (MP322);<br>Nkomazi Local Municipality (MP324);<br>Bushbuckridge Local Municipality (MP325) | DC32_MP322<br>DC32_MP324<br>DC32_MP325 |

**KENNISGEWING 674 VAN 2007**

**MUNISIPALE AFBAKENINGSRAAD  
DISTRIKSBESTUURSGBIEDE  
KENNISGEWING INGEVOLGE ARTIKEL 21 VAN DIE WET OP  
PLAASLIKE REGERING: MUNISIPALE AFBAKENING, 1998 (WET NO. 27  
VAN 1998) SAAMGELEES MET ARTIKEL 6 VAN DIE WET OP PLAASLIKE  
REGERING: MUNISIPALE STRUKTURE, 1998 (WET NO. 117 VAN 1998)  
(Mpumalanga: MPDMA32)**

Ingevolge artikel 21 van die Wet op Plaaslike Regering: Munisipale Afbakening, 1998 (Wet No. 27 van 1998), saamgelees met artikel 6 van die Wet op Plaaslike Regering: Munisipale Strukture, 1998 (Wet No. 117 van 1998), het die Munisipale Afbakeningsraad die verklaring van sekere distriksbestuursgebiede teruggetrek, en die grense van sekere munisipaliteite herafgebaken soos gereflekteer in die Bylae.

Die publiek word hiermee uitgenooi om geskrewe besware te stuur aan:

Die Munisipale Afbakeningsraad  
Privaatsak X 28  
**HATFIELD**  
0028  
Faks: 012-3422480  
E-pos: [robert@demarcation.org.za](mailto:robert@demarcation.org.za)

Geskrewe besware moet die Raad voor of op **28 February 2008** bereik.

Verwys asseblief na die **DBG nommer en die Kaart nommer** in enige korrespondensie met die Raad.

Eletroniese kaarte van die herbepaalde munisipale grense kan per e-pos verkry word van [anneliese@demarcation.org.za](mailto:anneliese@demarcation.org.za)

Die kaarte, tesame met Omsendskrywe 7/2007, kan ook afgelaai word van die Raad se webwerf: [www.demarcation.org.za](http://www.demarcation.org.za)

**VUYO MLOKOTI**  
**VOORSITTER: MUNISIPALE AFBAKENINGSRAAD**

**BYLAE**

| <b>DBG</b> | <b>Munisipaliteite waarvan die grense herbepaal is:</b>   | <b>Kaart No:</b>                       |
|------------|---|--|
| MPDMA32    | Mbombela Plaaslike Munisipaliteit (MP322);<br>Nkomazi Plaaslike Munisipaliteit (MP324);<br>Bushbuckridge Plaaslike Munisiplaitiet (MP325) | DC32_MP322<br>DC32_MP324<br>DC32_MP325 |

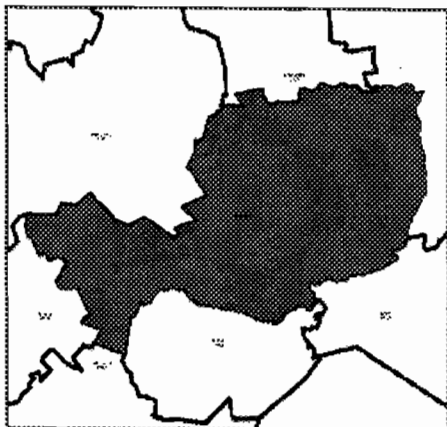
MAP NUMBER

DATE

DC32\_MP322

December 2007

OVERVIEW



Proposed inclusion of southern portion of MPDMA32 south west of the Skukuza into Mbombela Local Municipality (MP322)

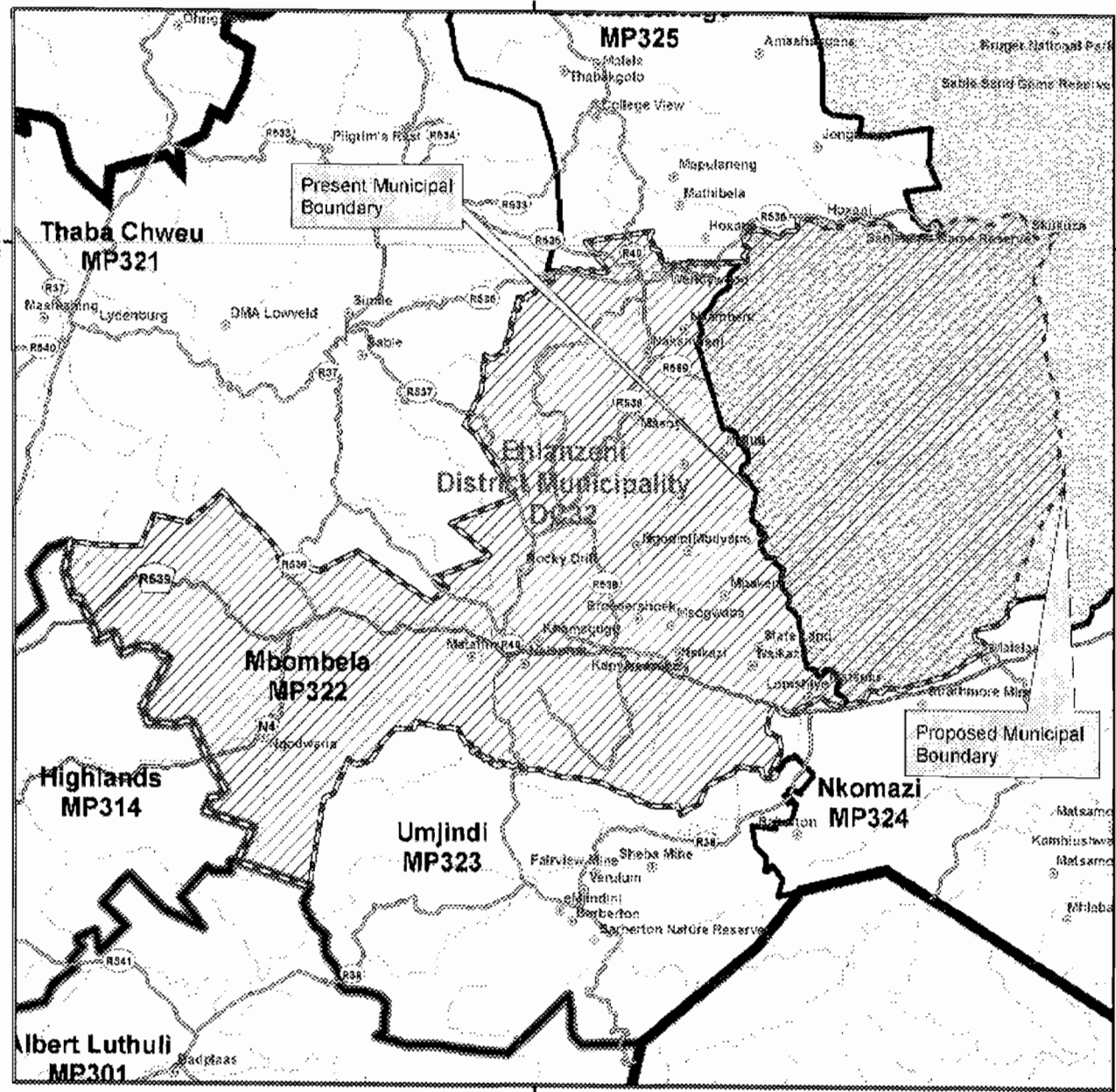
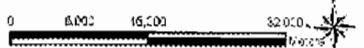
Legend

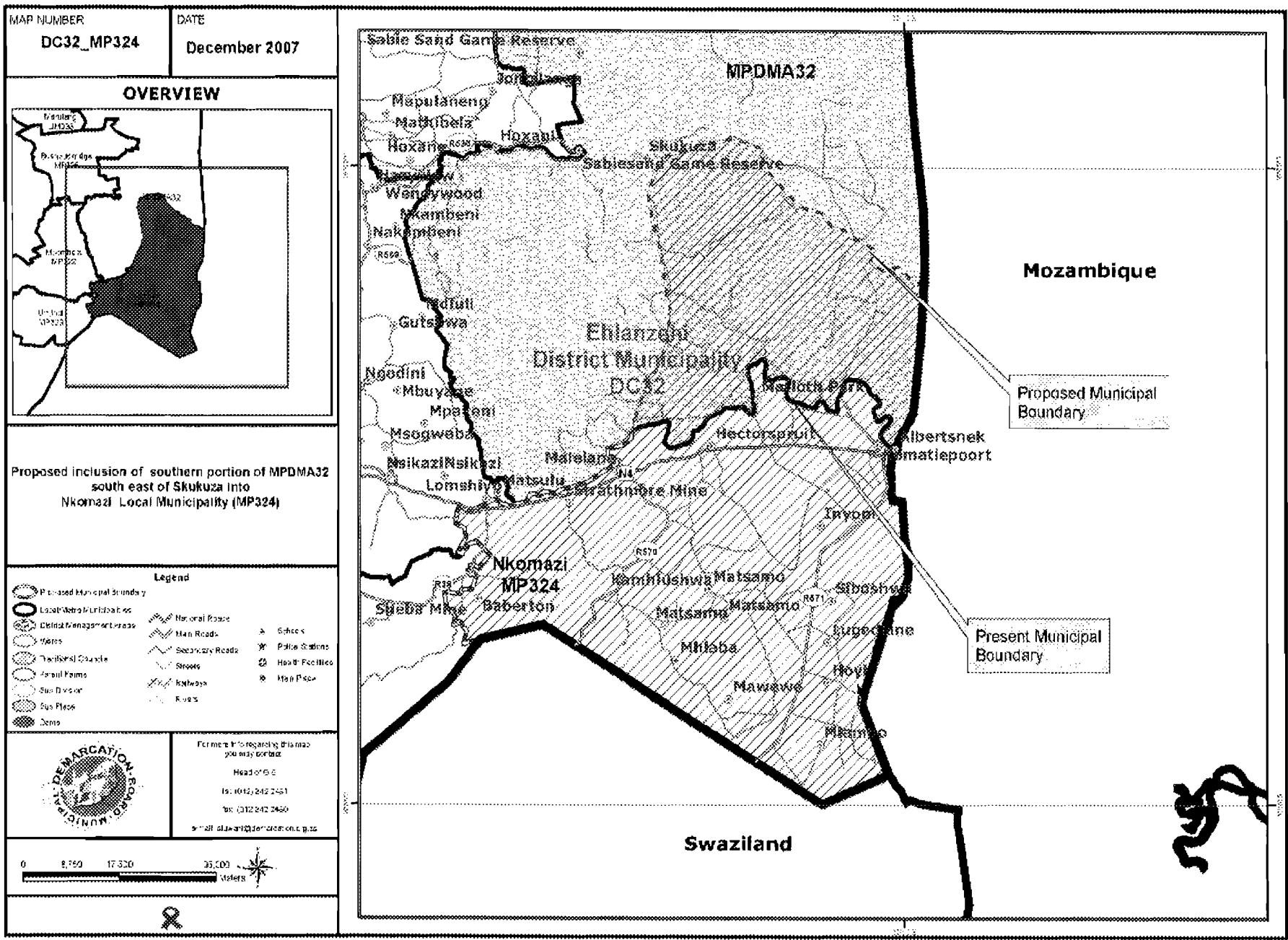
- Proposed Municipal Boundary
- Local-Municipal Boundaries
- District Management Areas
- R-Roads
- Main Roads
- Secondary Roads
- Streets
- Roads
- Natural Features
- Police Stations
- Health Facilities
- Main Place
- Schools
- Parks
- Mines



For more information on this map, you may contact:

Head of D-2  
 Tel: (012) 242 2451  
 Fax: (012) 242 2450  
 E-mail: [dlw@demarcation.com](mailto:dlw@demarcation.com)



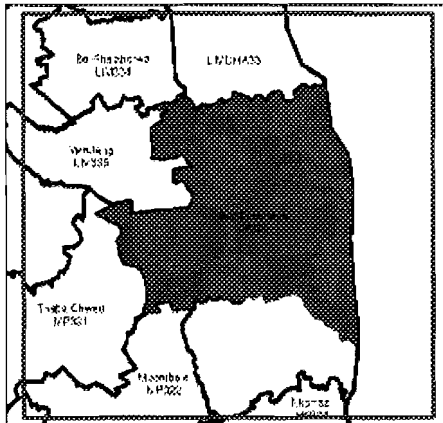


KES

MAP NUMBER  
**DC32\_MP325**

DATE  
**December 2007**

**OVERVIEW**



**Proposed inclusion of northern portion of MPDMA32 north of Sable river into Bushbuckridge Local Municipality (NIP325)**

- Legend**
- Proposed Municipal Boundary
  - Local Water Municipalities
  - District Management Areas
  - Water
  - Fencible Grazing
  - Fencible Farms
  - Eco-Drainage
  - Site Plans
  - Dams
  - National Roads
  - Main Roads
  - Secondary Roads
  - Streets
  - Railways
  - Roads
  - Schools
  - Police Stations
  - Health Facilities
  - Man Poles



For more information on the map you may contact:  
 A Local Demarcation  
 Tel: (012) 242 2451  
 Tel: (012) 242 2450  
 e-mail: [demarc@cap.gov.za](mailto:demarc@cap.gov.za)

